

Attachment-2: Historical Photographs and Documents

Figure 1: Detail from the Registered Plan of Guelph showing Lot 173 on Waterloo Street, presently 19 Fountain St. W and the surrounding neighbourhood. Source: Guelph Civic Museum

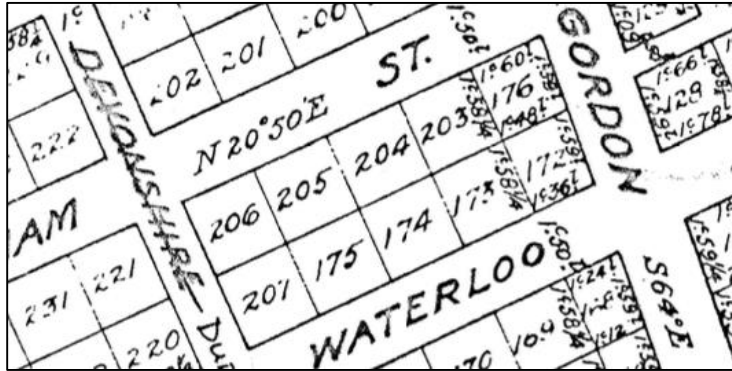


Figure 2: Detail from 1828-1829 Plan of Guelph. Source: Guelph Civic Museum



Figure 3: Detail from 1847 Map of Guelph showing Lot 173 on Waterloo Street, presently 19 Fountain Street West and the surrounding neighbourhood. Source: Guelph Civic Museum.

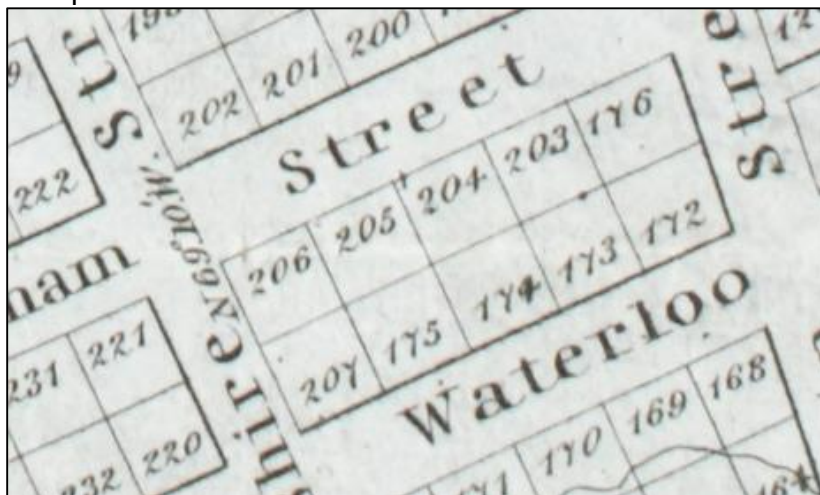


Figure 6: Detail from Cooper's 1862 Map showing Lot 173 on Waterloo Street, presently 19 Fountain Street West and the surrounding neighbourhood. Source: Guelph Civic Museum.



Figure 7: Detail from Cooper's 1875 Map showing Lot 173 on Waterloo Street, presently 19 Fountain Street West and the surrounding neighbourhood. Source: Guelph Civic Museum.



Figure 8: Detail Bird's Eye View 1872 Map showing Lot 173 on Waterloo Street, presently 19 Fountain Street West and the surrounding neighbourhood. Source: Guelph Civic Museum.

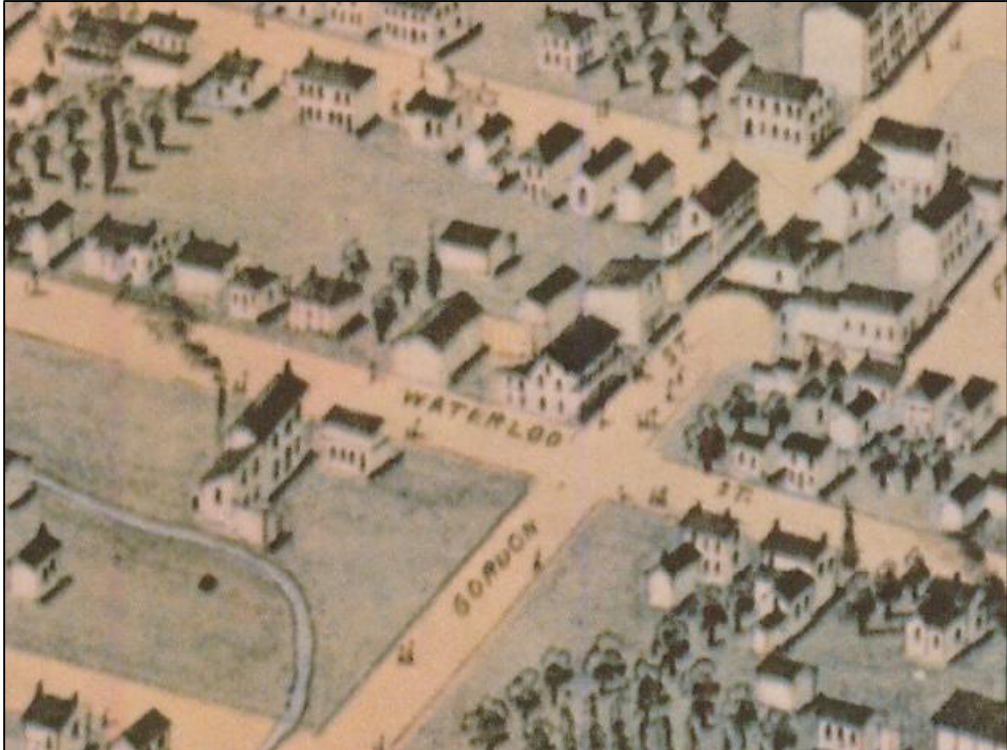


Figure 9: A selection of the 1877 Town of Guelph Map



Figure 10: Detail from County of Wellington Atlas 1906 Map showing Lot 173 on Waterloo Street, presently 19 Fountain Street West and the surrounding neighbourhood. Source: Guelph Civic Museum.



Figure 11: Detail from Fire Insurance Plan 1881 (revised 1892) showing 185 Waterloo Street, presently 19 Fountain Street West. Source: Guelph Civic Museum.

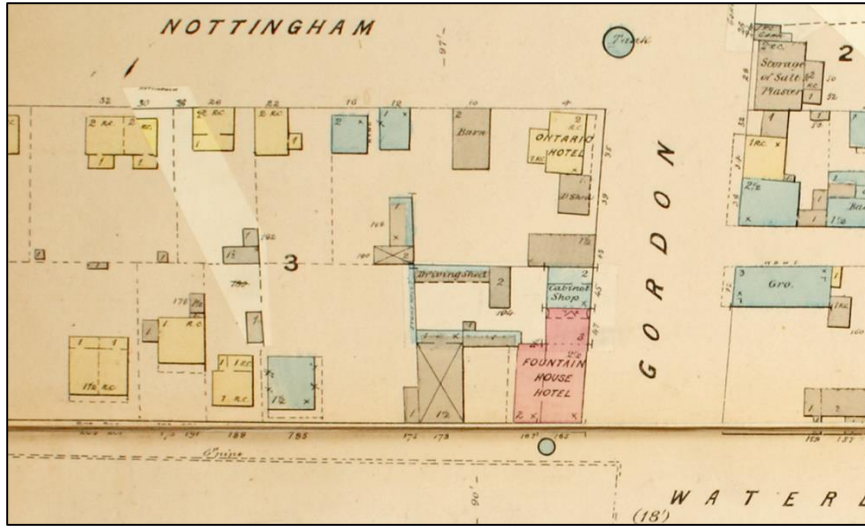


Figure 12: Detail from Fire Insurance Plan 1897 (revised 1907) showing 185 Waterloo (West) Street, presently 19 Fountain Street West (Guelph Civic Museum).

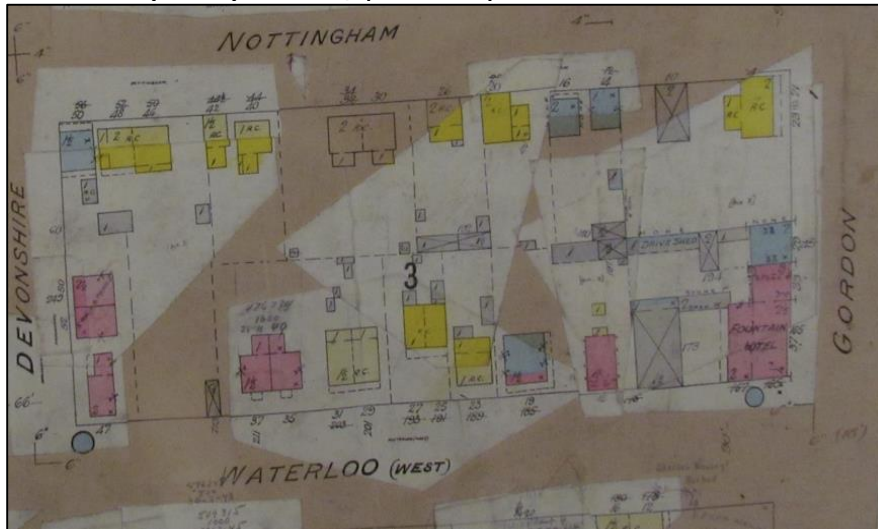


Figure 13: Detail from Fire Insurance Plan 1897 (revised 1911) showing 185 Waterloo (West) Street, presently 19 Fountain Street West. Source: Guelph Civic Museum.

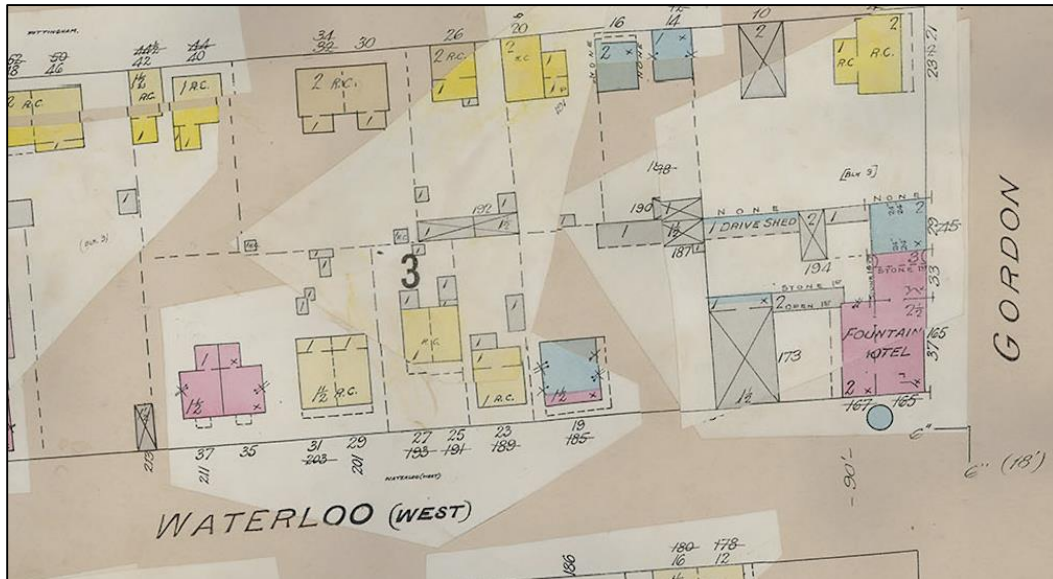


Figure 14: Detail from Fire Insurance Plan 1920 (revised 1926) showing 185 Waterloo (West) Street, presently 19 Fountain Street West. Source: Guelph Civic Museum.

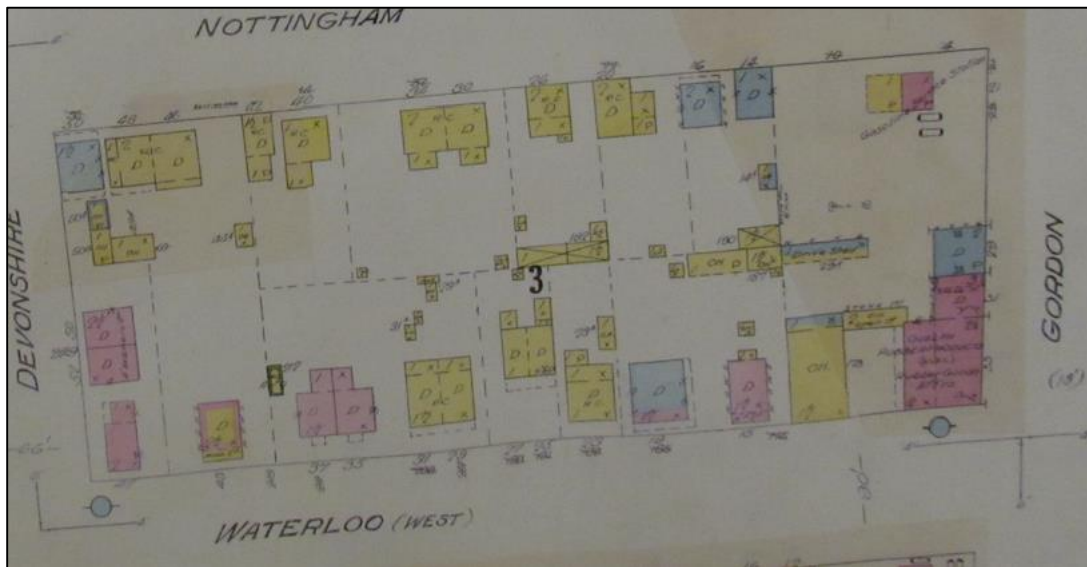


Figure 15: Detail from Fire Insurance Plan 1922 (revised 1929) showing 185 Waterloo (West) Street, presently 19 Fountain Street West Source: Guelph Civic Museum.

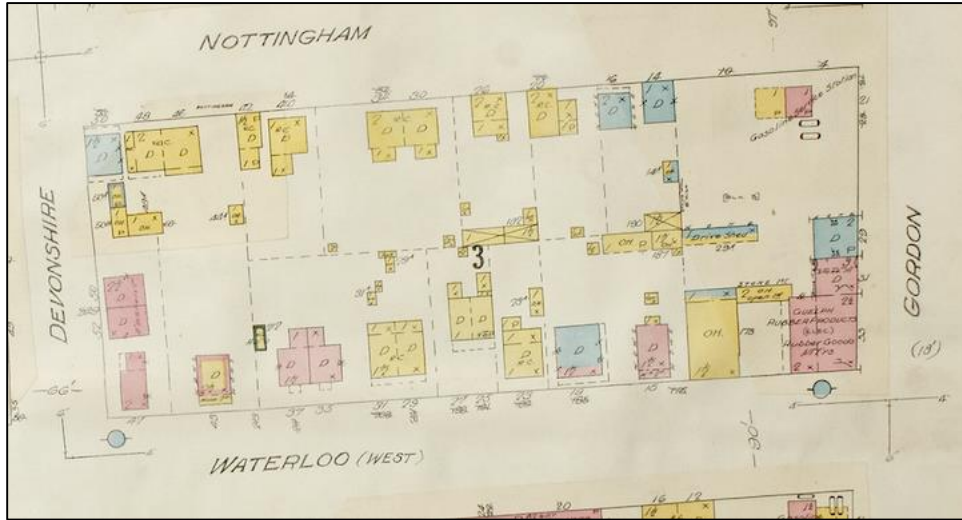


Figure 16: Detail from Fire Insurance Plan 1922 (revised 1946) showing 185 Waterloo (West) Street, presently 19 Fountain Street West. Source: Guelph Civic Museum.

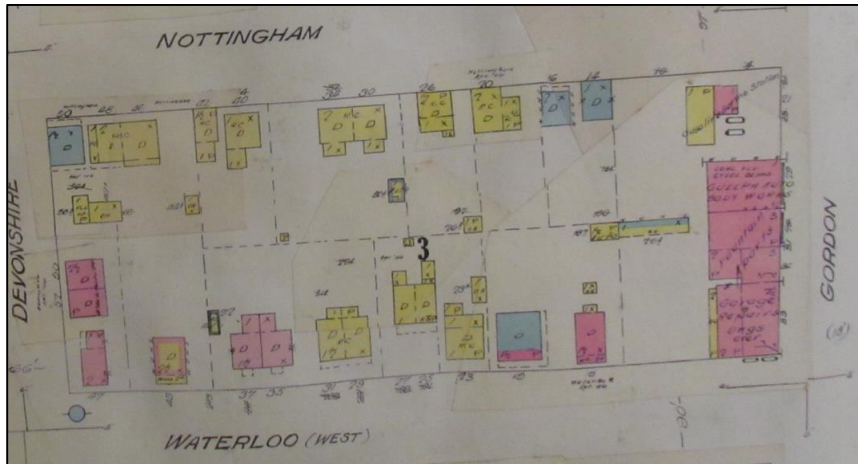


Figure 17: Detail from Fire Insurance Plan 1960 showing 185 Fountain Street West (Late Waterloo West), presently 19 Fountain Steet West. Source: Guelph Civic Museum.

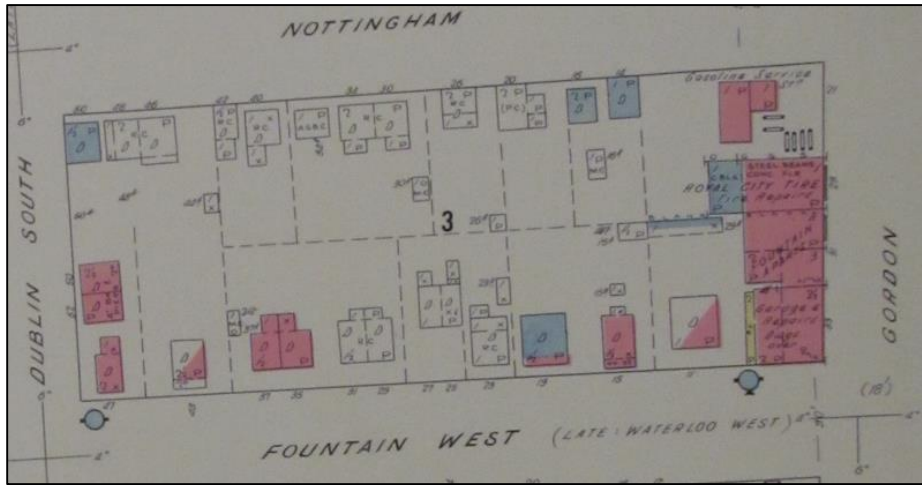


Figure 19: Obituary for William Dyson. Source: Guelph Daily Mercury, July 21st 1880.

DEATH OF AN OLD RESIDENT.—Mr. Wm. Dyson, one of the old settlers of Guelph, died at the home of the family, corner of Glasgow and Paisley streets, this Wednesday morning, at the age of 75 years. Mr. Dyson was a native of Yorkshire, England, and emigrated from his birthplace with his parents in 1833. He came to Guelph in that year and went into the carriage making business, in which he continued until 1841 when he built the first flouring mill in Guelph. This building occupied the site where the Victoria Mills now stand. In 1860 the mill was burned, after having come into possession of the present owner. For the last ten years Mr. Dyson has not been able to attend to business, his trouble being softening of the brain. Though his condition prevented him from moving about much for some time, he was not confined to his bed until last week. After that time he gradually sank until death relieved him of suffering. Deceased leaves a wife, and six children, who have grown up.

Figure 20: Guelph Evening Mercury, September 12, 1867, page 1.

Still another Fire.

It has come to be a saying among the people of the town that when there is one fire there will certainly be a second. Unfortunately events give cause for the superstition gaining ground as a truth.—Messrs. Armstrong & McCrae's factory took fire at four o'clock in the afternoon yesterday; at one o'clock this morning Dyson's waggon shop was wrapped in devouring flames. The building was a rough-cast one, erected on a stone foundation, and the alarm had scarcely been given when it was a huge pillar of billowy fire. The engine was on the ground but never worked, as it was thought working her would be "labour spent in vain." In the shop were nineteen buggies and waggons, finished and unfinished, all told; all were consumed, together with the workmen's tools. The total loss to Mr. Dyson will be over \$2,000, and there was not one penny of insurance on the building or on anything that was in it. No cause can be assigned for the sad event which has fallen so heavily on Mr. Dyson; as well as those in his employ. Incendiarism is suspected, but circumstances are not so strong as to warrant a total ignoring of accidental causes.

Figure 21: Page 43 of Marion and Eleanor Ryan's 1950-1979 Scrapbook, from the Guelph Civic Museum collections.

