

Advisory Committee of Council Staff Report



To Accessibility Advisory Committee
Date Tuesday, December 17, 2024
Subject **2024-25 Play Equipment Lifecycle Project:
Colonial Drive, Holland Crescent and Highview
Parks**

Recommendation

1. That the Accessibility Advisory Committee receive the information provided regarding the design options for the 2024-25 Play Equipment Lifecycle Project.
 2. That the Accessibility Advisory Committee share their recommendations regarding the proposed playground designs.
-

Executive Summary

Purpose of Report

To provide an overview of the 2024-25 Play Equipment Lifecycle Project, including identifying the parks to be included, the existing conditions of each park, and the accessible and inclusive improvements that have been designed for each park.

Key Findings

Several accessible and inclusive improvements to the play equipment and play spaces have been designed for Highview Park, Holland Crescent Park and Colonial Park.

Strategic Plan Alignment

This project will align with the Strategic Plan objective to grow and care for our community space and places. We will focus specifically on the initiative of attracting more people to our parks and programs by making them easier to access and enjoy.

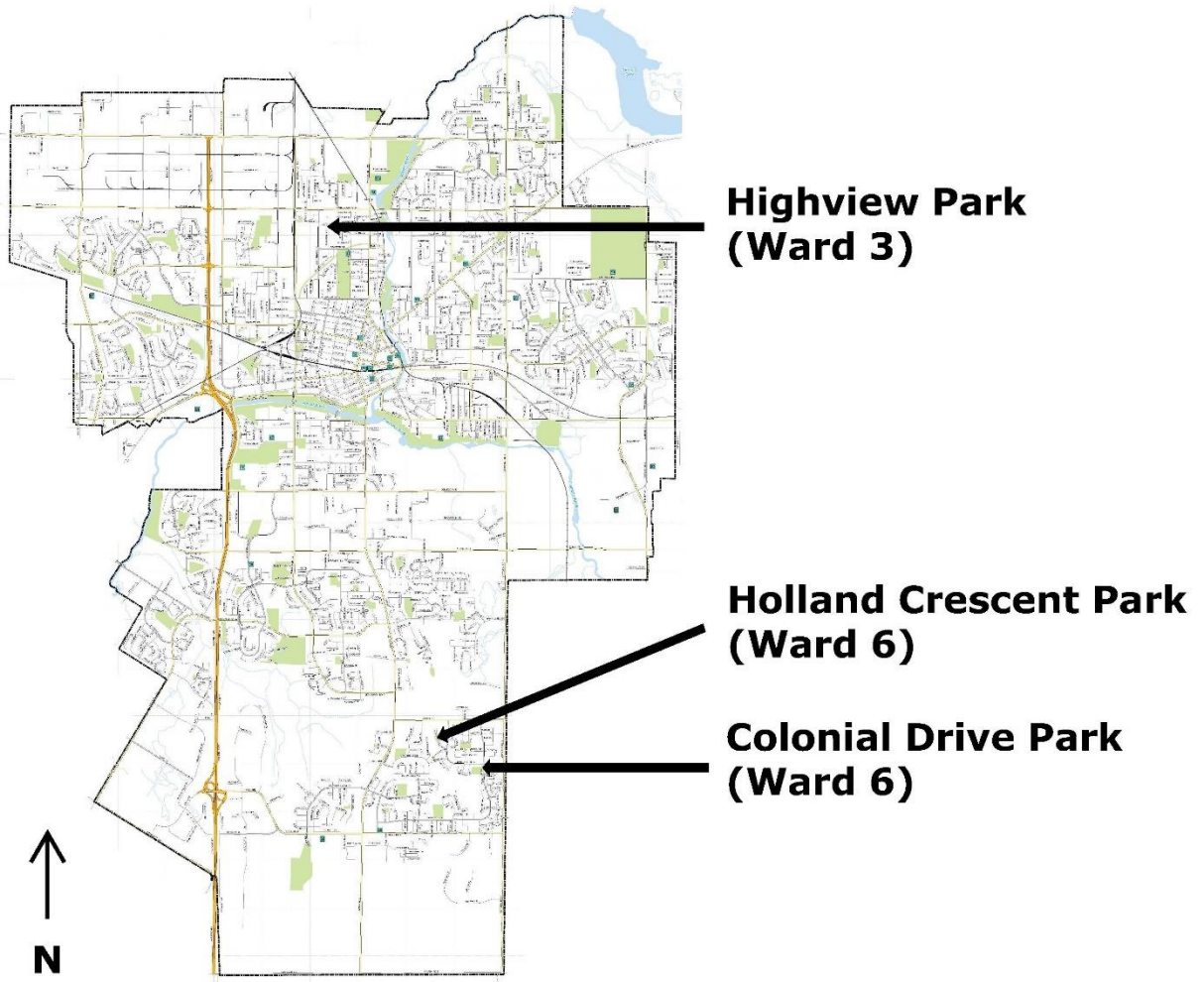
Financial Implications

The budget for this project is being funded from the playground replacement capital project account PK0130.

Report

The 2024-25 cycle for play equipment replacement will Highview Park, Holland Crescent Park and Colonial Park. The map below locates the 3 parks within the City.

Figure 1: Park context map



Below are images showing the existing conditions for each park.

Figure 2: Highview Park existing conditions



Figure 3: Holland Crescent Park existing conditions



Figure 4: Colonial Drive Park existing conditions



This project aims to develop play equipment and play spaces for each of these parks, that comply with the following:

1. Canadian Standards Association (CSA)
2. CAN/CSA Z614:21 Children's Play Spaces and Equipment
3. CAN/CSA Annex H Accessibility
4. American Society for Testing Materials (ASTM)
5. Accessibility for Ontarians with Disabilities Act (AODA)
6. The City of Guelph's Facility Accessibility Design Manual (FADM), section 4.5.2.
7. Children's Play Spaces and Equipment: A National Standard of Canada
8. The Rick Hansen Foundation's Let's Play: Creating Accessible Play Spaces
9. Holland Bloorview Kids Rehabilitation Hospital, Creating Inclusive Playgrounds: A Playbook of Considerations and Strategies

This project focuses on the guiding principles from [Creating Inclusive Playgrounds: A Playbook of Considerations and Strategies](#), to enhance accessibility and inclusion. It addresses three key questions:

1. Can I get there?
2. Can I play?
3. Can I stay?

Below are details and images of the accessible and inclusive improvements designed for each park. These improvements address the three key questions. Two design concepts for each park have been developed to gather feedback on preferred elements and arrangements before finalizing the designs.

Colonial Drive Park

Concept 1 includes:

- An asphalt pathway connecting the municipal sidewalk to the play space, providing an accessible route.
- A concrete ramp providing access into the play space.
- Engineered wood fibre (EWF) providing access within the play space.
- Playground equipment which includes:
 - An accessible swing
 - A transfer station and an accessible route within the main play structure, providing access to all raised decks.
 - Various sensory and game panels are within the main structure and along the edge of the play area.
 - A large multi-user accessible spinner.
 - Accessible overhead rings.
 - Quiet play areas within and surrounding the main play structure.
- Benches along the accessible route that are comfortable and meet FADM standards.
- Deciduous trees providing shade for benches at different times of the day.

Figure 5: Colonial Drive Park Concept Plan 1

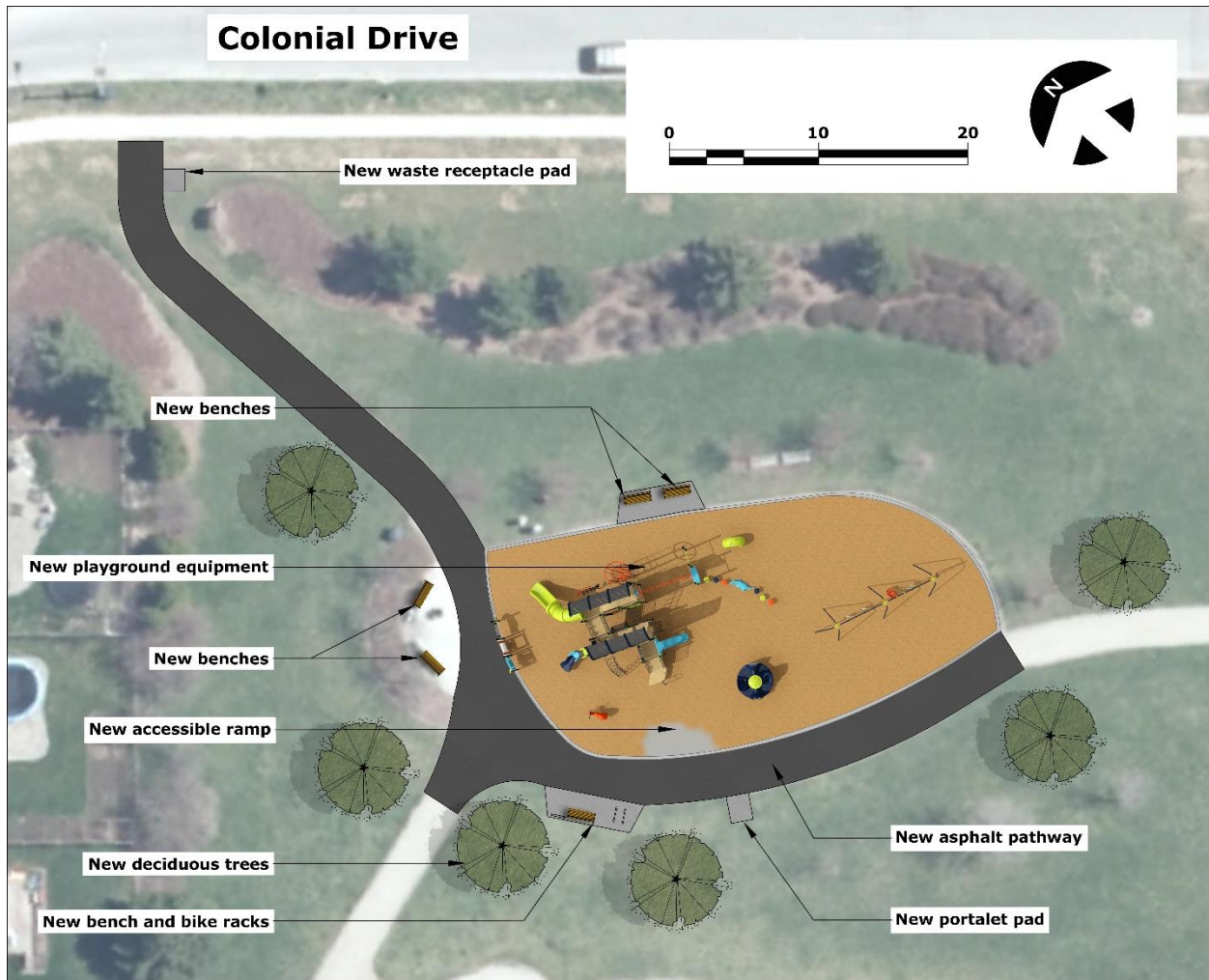
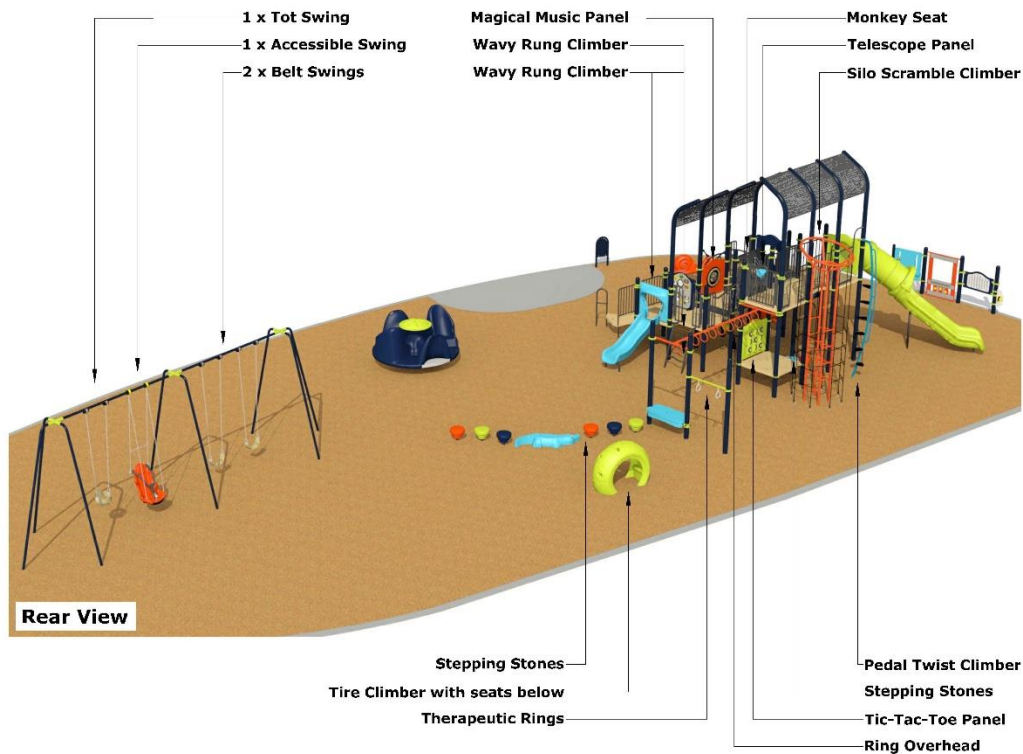


Figure 6: Colonial Drive Park Playground Concept 1 Front View



Figure 7: Colonial Drive Park Playground Concept 1 Rear View



Concept 2 includes:

- An asphalt pathway connecting the municipal sidewalk to the play space, providing an accessible route.
- A concrete ramp providing access into the play space.
- Engineered wood fibre (EWF) providing access within the play space.
- Playground equipment which includes:
 - An accessible swing
 - A transfer station, an accessible ramp and an accessible route within the main play structure, providing access to many of the raised decks.
 - Various sensory and game panels are within the main structure and surrounding the edge of the play area.
 - A single-user accessible spinner.
 - Accessible overhead features.
 - Quiet play areas within the main play structure.
- Benches along the accessible route that are comfortable and meet FADM standards.
- Deciduous trees providing shade for benches at different times of the day.

Figure 8: Colonial Drive Park Concept Plan 2

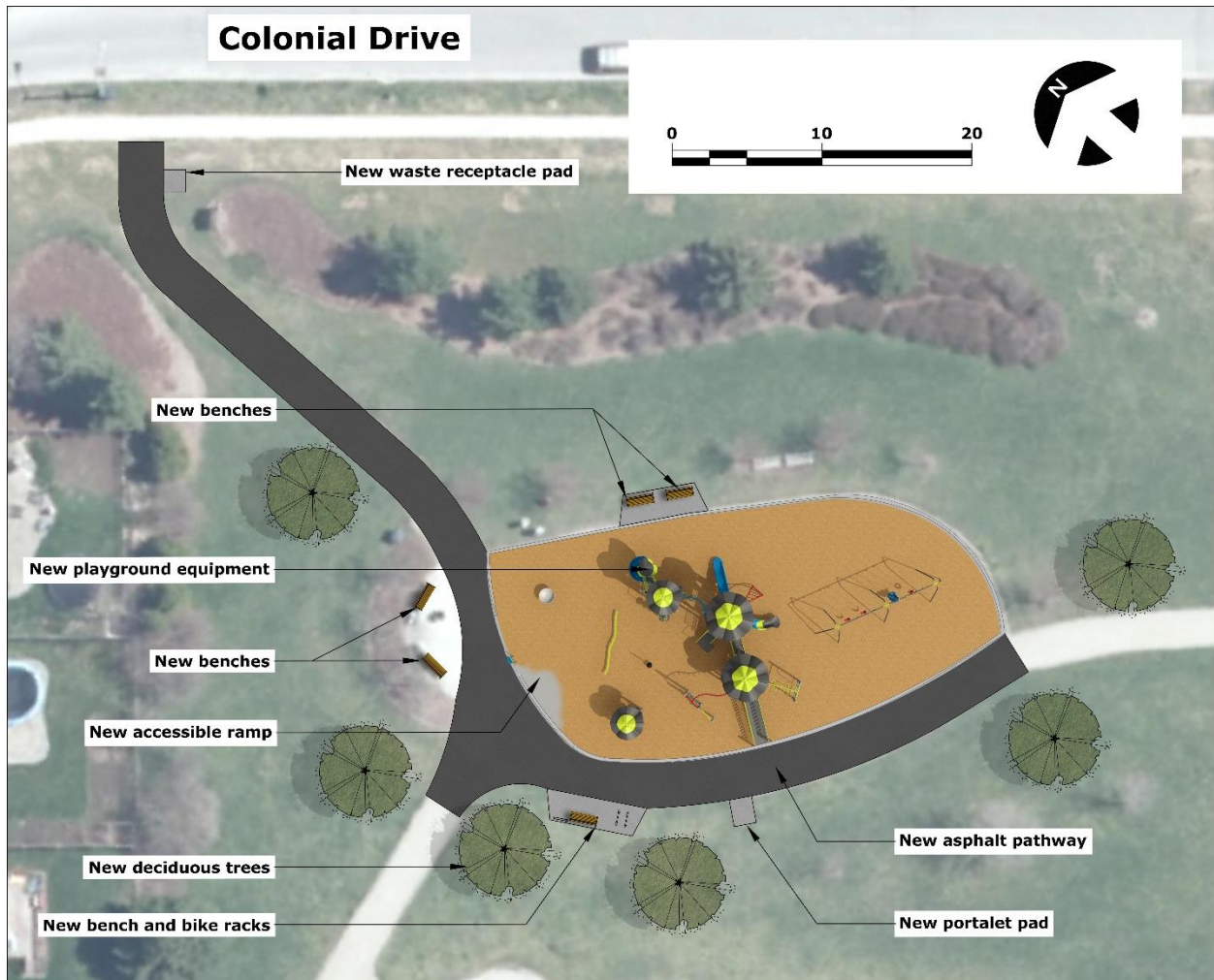


Figure 9: Colonial Drive Park Playground Concept 2 Front View

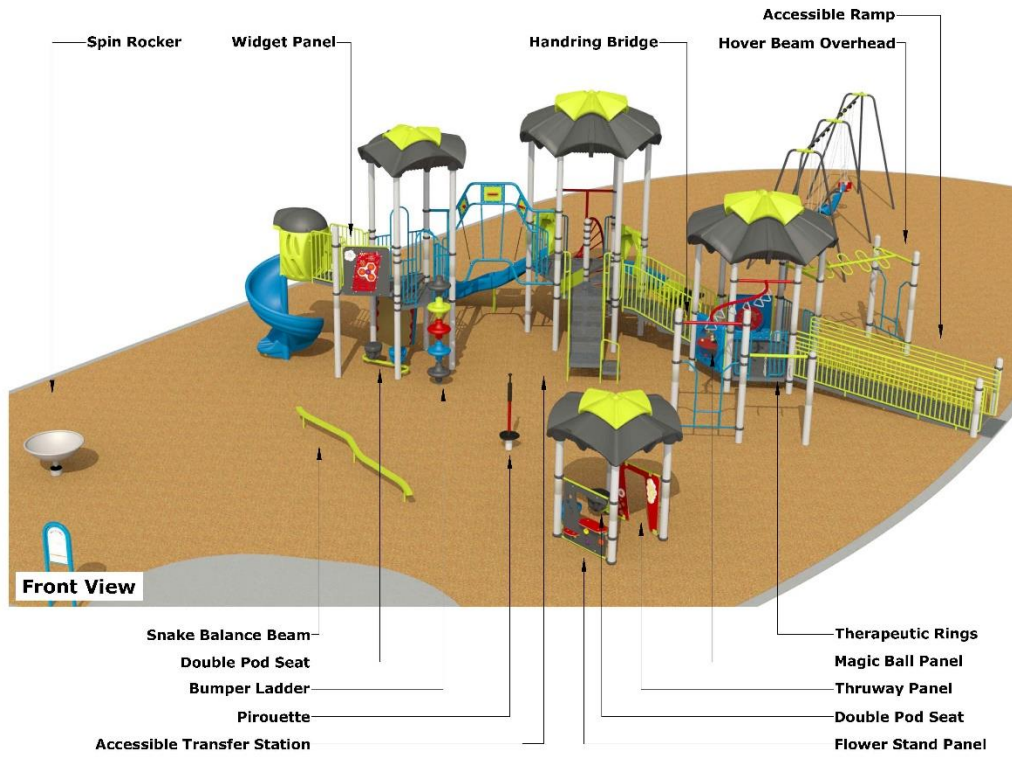
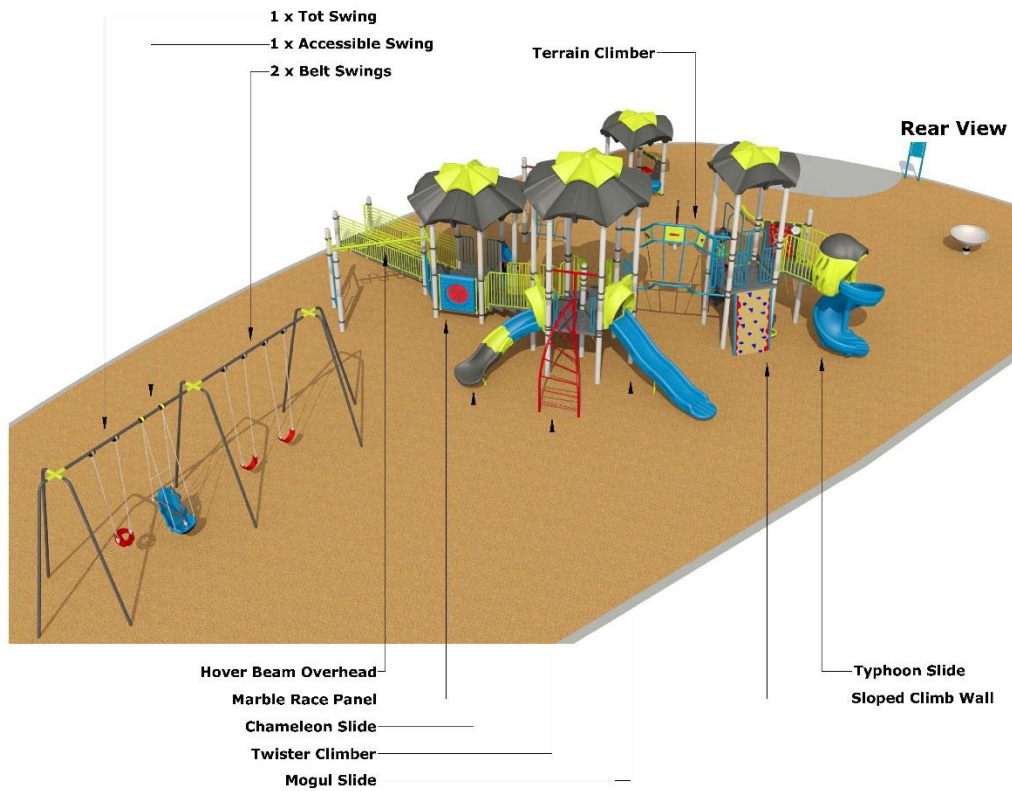


Figure 10: Colonial Drive Park Playground Concept 2 Rear View



Financial Implications

The budget for this project is being funded from the playground replacement capital project account PK0130.

Consultations

Two rounds of community engagement have been completed for this project. Recommendations from the December 17 AAC meeting, along with resident and stakeholder feedback, will be used to finalize the design for new play equipment. Construction will be tendered in early 2025.

Attachments

Attachment-1 Presentation Slide PDF

Departmental Approval

Mallory Lemon, Manager, Park and Trail Development

Report Author

Jude Gaboury, Project Manager, Park and Trail Development

This report was approved by:

Mallory Lemon
Manager, Park and Trail Development
Public Services
519.822.1260 extension 3560
mallory.lemon@guelph.ca