

Exhibition Park Neighbourhood Improvements Preliminary Design

Heritage Guelph

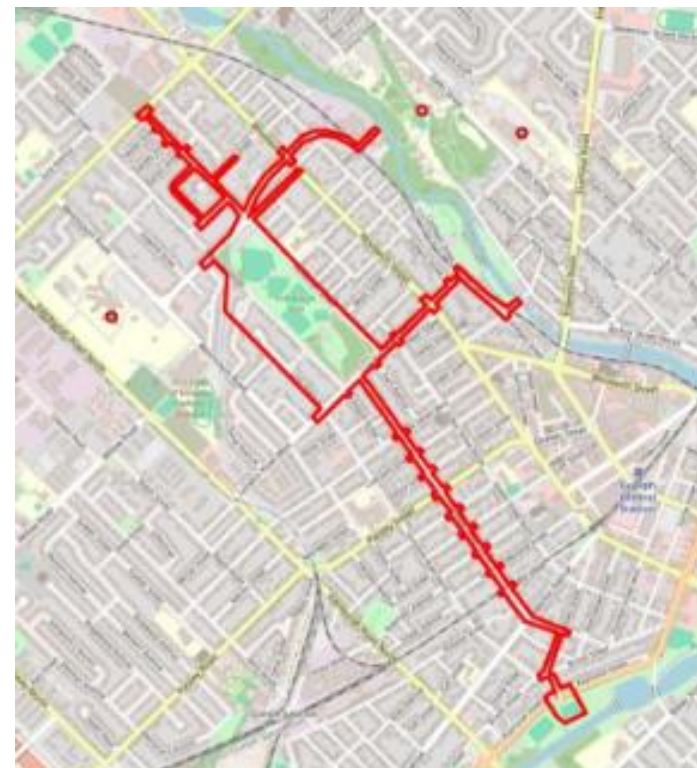
May 1st, 2025

Agenda

- Project Overview
- Cultural Heritage Reporting
- Archaeological Investigation Reporting
- Next Steps

Project Overview

- Preliminary Design project on streets and utility easements around Exhibition Park
- Stormwater Management Master Plan, Water and Wastewater Servicing Master Plan
- Aging asset replacement
- Majority of works within road right of way
- Part of 30% Design was to complete Stage 1 Archaeological Assessment and a Cultural Heritage Report



Cultural Heritage Report - 1

- Completed by ASI
- Identified 6 cultural heritage landscapes and one potential cultural heritage landscape, summarized 588 known and potential built heritage resources within the study area

Cultural Heritage Report - 2

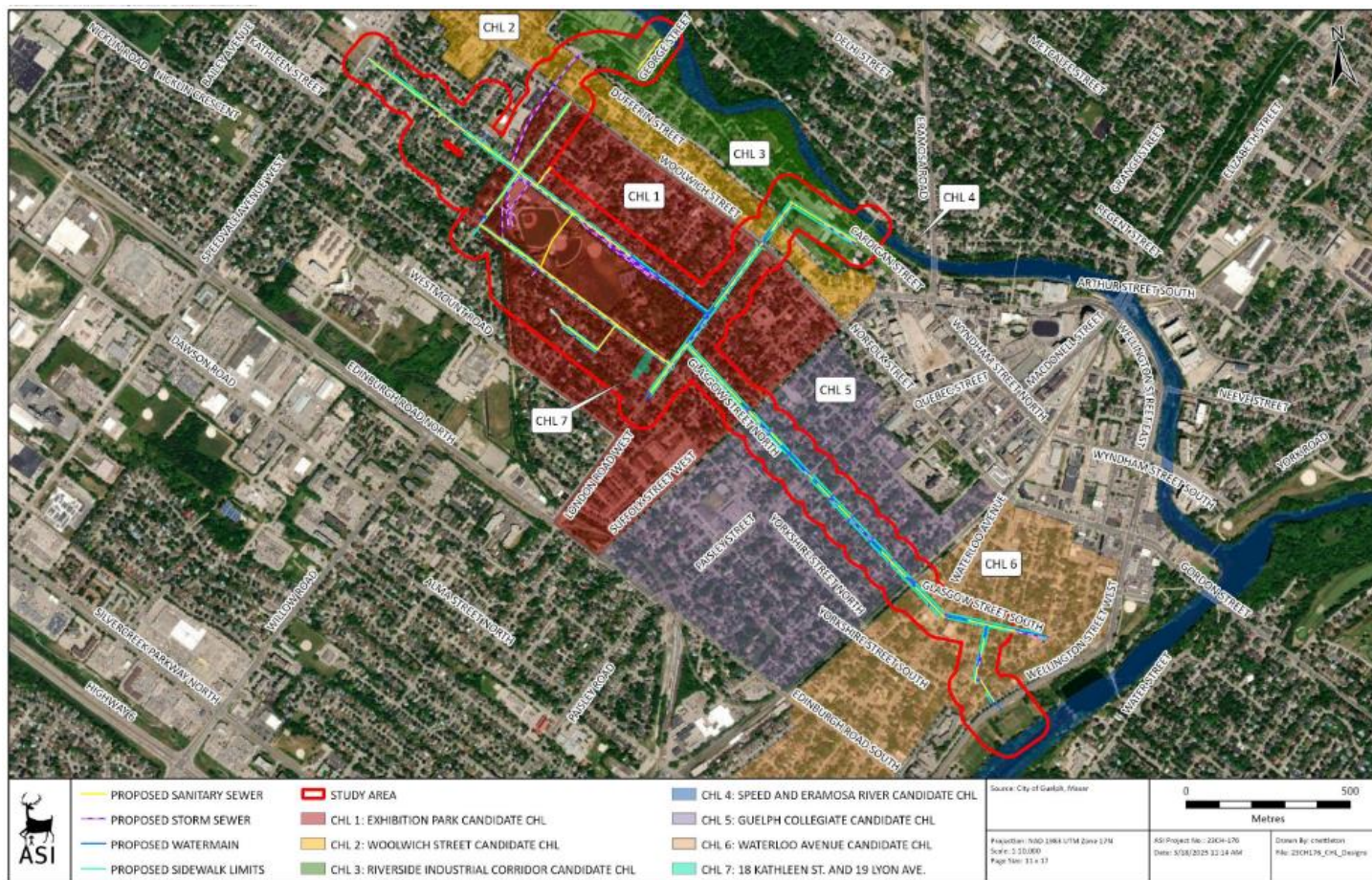


Figure 26: Location of Identified Cultural Heritage Landscapes (C.H.L.) in the Study Area

Cultural Heritage Report - 4

- Recommendations include:
 - Baseline vibration monitoring
 - Tree protection
 - Construction restoration
 - No-go zones if required
- All recommendations and mitigation measures will inform detailed design and construction

Stage 1 Archaeological Assessment

- Completed by ASI
- Identified areas of no potential (previously disturbed) and potential (requiring Stage 2 Archaeological Assessment prior to construction)
- Recommendations include:
 - Perform Stage 2 Archaeological work where required
 - Submit the report to the Ministry of Citizenship and Multiculturalism
- All recommended Stage 2 work will be completed pending final construction limits, established during detailed design

Next Steps

- For the preliminary design project:
 - Collect feedback from Heritage Guelph Committee
 - Submit the Stage 1 Archaeological Assessment to Ministry of Citizenship and Multiculturalism
- Several separate design and construction packages, each will:
 - Complete Stage 2 Archaeological Assessment as identified
 - Follow recommendations in CHR for mitigating measures

Questions?