

Guelph's Community Call to Climate Action

Understanding the Community Call to Climate Action

Climate change is caused by having far too much greenhouse gas (GHG) in the atmosphere. These GHGs are primarily because of human activity and burning fossil fuels for energy. Energy plays a large part of our everyday lives – powering our homes and appliances, running our local shops and businesses, and moving us around Guelph and beyond. While energy will continue to play a key role in our lives and our future, **we must understand the connection between energy and climate change so we can use energy in a better way.**

The Community Call-to-Climate Action will support everyone in Guelph:

- Better understand GHG emissions from energy use
- Identify ways we can reduce GHG emissions
- Help the Guelph community focus our collective climate action

Although Guelph is small compared to the rest of the world, we each release more GHG emissions than the global average. To help reduce GHG emissions, we all need to do our part—including here in Guelph. It will improve the well-being of our residents, our local economy and the environment, now and for generations to come.

How Climate Change impacts all of us

?
How does climate change impact you?

Climate change is not a distant problem. It affects absolutely everything, around the world and our daily lives right here in Guelph.



Lower farm yields



Rising food costs



More conflicts over limited resources



Extreme weather events causing property damage



People being displaced



Increased disease due to warmer temperatures



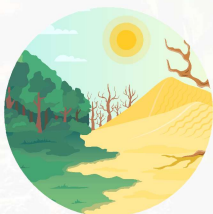
More invasive pests



Productivity loss



Higher insurance premiums



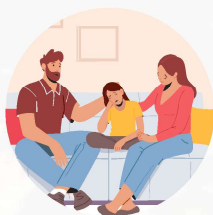
Water shortages



Poorer air quality



Climate anxiety



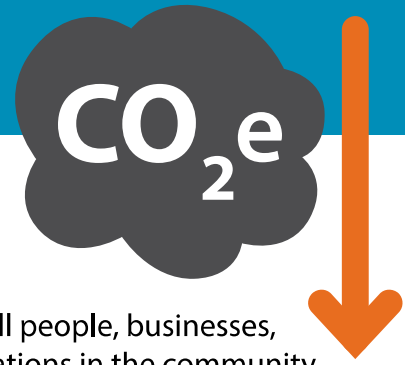
Youth disenfranchisement



More flooding

Our Community Climate Target

The City of Guelph is fighting climate change through its commitment to the United Nations Race To Zero campaign.



Encourage all people, businesses, and organizations in the community to help conserve energy and reduce GHG emissions.

Guelph's Race to Zero Community GHG Emissions

63%
reduction
per capita

in GHG emissions
by 2030 against
the 2018 baseline

Work together
to become a

**net zero
carbon
community**

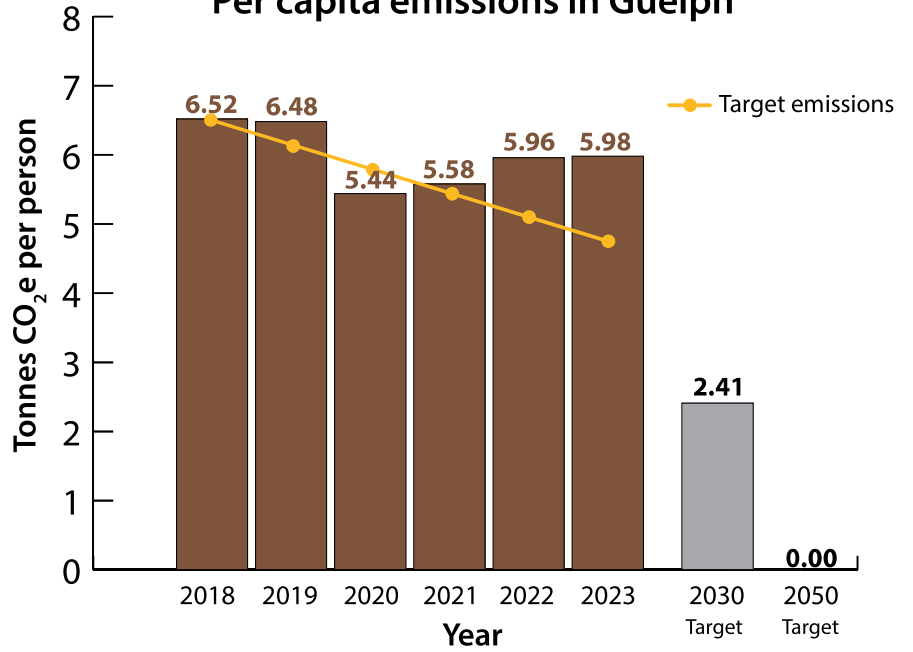
by 2050



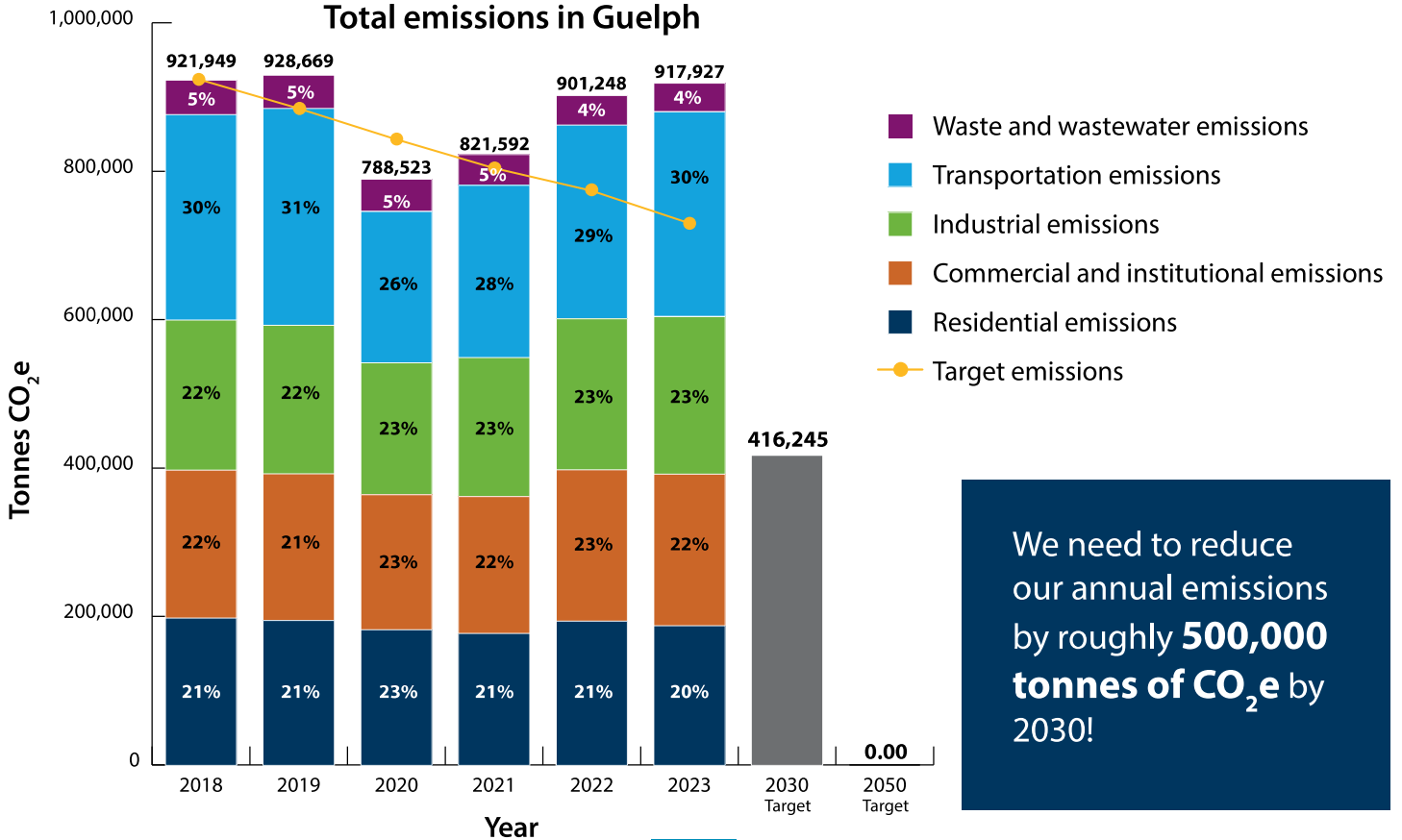
Our progress against targets

Tracking community GHG emissions helps us know how things are going and what must be done. Although some progress has been made over the years, more action is needed now to reduce GHG emissions and fight climate change.

Per capita emissions in Guelph



Total emissions in Guelph



We need to reduce our annual emissions by roughly **500,000 tonnes of CO₂e** by 2030!

Ways we can act to reduce community GHG emissions

Here are key focus areas where we can better manage our energy use and GHG emissions as we live, work and play in Guelph.

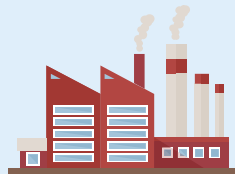
Energy efficient and low-carbon buildings

- Transition building heating systems to recover waste heat and use energy efficient heat pumps
- Carry out deep energy retrofits for existing buildings
- Make new buildings more energy efficient and meet standards for low-carbon design



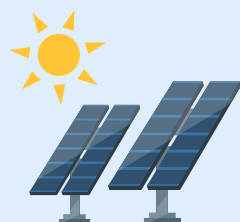
Decarbonized business operations

- Reduce energy consumption and reduce fossil fuel use by industrial, commercial and institutional businesses in their operations



Renewable energy

- Increase solar generation on buildings and parking lots
- Explore large-scale renewable energy projects within Guelph



Sustainable transportation

- Expand the network of safe and accessible streets and trails to promote walking, cycling and rolling
- Advance local and inter-regional transit to be a better option than personal automobile use
- Adopt more electric vehicles



Circular economy

- Reduce waste by consuming less and more sharing and reusing
- Use low embodied carbon construction
- Recover energy from waste



Natural environment

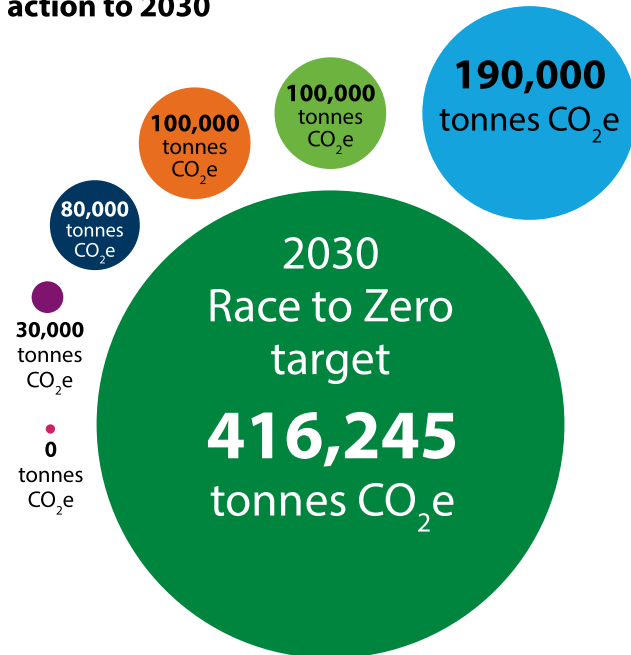
- Preserve greenspaces by increasing densification and mixed-use neighbourhoods where residents can live, work and play
- Protect and expand carbon sequestration through trees, wetlands, soils, and other nature-based solutions



What do we need to do?

We need real action by all, and we need to act now. These are the priority climate actions that will help us reach our 2030 Race To Zero targets and fight climate change.

Carbon reduction potential of each priority climate action to 2030



Total 2023 emissions
917,927
tonnes CO₂e

Homeowners:

- Have **40,000** homes in Guelph change their heating systems to low carbon heat pumps

Builders and Developers:

- Design and build **all** new buildings that are more energy efficient and be net zero carbon

Vehicle owners:

- Replace **60,000** internal combustion vehicles with sustainable transport modes or electric vehicles

City:

- Manage and maintain fugitive emissions from waste management and wastewater treatment to reduce emissions by **30,000 tCO₂e**

Companies:

- All industrial companies in Guelph must work together and focus resources to reduce sector emissions by **100,000 tCO₂e**
- All commercial and institutional companies in Guelph must work together and focus resources to reduce sector emissions by **100,000 tCO₂e**

Answer the Community Call to Climate Action

We need climate action now!

Support each other to get priority climate actions done in the community.

Live, work, and play in ways that reduce community GHG emissions.

Only by coming together as a community and all of us doing our part to use less fossil fuels to reduce GHG emissions, our collective actions will add up to what is needed to achieve our Race To Zero targets and fight climate change.

Need more information and ideas on how to take climate action?

Read the Guelph's Community Call to Climate Action Backgrounder.



For more information

1 Carden Street
Guelph, ON N1H 3A1

519-822-1260

guelph.ca

Accessible formats
available by contacting
519-822-1260 extension
2672/TTY 519-826-9771.

