

Guelph's Community Call to Climate Action

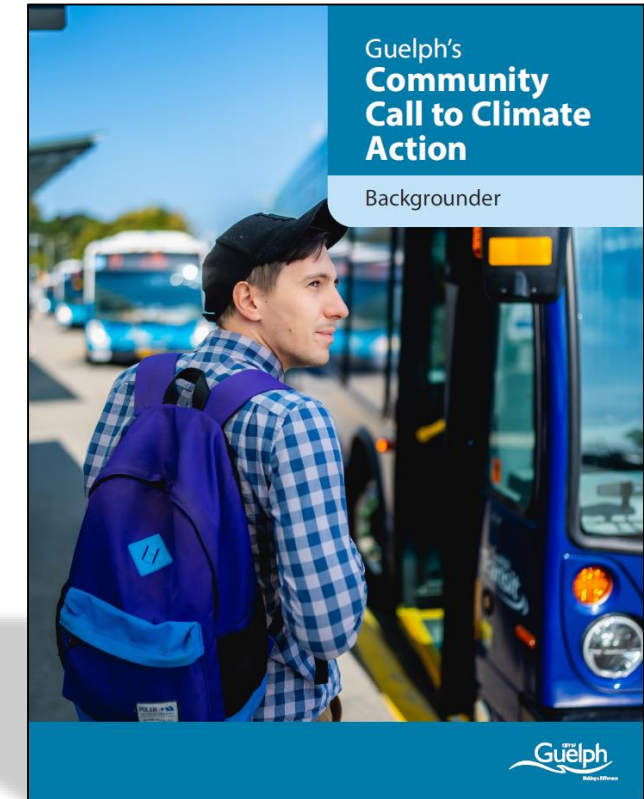
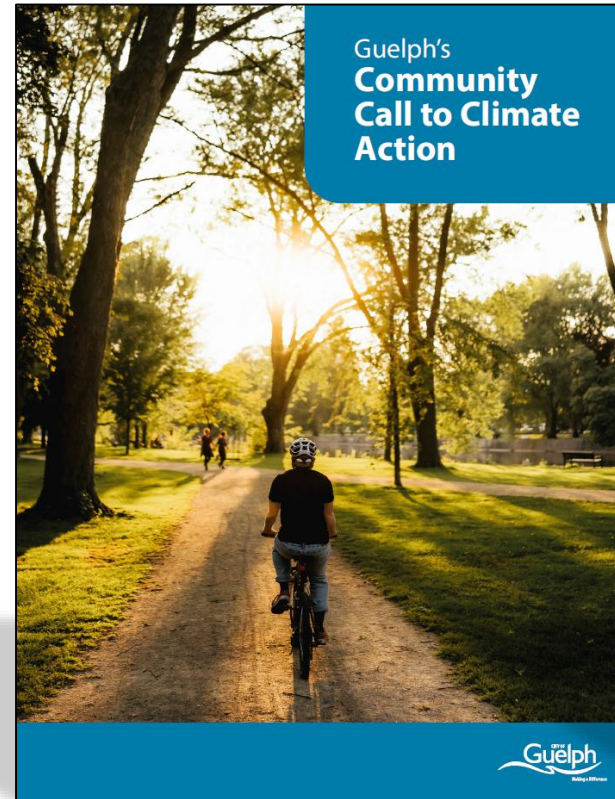
Bryan Ho-Yan, M.A.Sc., P.Eng., CEM

May 6, 2025

Guelph's Community Call to Climate Action

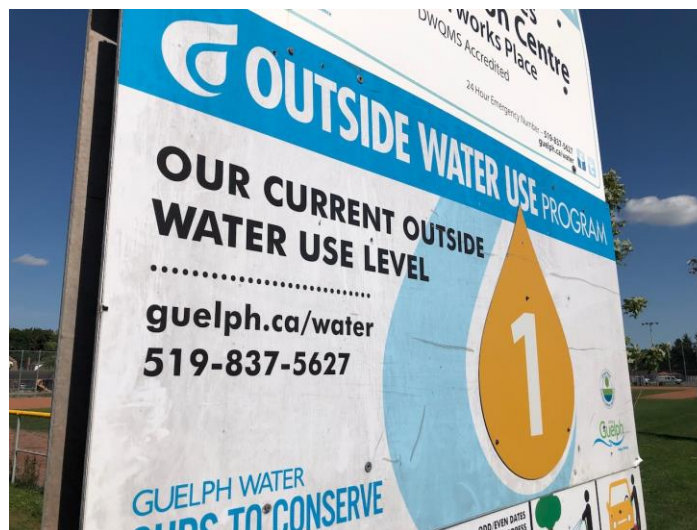
Support everyone in Guelph...

- better understand GHG emissions from energy use
- identify ways we can reduce GHG emissions
- help the Guelph community focus our collective climate action



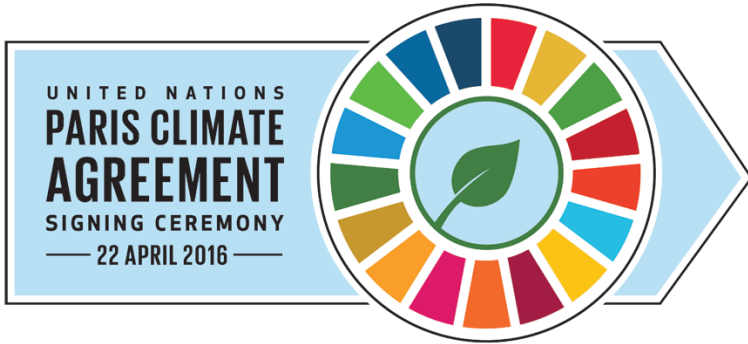
Where we see climate change in **Guelph** everyday

- Heat waves
- Heavy snow fall
- Ice storms
- Extreme winds
- Flooding
- Drought
- Infestation



- Biodiversity decline
- Human health impacts
- Infrastructure damage
- Increased cost of living

Climate targets



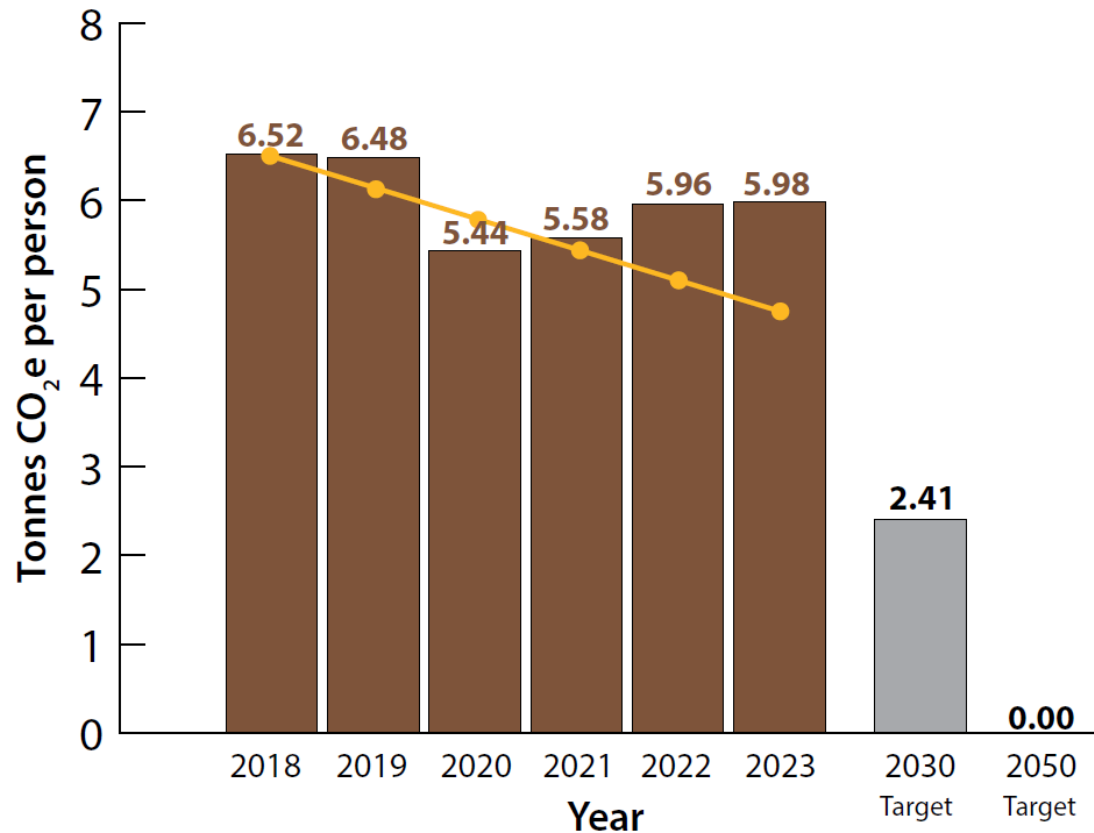
- **Canada**—Canadian Net-Zero Emissions Accountability Act
- **Ontario**—Made-in-Ontario Environment Plan



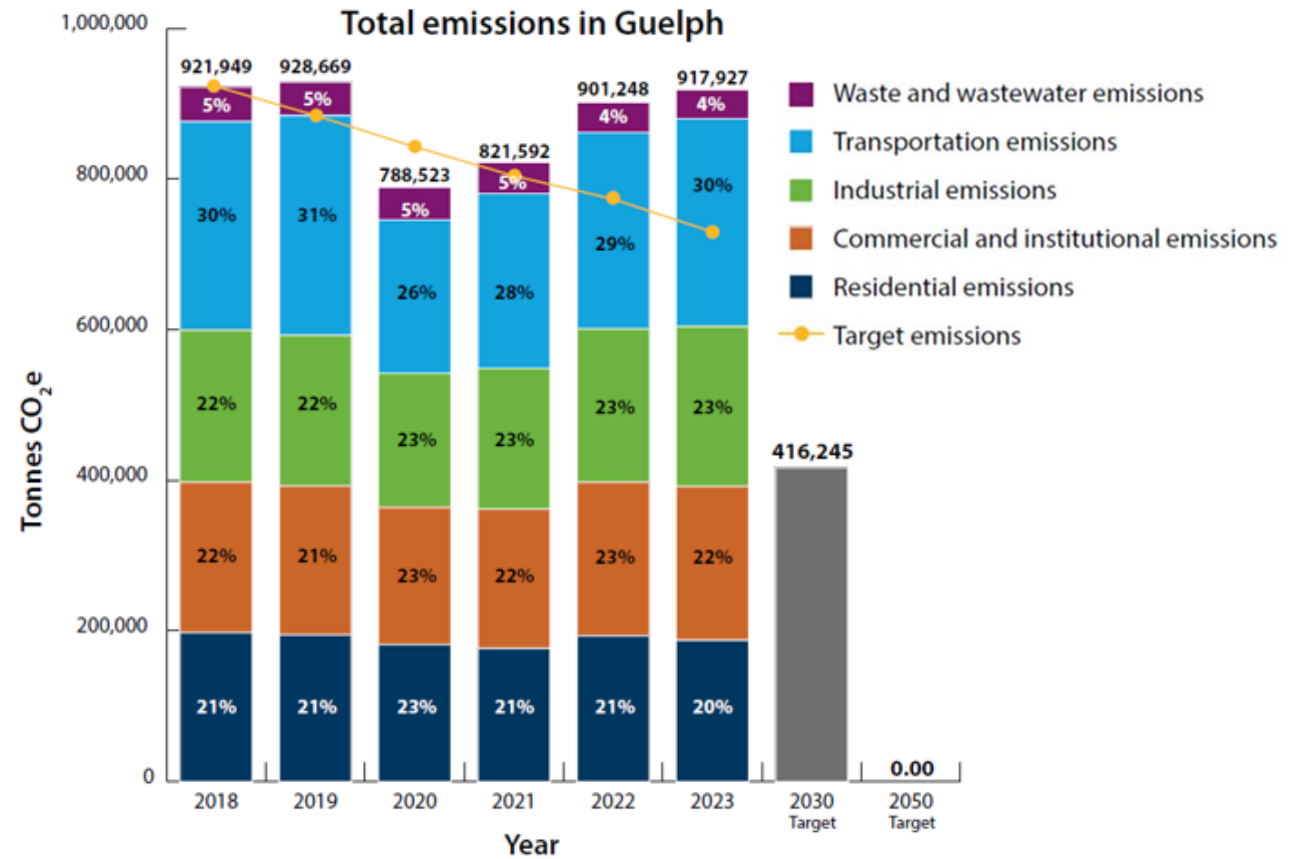
- Reduce per capita GHG emissions by **63%** against the 2018 baseline **by 2030**
- Work together to become a **net zero carbon** community **by 2050**

Community GHG emissions

Per capita emissions



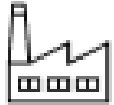
Total emissions



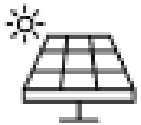
Key focus areas



Energy efficient and low carbon buildings



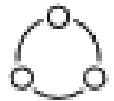
Decarbonized business operations



Renewable energy



Sustainable transportation



Circular economy



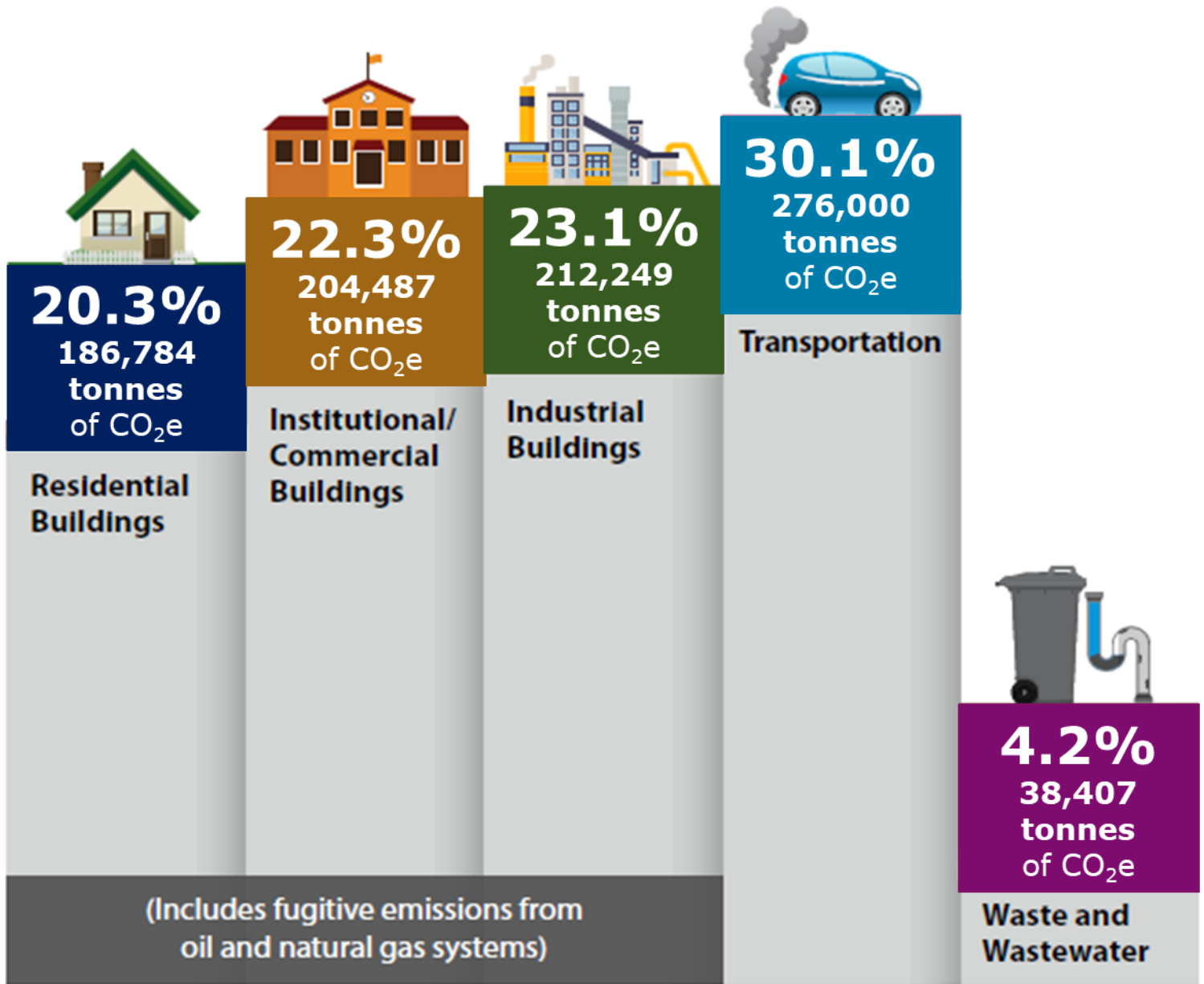
Natural environment

Sector GHG emissions

Guelph's 2023
Community
GHG emissions
917,927
tonnes CO₂e

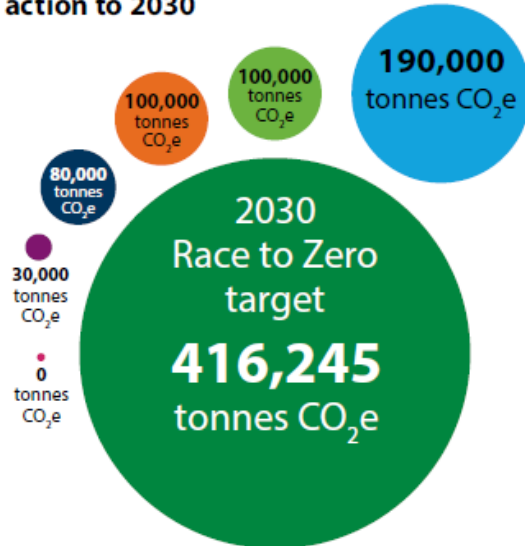


5.98
tonnes CO₂e
per person in
Guelph



Priority climate actions

Carbon reduction potential of each priority climate action to 2030



Homeowners:

- Have **40,000** homes in Guelph change their heating systems to low carbon heat pumps

Builders and Developers:

- Design and build **all** new buildings that are more energy efficient and be net zero carbon

Vehicle owners:

- Replace **60,000** internal combustion vehicles with sustainable transport modes or electric vehicles

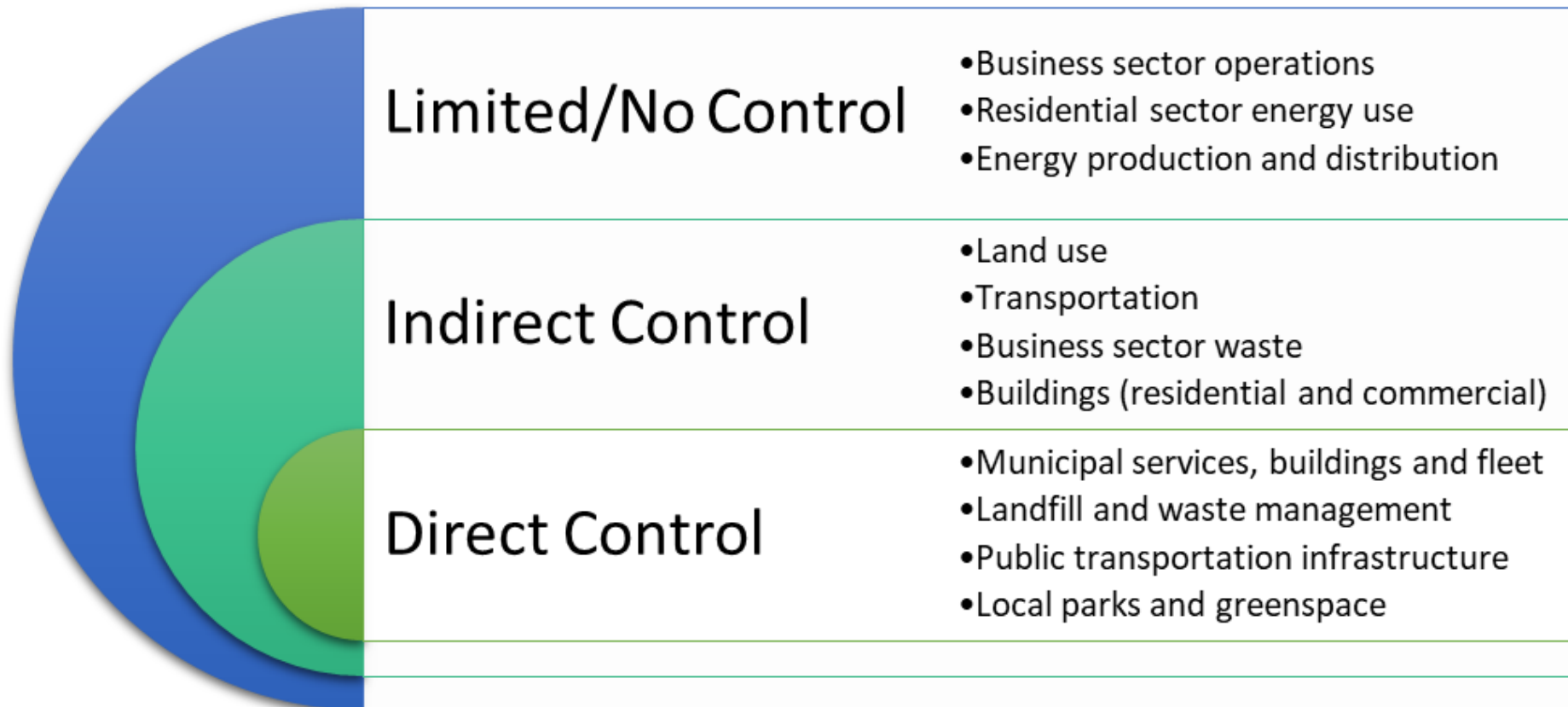
City:

- Manage and maintain fugitive emissions from waste management and wastewater treatment to reduce emissions by **30,000 tCO₂e**

Companies:

- All industrial companies in Guelph must work together and focus resources to reduce sector emissions by **100,000 tCO₂e**
- All commercial and institutional companies in Guelph must work together and focus resources to reduce sector emissions by **100,000 tCO₂e**

Sphere of influence



adapted from [Federation of Canadian Municipalities Factsheet: Municipal governance for deep decarbonization](#)

Community supporting efforts

- Collecting emissions data, tracking progress and reporting
- Teaming up with community groups and environmental non-profits
- Enabling household efficiency upgrades and lowering energy costs
- Empowering youth to be climate leaders
- Working alongside industrial, commercial, and institutional (ICI) partners
- Strengthening climate awareness and promoting activation in the community
- Using policy to guide climate action throughout the community
- Investing in reliable infrastructure to help the community be more sustainable
- Shedding light on energy access and poverty challenges in Guelph

Answer the Community Call to Climate Action

