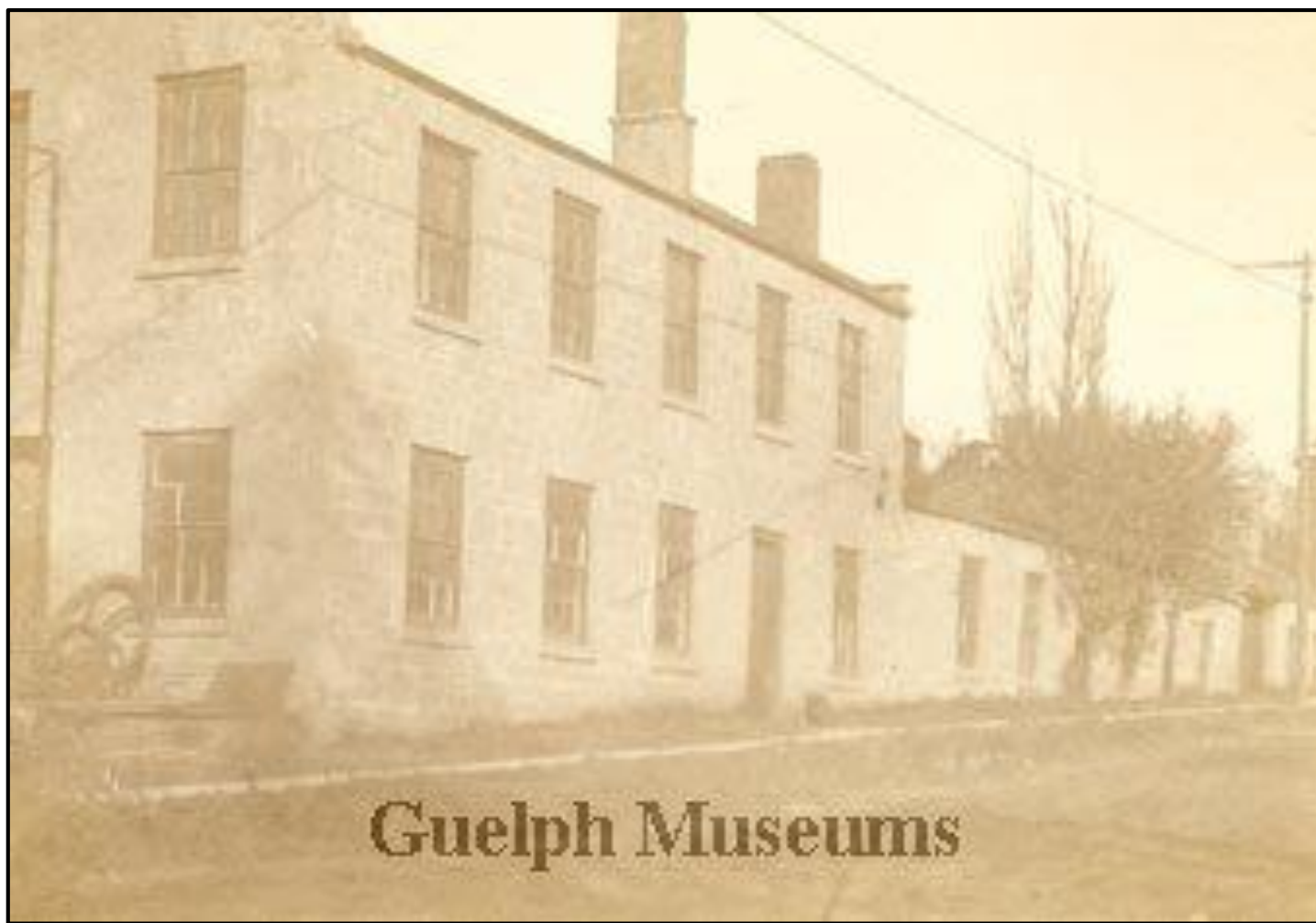


30 & 32 Eramosa Road: Objection to Notice of Intention to Designate

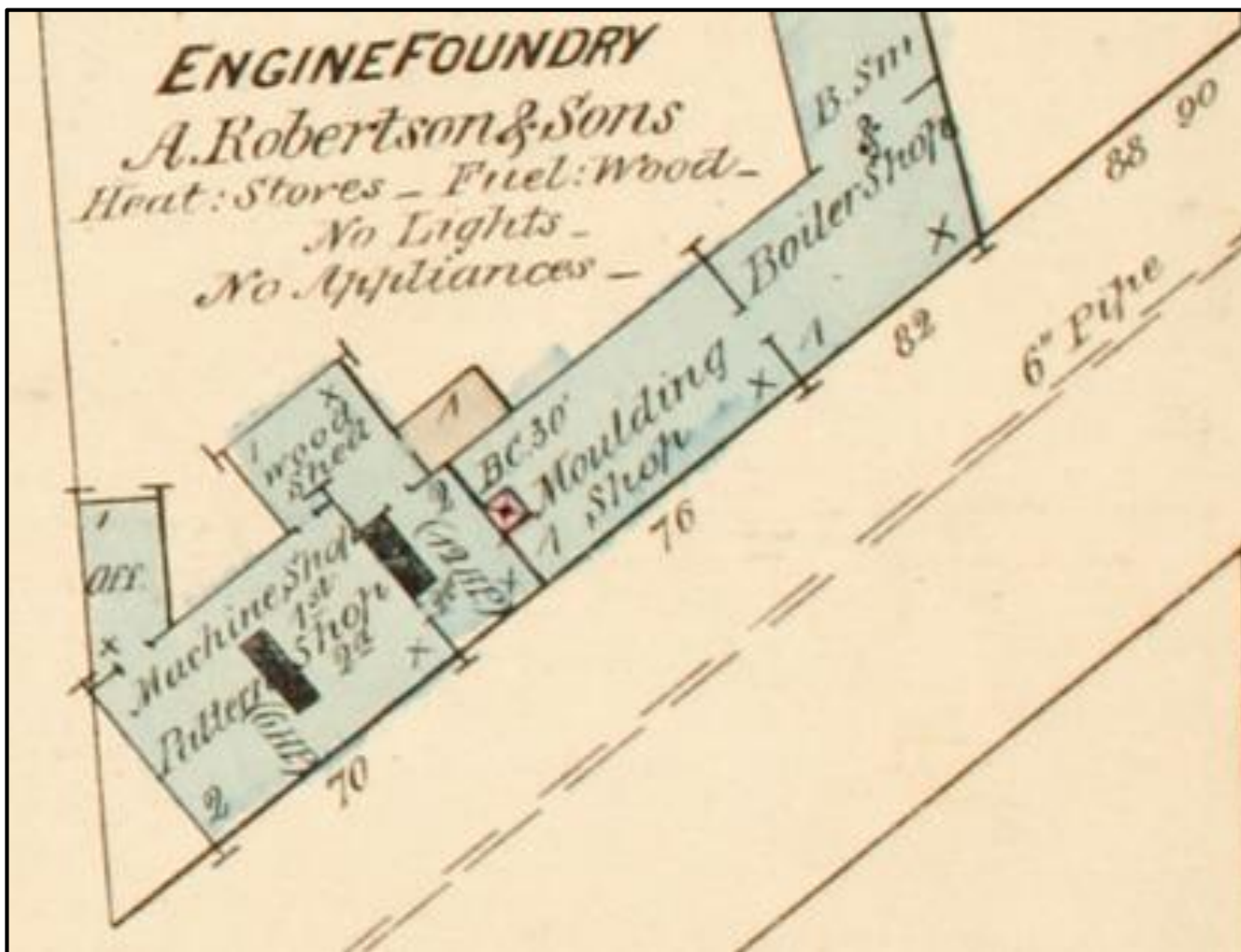


The Robertson Foundry in Brosius' 1872 Birdseye Map

Photograph of the Robertson Foundry circa 1920



"A. Robertson & Sons Engine Foundry," as seen in 1892 Fire Insurance Plan



Gordon Couling's Photograph of Robertson Foundry, 1974



30-32 Eramosa, December 2024

