

# Strategic Initiatives and Intergovernmental Services

**Jodie Sales, General Manager**

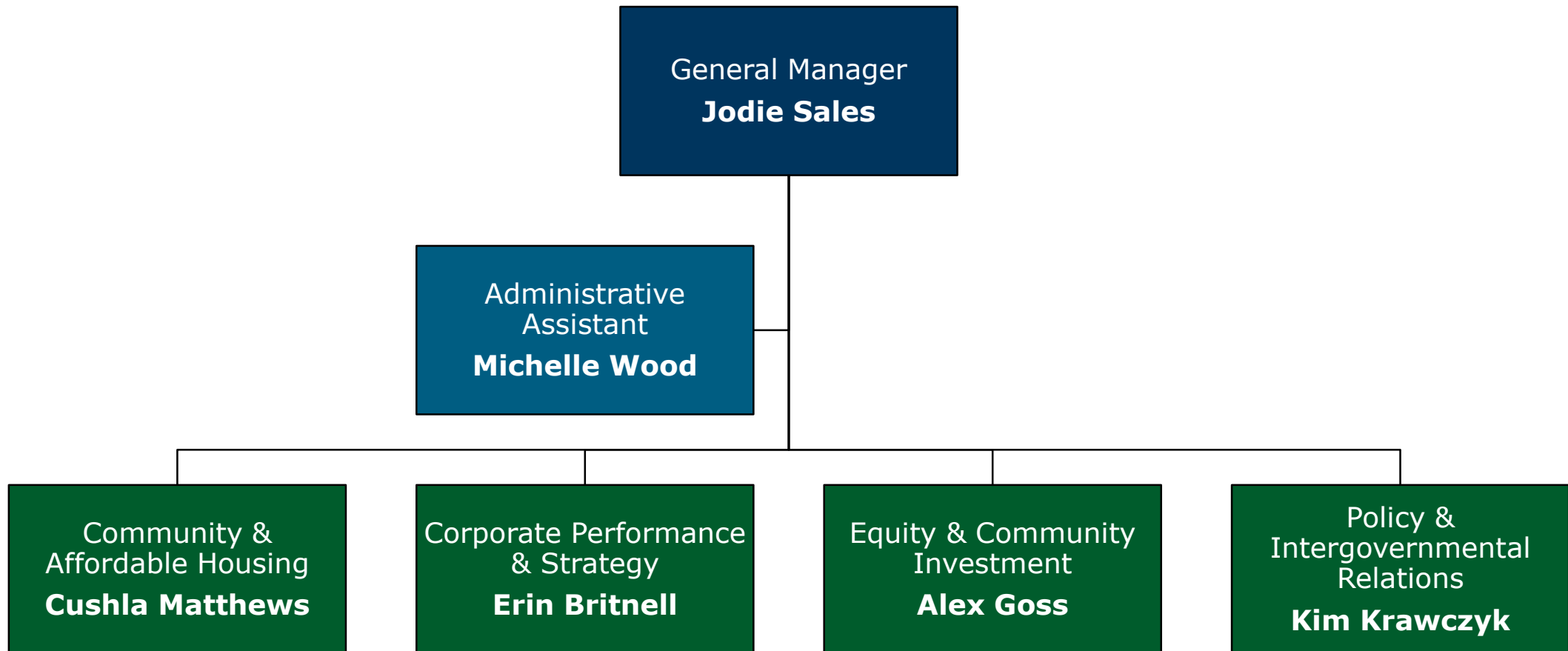
July 16, 2025

# Who We Are



Photo: The Strategic Initiatives and Intergovernmental Services team.

# Who We Are (2)



# How We Support the Strategic Plan

## Foundations

- Advocate for our city
- Lead with accountability
- Provide excellent service

## City Building

- Improve housing supply

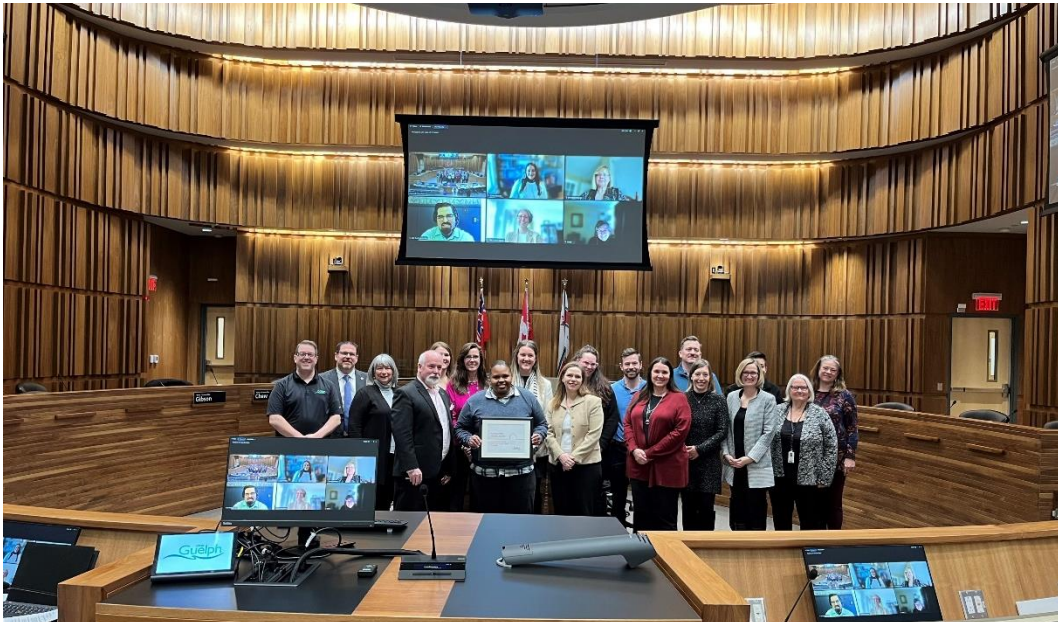
## People and Economy

- Support community well-being



# How We Support the Strategic Plan (2)

**96 per cent score on  
intergovernmental advocacy index**



City of Guelph council and staff members

**\$21.4 million awarded through  
the Housing Accelerator Fund**



14 Edinburgh Lot

# How We Support the Strategic Plan (3)

**Six relevant policies, programs, and initiatives reviewed with an equity lens**



Photo: Toronto Metropolitan University

**Seven Lean Belt Certification improvements implemented**

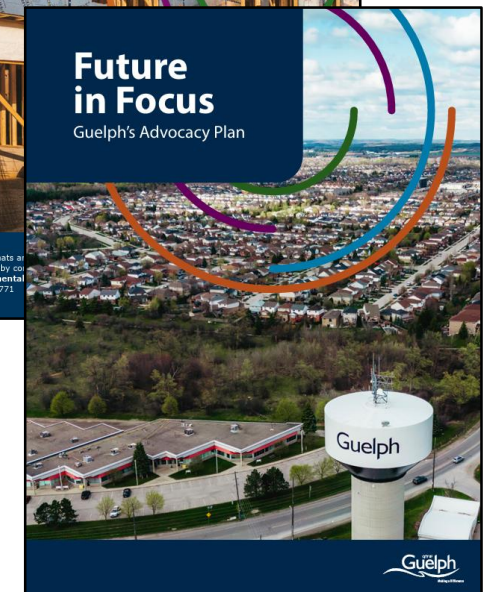
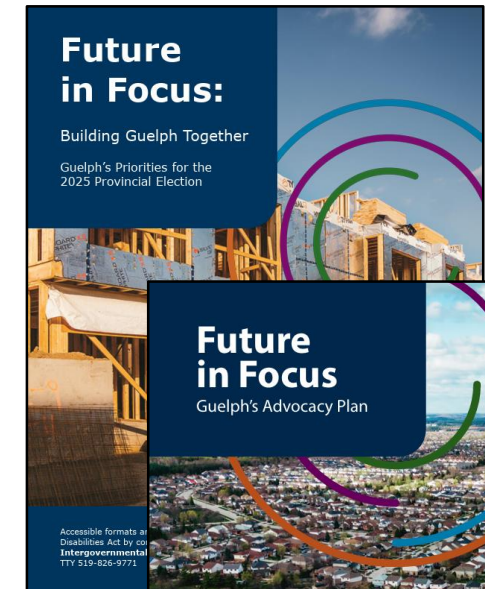
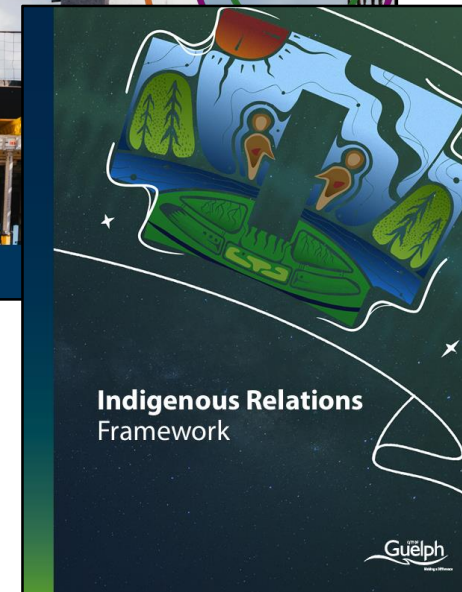


Left to right: Dominka Wrobel, Yunzi Liu, Laura Catalano-Bragues, Ujjwal Verma, Alyssa LeBlanc, Deepa Puthran



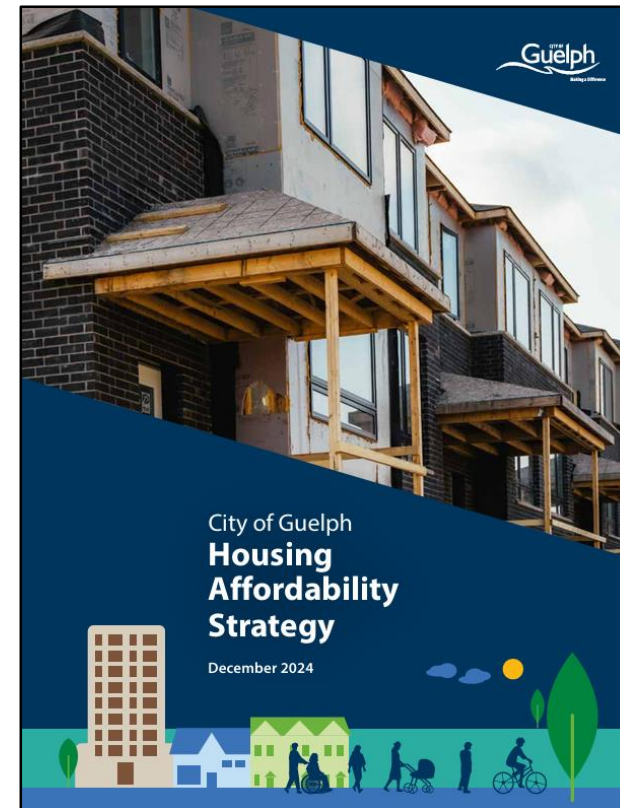
# Our Core Service Objectives

Foster intergovernmental relationships that enable advocacy for policy changes, successful grant and funding applications, and positive Indigenous relationships.



# Our Core Service Objectives (2)

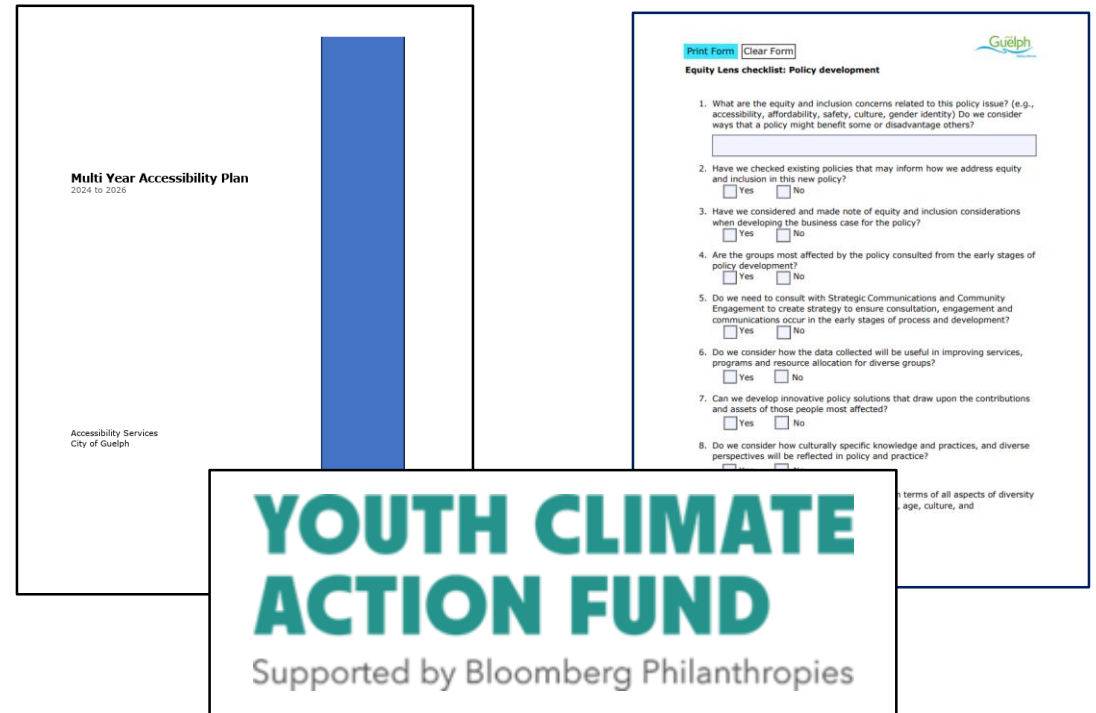
Lead efforts to address the housing crisis through a human rights-based approach, focusing on solutions for housing insecurity and affordability for our residents.





# Our Core Service Objectives (3)

Nurture a more inclusive, connected, and prosperous city by supporting equity and community investment initiatives.



# Our Core Service Objectives (4)

Foster a culture of performance excellence through data-driven decision making, accountability, and comprehensive planning — driving transformational change across our organization.



# Key Challenges and Opportunities

## Challenges

- Policy changes from other levels of government
- Growing geopolitical and economic challenges
- Changing social trends

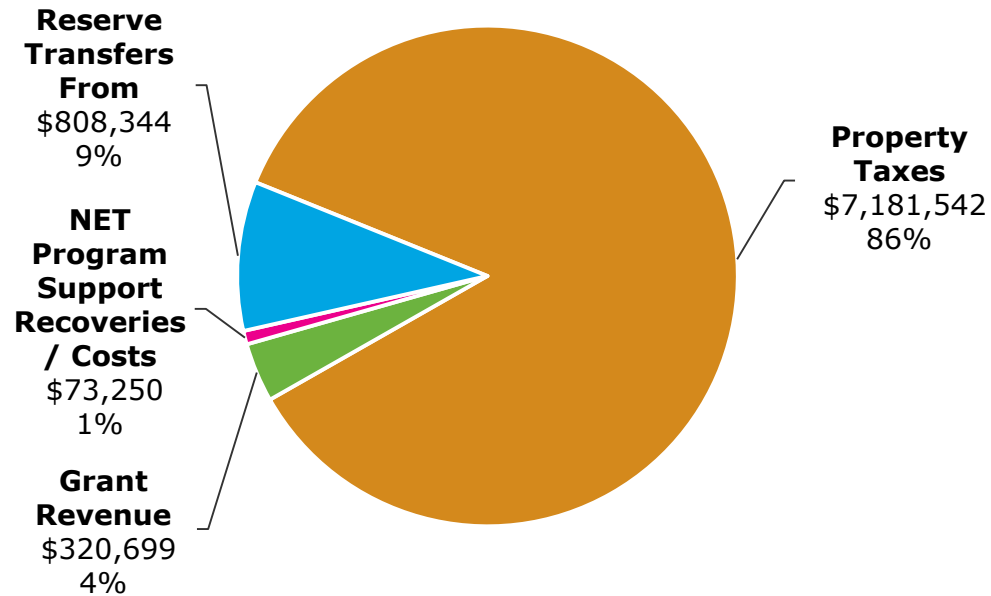
## Opportunities

- Relationships with other levels of government
- Equity, inclusion and accessibility
- Our role in housing affordability
- Growing our performance culture
- Data-driven decision-making
- Further collaboration with Wellington County

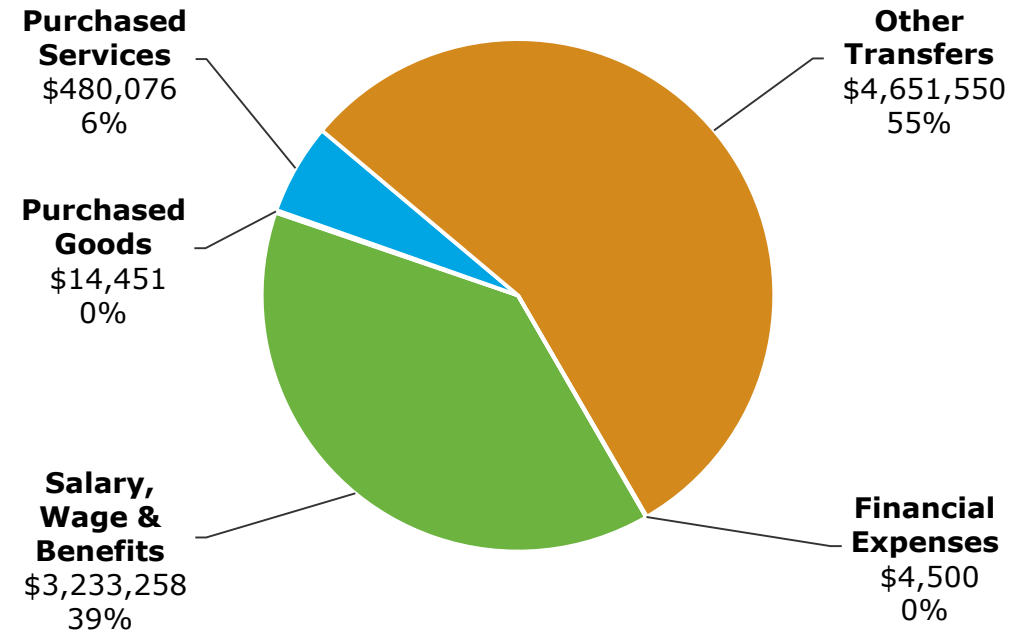


# Budget Highlights (Operating)

## Revenues, Recoveries and Reserve Transfers

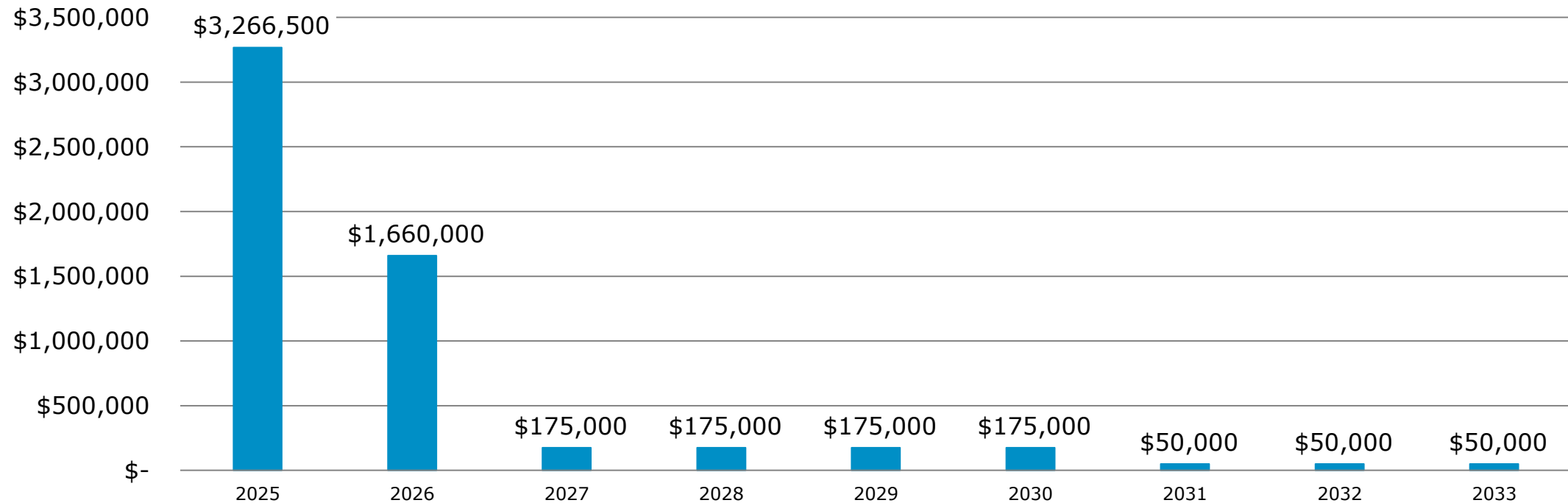


## Expenses



# Budget Highlights (Capital)

**Capital Budget Forecast**



# Connect with Us

## **Community and Affordable Housing:**

- [affordablehousing@guelph.ca](mailto:affordablehousing@guelph.ca)
- [affordablehousingcip@guelph.ca](mailto:affordablehousingcip@guelph.ca)

## **Corporate Performance and Strategy:**

- [strategy@guelph.ca](mailto:strategy@guelph.ca)

## **Equity and Community Investment:**

- [accessibility@guelph.ca](mailto:accessibility@guelph.ca)
- [community@guelph.ca](mailto:community@guelph.ca)
- [communitygrant@guelph.ca](mailto:communitygrant@guelph.ca)
- [communityinvestment@guelph.ca](mailto:communityinvestment@guelph.ca)
- [LIP@guelph.ca](mailto:LIP@guelph.ca)

## **Policy and Intergovernmental Relations:**

- [grants@guelph.ca](mailto:grants@guelph.ca)
- [intergovernmental.relations@guelph.ca](mailto:intergovernmental.relations@guelph.ca)