

**STRUCTURAL DESIGN**  
 MTE 34622-600  
 DESIGN LOADS (UNFACTORED PSF)  
 ROOF SL=30.2, DL=15  
 FLOOR LL=500, DL=15

- ALL CONSTRUCTION TO CONFORM WITH THE 2012 OBC.
- GC TO ENSURE A MINIMUM SOIL BEARING CAPACITY OF 3000 PSF.
- ALL LUNGER TO BE SPF #142 (MIN.), ATTACH BOTTOM WALL WITH 5/8" DIA. ANCHOR BOLTS SPACED AT 8'-0" O.C. (MAX) WITH A MINIMUM OF 2 BOLTS IN WALLS LESS THAN 8'-0" LONG. PROVIDE AN ANCHOR ON BOTH SIDES OF DOOR OPENINGS AND BOTTOM PLATE SPLICES.
- W-SHAPE STEEL BEAMS (GRADE 350W).
- STEEL ANGLES (GRADE 300W). PROVIDE L3.5X3.5X1/4" LOOSE LINTELS FOR MASONRY VENEER SUPPORT OVER 4'-0" WINDOWS (2 COATS OF SHOP PRIMER OR HDG).

**NOTE:**  
 This drawing and all associated documentation are the confidential property of BJC architects inc. and must be returned upon request. Any duplication, reuse, revision and/or distribution in part or whole without the prior written authorization of BJC architects inc. is strictly prohibited. Each contractor will check and verify all dimensions and report all errors and omissions to the design professional whose seal is affixed to this drawing. Do not scale this drawing.

The information and material herein reflect the best judgement of BJC architects inc., in light of the information available to them at the time of preparation of these documents. Any use which a third party makes of these documents, or any reliance on or decisions to be made based on them, is the sole responsibility of such third party. BJC architects inc. accepts no responsibility for damages, if any, suffered by any third party as a result of decisions made or actions based on these documents © BJC architects inc. 2019.

- GENERAL NOTES:**
- THIS DRAWING IS TO BE READ IN CONJUNCTION WITH ALL OTHER STRUCTURAL, MECHANICAL & ELECTRICAL DRAWINGS FOR A COMPLETE SCOPE OF WORK.
  - REFER TO ARCHITECTURAL DRAWING A-001 FOR WALL TAG DESCRIPTIONS & DETAILS.
  - APPLY A CONTINUOUS BED OF SEALANT PRIOR TO INSTALLATION OF PARTITION WALLS AROUND MECHANICAL & ELECTRICAL ROOMS.
  - AT EXTERIOR & INTERIOR FIRE RATED WALL, ENSURE ALL PENETRATIONS & GAPS ARE FIRE STOPPED/ SEALED, WITH AN APPROVED FIRE STOP MATERIAL TO MAINTAIN DESIGNATED RATING OF DESIGN AS REQUIRED.
  - ALL WET WALLS SHALL BE COORDINATED WITH PLUMBING CONTRACTOR.
  - ALL PARTITIONS WHICH SHALL SUPPORT FIXTURES, MILLWORK ACCESSORIES & EQUIPMENT ARE TO BE REINFORCED WITH PLYWOOD BLOCKING AS REQUIRED TO PROVIDE RIGID & ADEQUATE SUPPORT.
  - ALL WALLS ARE TO BE FRAMED FULL HEIGHT TO  $u/s$  OF ROOF STRUCTURE ABOVE, UNLESS SPECIFICALLY IDENTIFIED.
  - CONTRACTOR MUST VERIFY ALL DIMENSIONS AND BE RESPONSIBLE FOR SAME. REPORT ANY ERRORS OR OMISSIONS TO THE ARCHITECT IN WRITING PRIOR COMMENCING WITH THE WORK. PRINTS ARE NOT TO BE SCALED.

**DRAWING NOTES:**

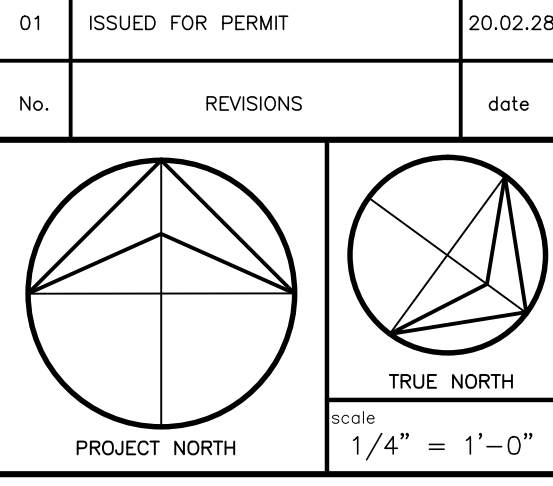
- LEGEND:**
- EXISTING WALLS.
  - NEW WALLS.
  - EXISTING WINDOWS.
  - EXISTING DOOR & FRAME.
  - NEW DOOR & FRAME.
- ROOMNAME**
- 101 ROOM NAME AND NUMBER
  - XX DOOR NUMBER
  - SX SCREEN NUMBER



**NOTE:**  
 This drawing and all associated documentation are the confidential property of BJC architects inc. and must be returned upon request. Any duplication, reuse, revision and/or distribution in part or whole without the prior written authorization of BJC architects inc. is strictly prohibited. Each contractor will check and verify all dimensions and report all errors and omissions to the design professional whose seal is affixed to this drawing. Do not scale this drawing.

The information and material herein reflect the best judgement of BJC architects inc., in light of the information available to them at the time of preparation of these documents. Any use which a third party makes of these documents, or any reliance on or decisions to be made based on them, is the sole responsibility of such third party. BJC architects inc. accepts no responsibility for damages, if any, suffered by any third party as a result of decisions made or actions based on these documents © BJC architects inc. 2019.

01	ISSUED FOR PERMIT	20.02.28
No.	REVISIONS	date



drawn	A.V.
lost worked on by	2020.02.25 M.C.
checked	BRJ
print date	20.02.28

**BJC**  
 architects inc.  
 R.R.#2 8016 HIGHWAY#7, GUELPH, ONTARIO, CANADA N1H 6H8  
 TEL: (519) 822-7390 FAX: (519) 822-5883  
 www.bjcarchitects.com

client  
**REID'S HERITAGE HOMES**  
 6783 WELLINGTON RD  
 CAMBRIDGE, ONTARIO N3C 2V4

project  
**VBA LANDSCAPE SHOP**  
 96 OAKDALE DRIVE  
 GUELPH, ONTARIO N1G 5K9

drawing title  
**UPPER FLOOR PLAN**

reference  
 project no. 19-129 client reference number  
 sheet no. **A-11101**