

Downtown Infrastructure Renewal Program

St. George's Square - Final Plan

**City Council Meeting
December 16, 2025**

St. George's Square – July 2025 Design Concept



What We Heard

- “Wow” factor
- More natural materials, trees and native planting - less concrete
- More flexibility
- More Downtown Guelph heritage character
- Mixed feedback on the public washroom
- Mixed feedback on the placemaking structure / area for play
- Space for outdoor patios to be located and businesses to operate
- Additional lighting
- Community-lead idea for a tribute to Robert Munsch
- Mixed feedback on the gateway features
- More opportunities for shade and seating, including accessible seating

St. George's Square – December 2025 Final Plan (3D)



Wow Factor & Promenade



Flexibility



Natural Materials & Heritage Character



Placemaking Initiative



In addition to the community-lead idea, these are potential interactive placemaking structure options based on community engagement



Lighting



Modifications



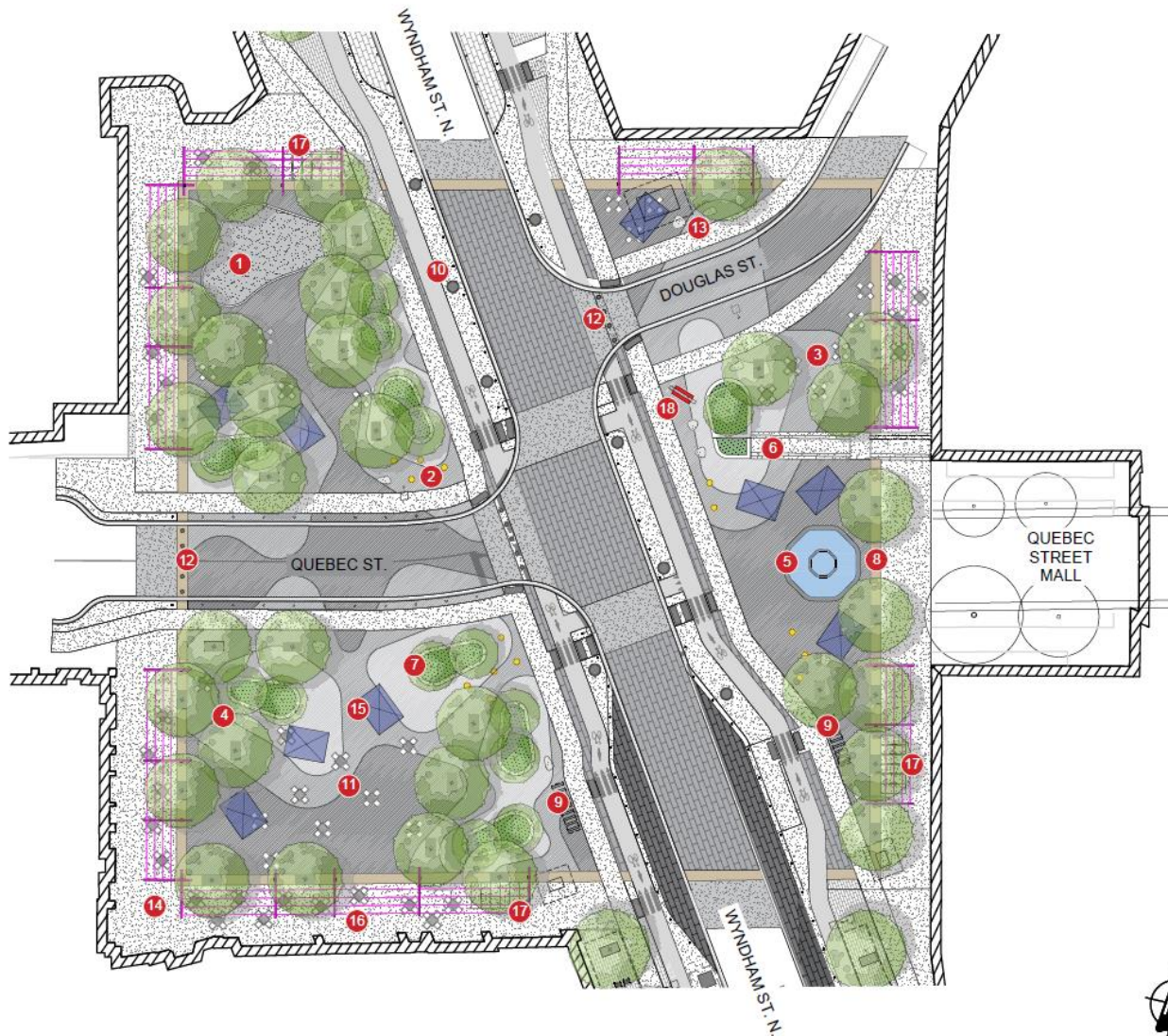
- Gateway Features
- Public Washroom
- Shade Structures



Consultations & Engagement



St. George's Square – December 2025 Final Plan



LEGEND

- 1 Open area for placemaking initiative.
- 2 Vertical light columns to highlight main intersection.
- 3 Plaza area with seating.
- 4 Tree plantings throughout The Square.
- 5 Relocated fountain with basin, centered on Quebec Street Mall entrance.
- 6 Steps that provide seating opportunities.
- 7 Custom raised planters with seating opportunities.
- 8 Walkway and banding to define perimeter of square.
- 9 Transit shelters.
- 10 Seasonal removable planters.
- 11 Decorative paving.
- 12 Removable barriers to close off streets to vehicular traffic during events.
- 13 Concrete 'pebble' seating features.
- 14 Promenade - Opportunities for patios and seating.
- 15 Shade umbrellas.
- 16 Catenary light structure around perimeter of square.
- 17 Bicycle parking.
- 18 The Big Heart.



ST. GEORGE'S SQUARE FINAL PLAN



DECEMBER 2025

Questions and Comments?

