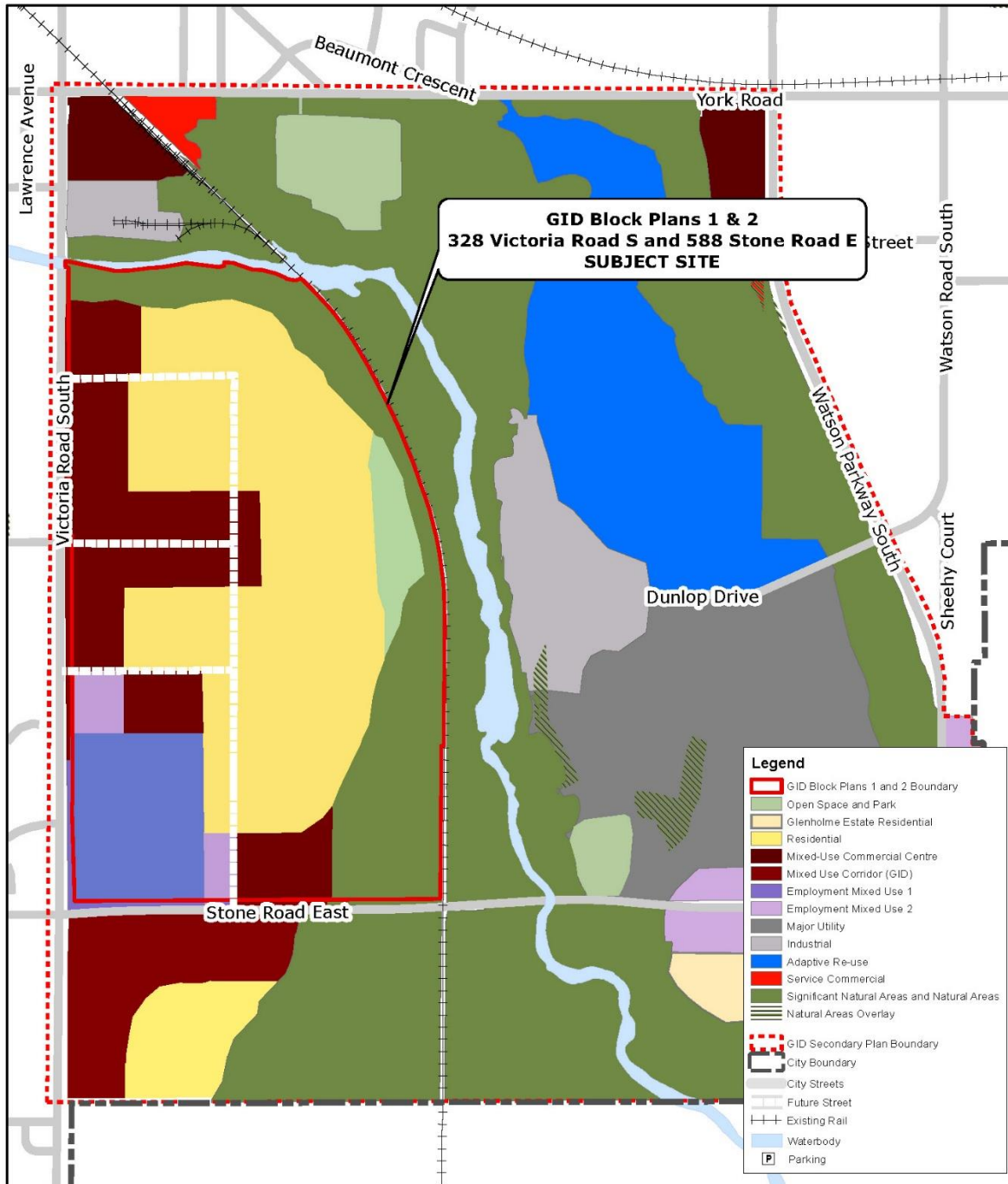


# Attachment-4 Proposed Guelph Innovation District Secondary Plan Land Use Designations and Proposed Official Plan Amendment

Figure 1: Proposed Guelph Innovation District Secondary Plan Land Use Schedule



Link to applicant submitted [Proposed Official Plan Amendment](#), included in Planning Rationale Report, prepared by MHBC Planning Limited, dated December 2025.