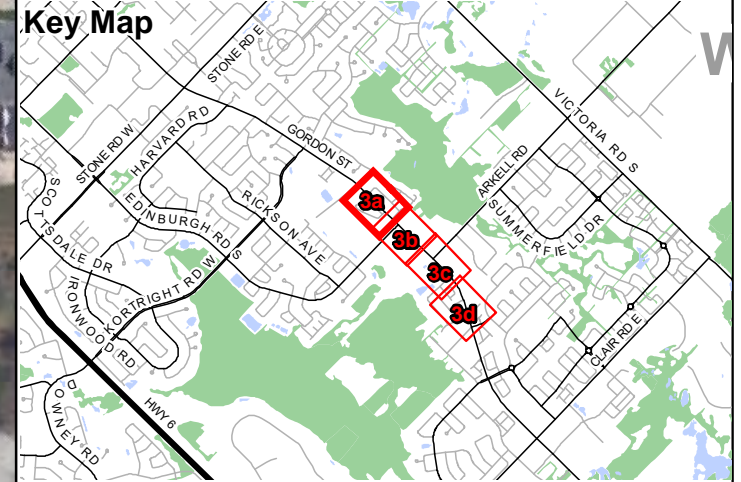


Gordon Street, Guelph EA Natural Environment Constraints and Preliminary Design



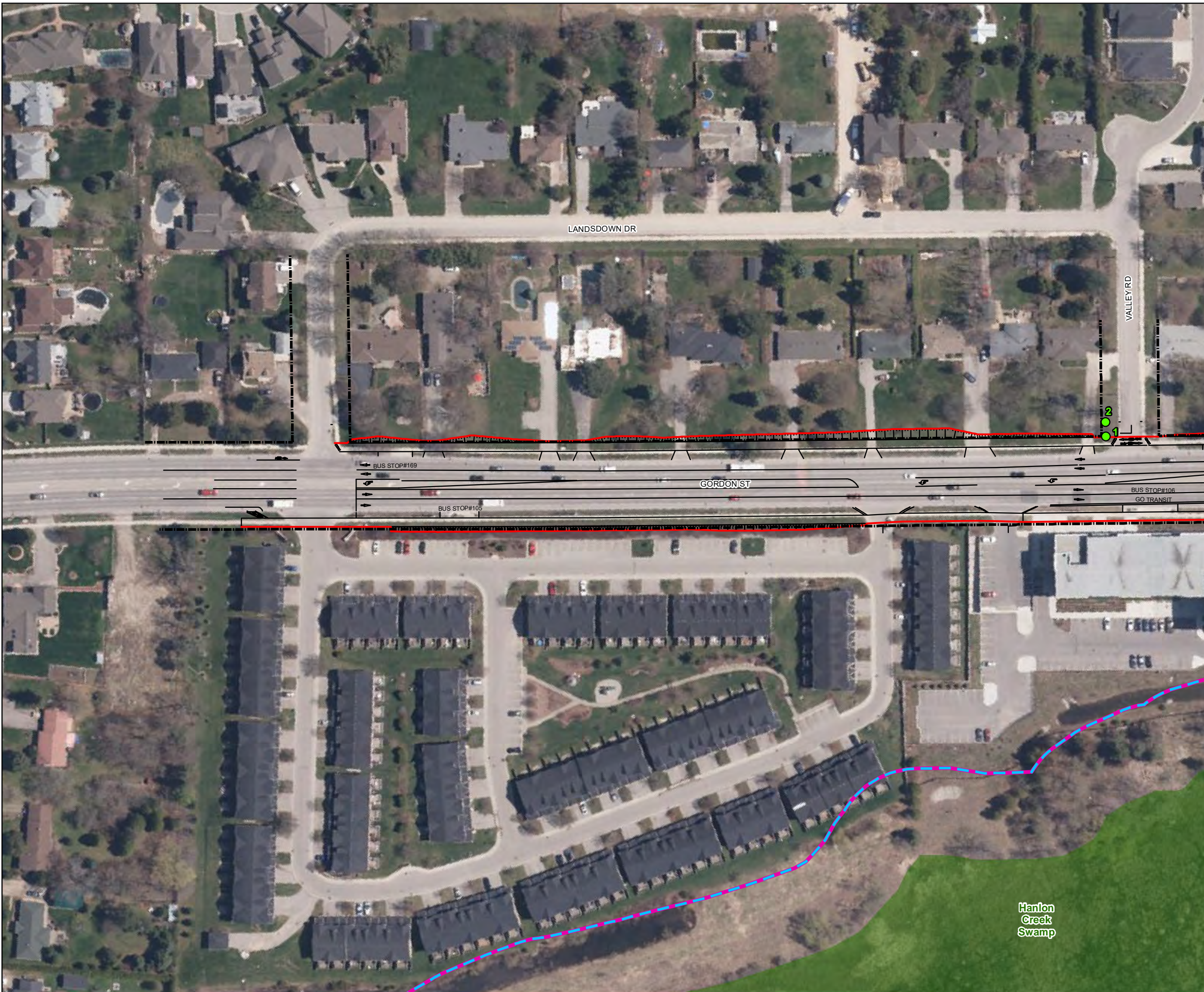
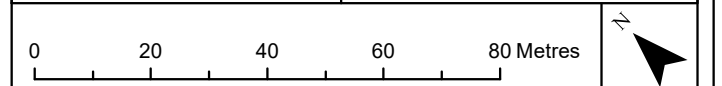
Legend

- Right of Way (ROW)
- Limit of Construction
- Preliminary Design
- Potential Bat SAR Habitat Tree
- Significant Natural Area Boundary
- Surveied Wetland Boundary
- PSW Buffer (30m)
- Provincially Significant Wetland (PSW)
- Deer Winter Congregation SWH
- Significant Woodland
- Significant Woodland Buffer (10m)
- ➔ Deer Crossing
- Ecological Linkage
- Locally Significant Species**
- Sweet Gale (*Myrica gale*)

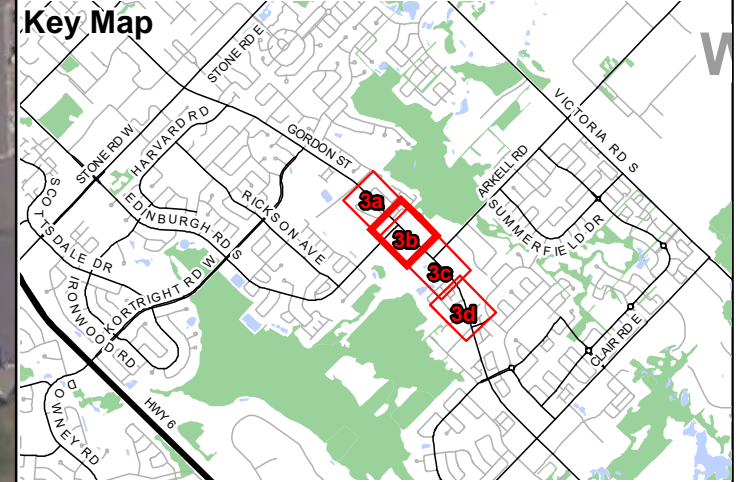


Map Produced by Natural Resource Solutions Inc. This map is proprietary and confidential and must not be duplicated or distributed by any means without express written permission of NRSI. Data provided by MNRFC. Copyright: Queen's Printer Ontario. Imagery: First Base Solutions Inc. (2019).

Project: 2252 Date: July 8, 2020	NAD83 - UTM Zone 17 Size: 11x17" 1:1,300
-------------------------------------	--



Gordon Street, Guelph EA Natural Environment Constraints and Preliminary Design



Legend

- Right of Way (ROW)
- Limit of Construction
- Preliminary Design
- Potential Bat SAR Habitat Tree
- Significant Natural Area Boundary
- Surveyed Wetland Boundary
- PSW Buffer (30m)
- Provincially Significant Wetland (PSW)
- Deer Winter Congregation SWH
- Significant Woodland
- Significant Woodland Buffer (10m)
- Deer Crossing
- Ecological Linkage

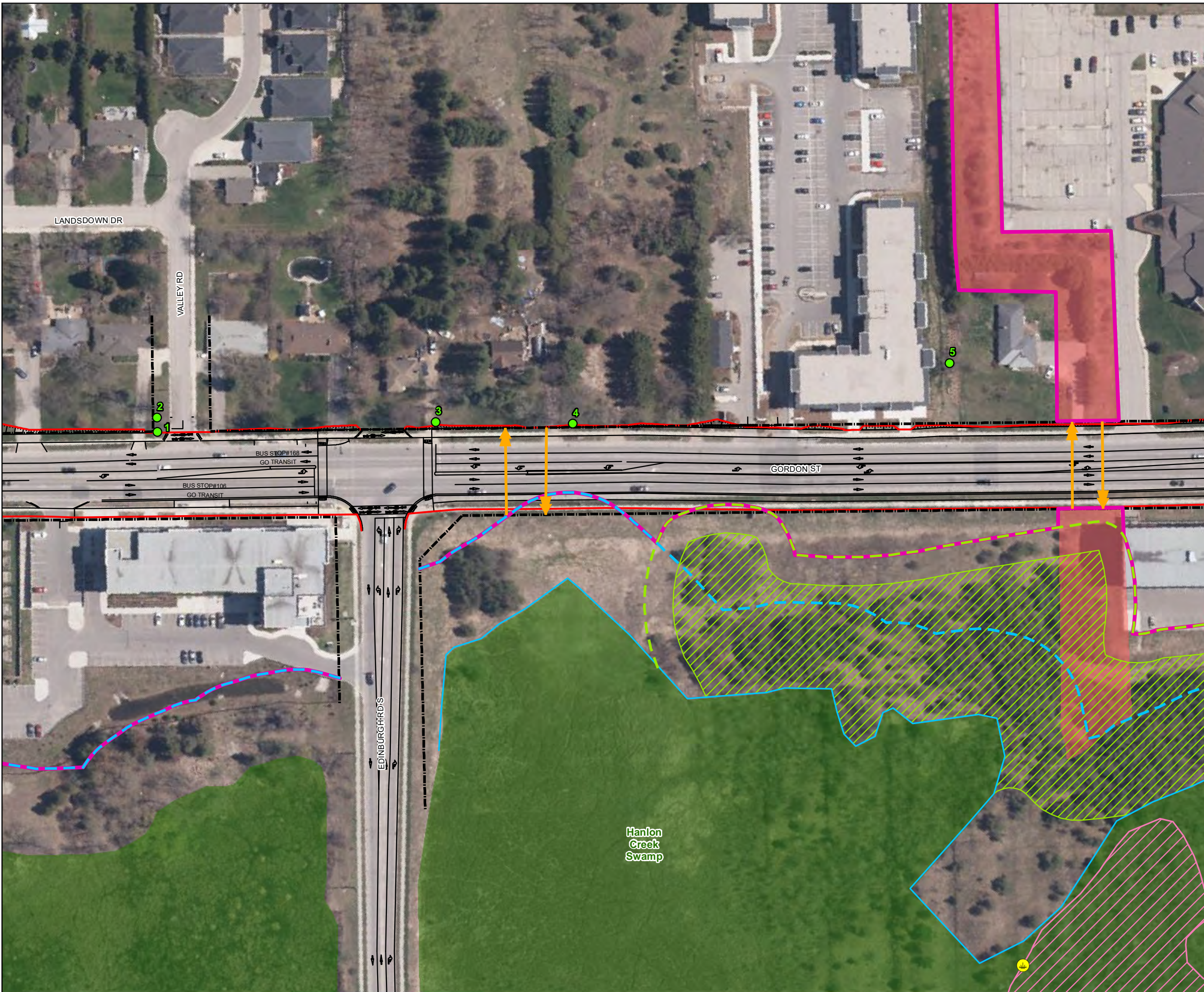
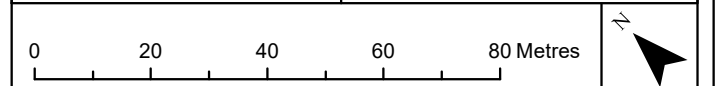
Locally Significant Species

- Sweet Gale (*Myrica gale*)

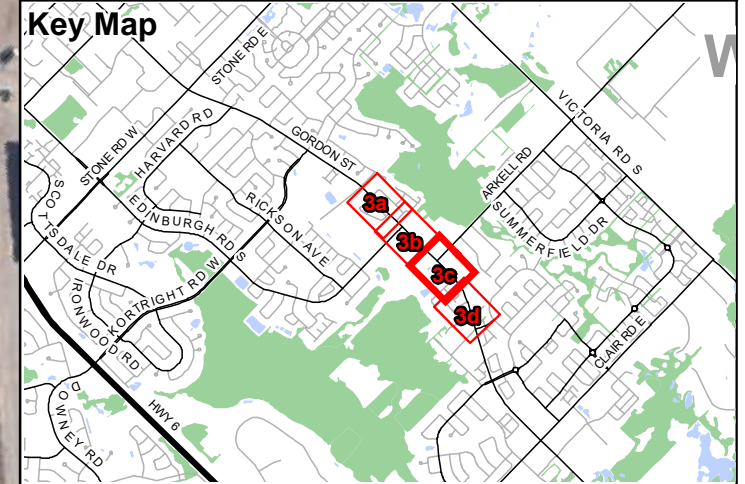


Map Produced by Natural Resource Solutions Inc. This map is proprietary and confidential and must not be duplicated or distributed by any means without express written permission of NRSI. Data provided by MNRF © Copyright: Queen's Printer Ontario. Imagery: First Base Solutions Inc. (2019).

Project: 2252 Date: July 8, 2020	NAD83 - UTM Zone 17 Size: 11x17" 1:1,300
-------------------------------------	--



Gordon Street, Guelph EA Natural Environment Constraints and Preliminary Design



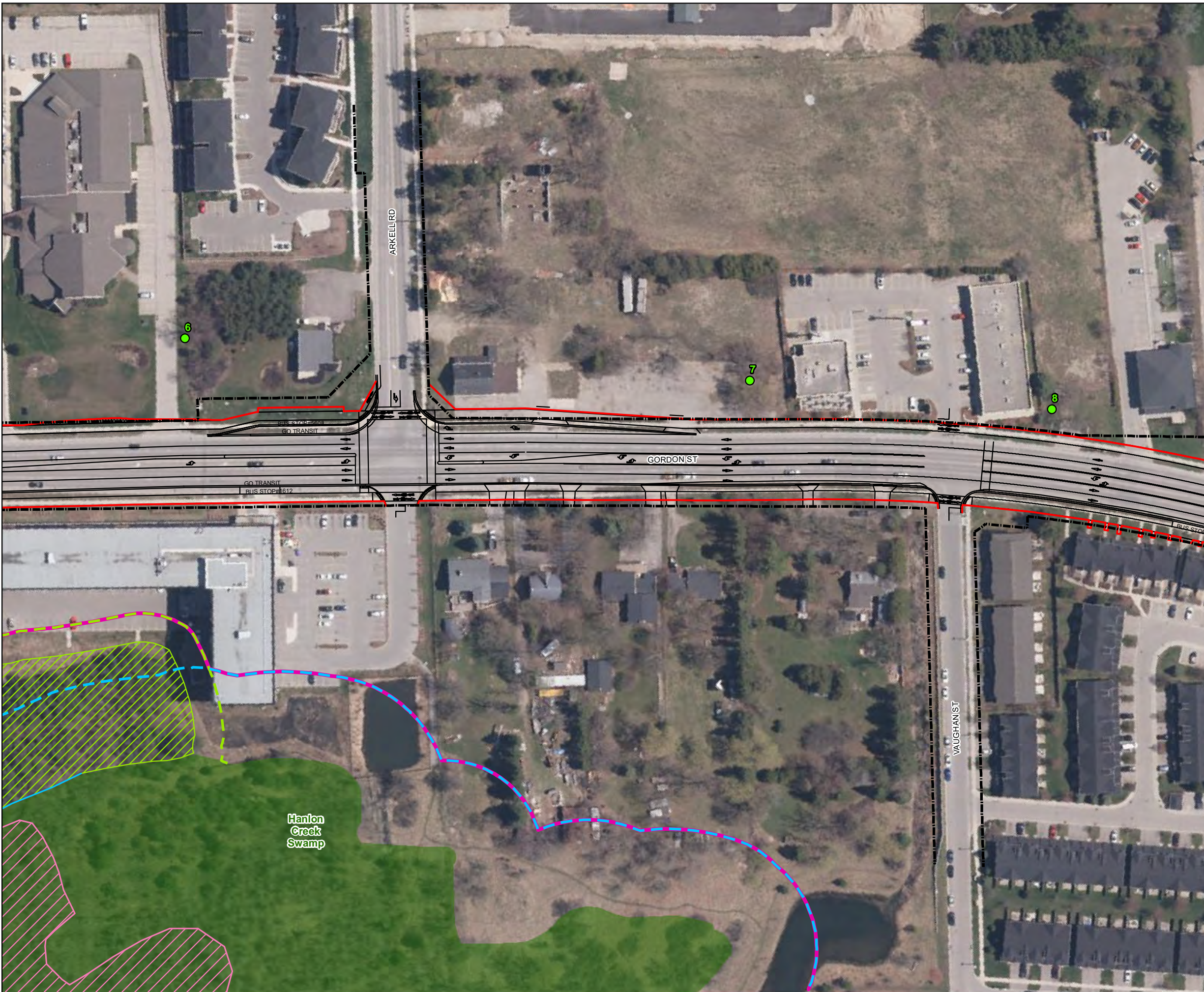
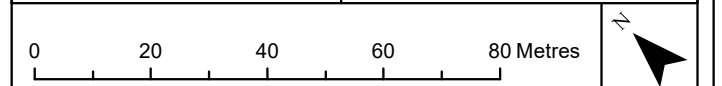
Legend

- Right of Way (ROW)
- Limit of Construction
- Preliminary Design
- Potential Bat SAR Habitat Tree
- Significant Natural Area Boundary
- Surveyed Wetland Boundary
- PSW Buffer (30m)
- Provincially Significant Wetland (PSW)
- Deer Winter Congregation SWH
- Significant Woodland
- Significant Woodland Buffer (10m)
- ➔ Deer Crossing
- Ecological Linkage
- Locally Significant Species**
- 🍷 Sweet Gale (*Myrica gale*)

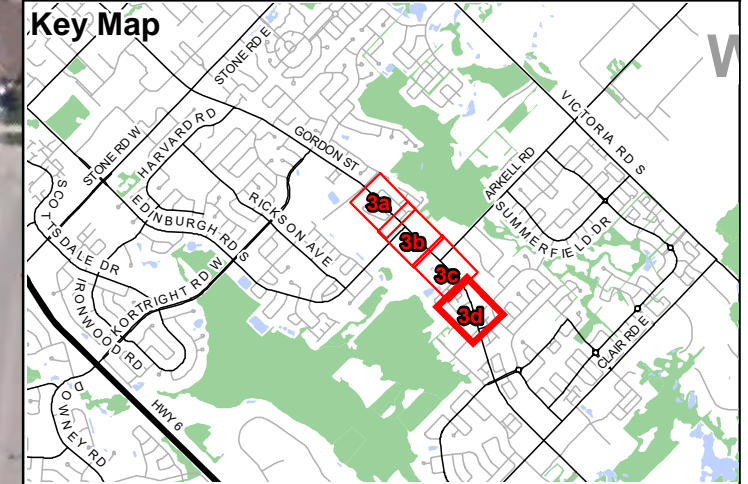


Map Produced by Natural Resource Solutions Inc. This map is proprietary and confidential and must not be duplicated or distributed by any means without express written permission of NRSI. Data provided by MNRFO Copyright: Queen's Printer Ontario. Imagery: First Base Solutions Inc. (2019).

Project: 2252 Date: July 8, 2020	NAD83 - UTM Zone 17 Size: 11x17" 1:1,300
-------------------------------------	--



Map 3d
 Gordon Street, Guelph EA
 Natural Environment Constraints
 and Preliminary Design



Legend

- Right of Way (ROW)
- Limit of Construction
- Preliminary Design
- Potential Bat SAR Habitat Tree
- Significant Natural Area Boundary
- Surveyed Wetland Boundary
- PSW Buffer (30m)
- Provincially Significant Wetland (PSW)
- Deer Winter Congregation SWH
- Significant Woodland
- Significant Woodland Buffer (10m)
- ➔ Deer Crossing
- Ecological Linkage
- Locally Significant Species**
- Sweet Gale (*Myrica gale*)



Map Produced by Natural Resource Solutions Inc. This map is proprietary and confidential and must not be duplicated or distributed by any means without express written permission of NRSI. Data provided by MNRFO Copyright: Queen's Printer Ontario. Imagery: First Base Solutions Inc. (2019).

Project: 2252 Date: July 8, 2020	NAD83 - UTM Zone 17 Size: 11x17" 1:1,300
-------------------------------------	--

