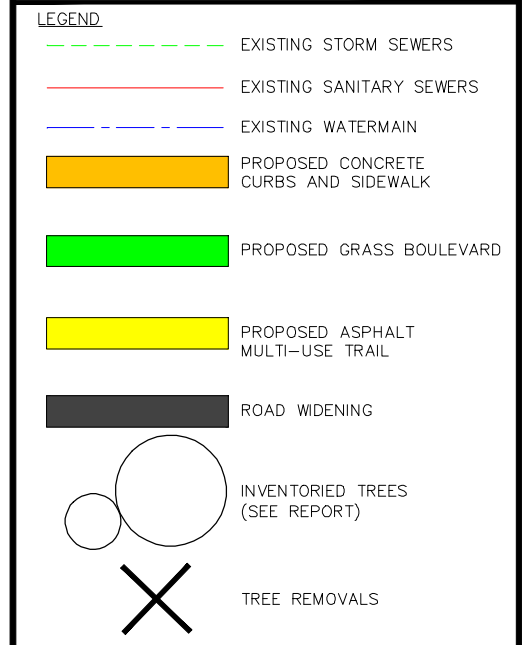


KEY PLAN Scale: NOT TO SCALE



IBI GROUP
 101 - 410 Albert Street
 Waterloo ON N2L 3V3 Canada
 tel 519 585 2255
 ibigroup.com

SCALE NTS
 DATE MAY 10, 2020
 PROJECT No. 117734



GORDON STREET "SCHEDULE B" CLASS ENVIRONMENTAL ASSESSMENT

"PREFERRED OPTION No. 4"

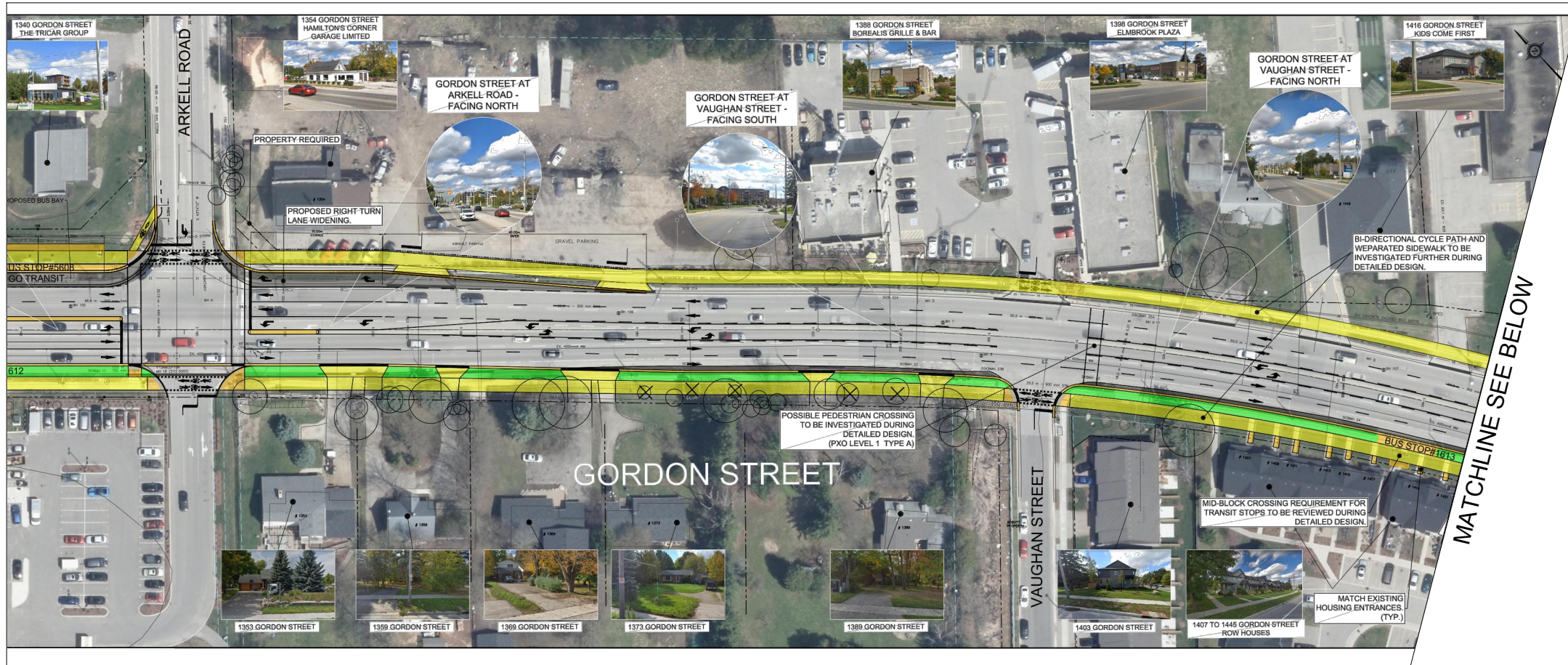
FIGURE 1

MATCHLINE SEE BELOW

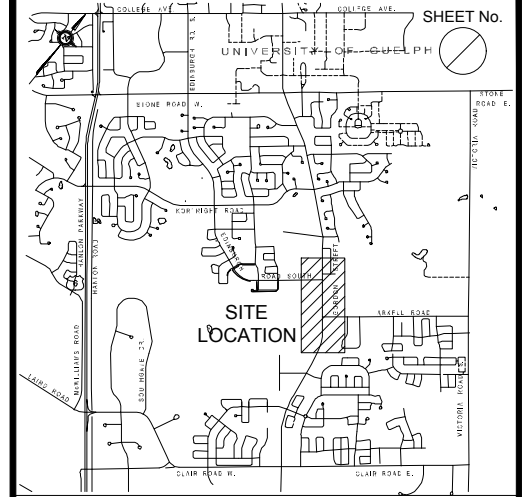
MATCHLINE SEE FIGURE 2

MATCHLINE SEE ABOVE

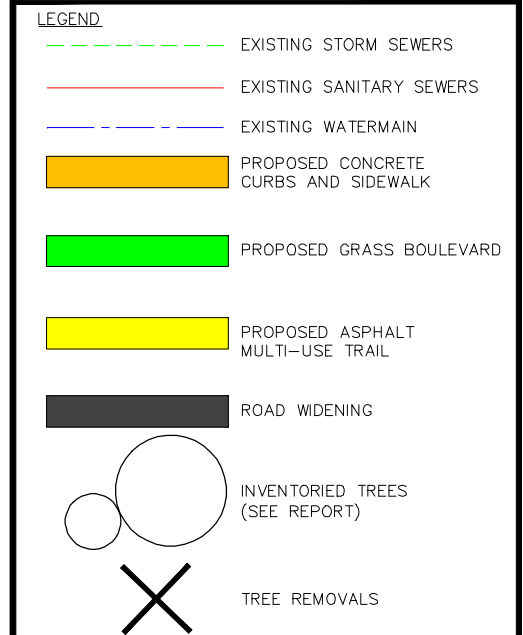
MATCHLINE SEE FIGURE 1



MATCHLINE SEE BELOW



KEY PLAN Scale: NOT TO SCALE



IBI GROUP
 101 - 410 Albert Street
 Waterloo ON N2L 3V3 Canada
 tel 519 585 2255
 ibigroup.com

SCALE NTS
 DATE MAY 10, 2020
 PROJECT No. 117734

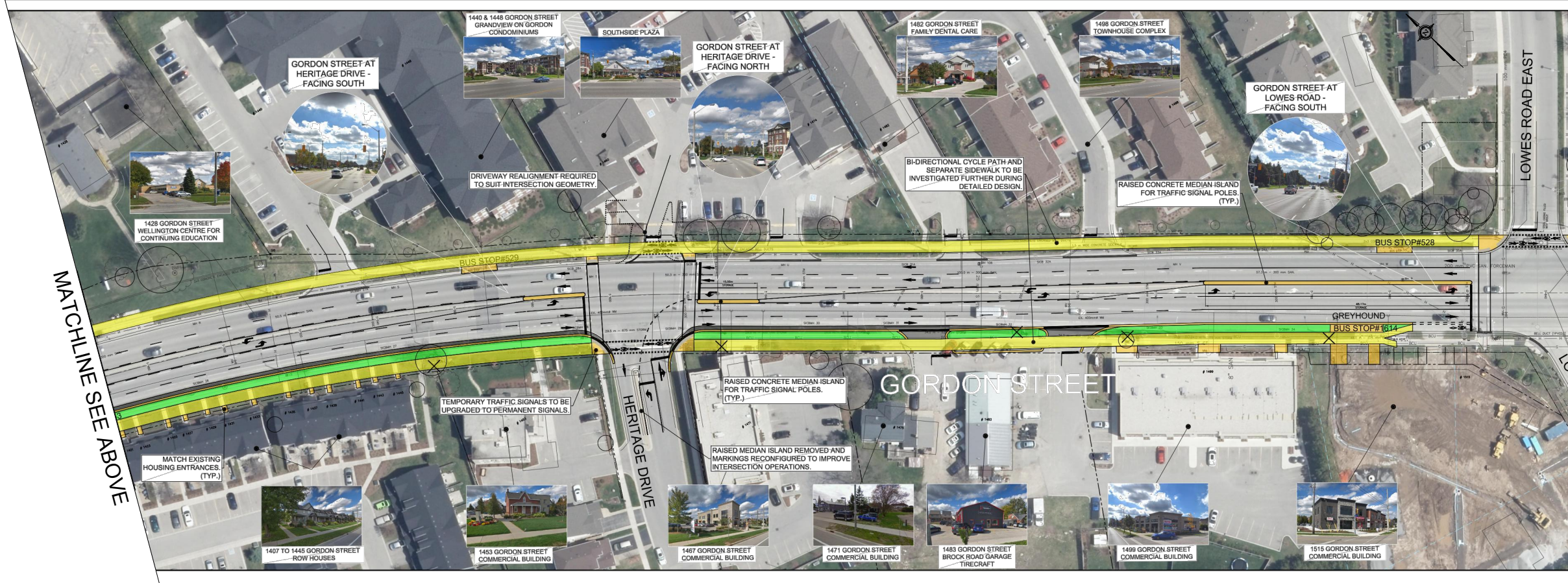


**GORDON STREET
 "SCHEDULE B"
 CLASS ENVIRONMENTAL ASSESSMENT**

"PREFERRED" OPTION No. 4

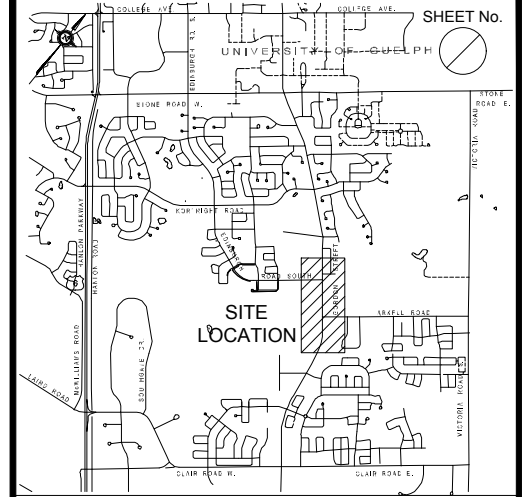
FIGURE 2

MATCHLINE SEE ABOVE

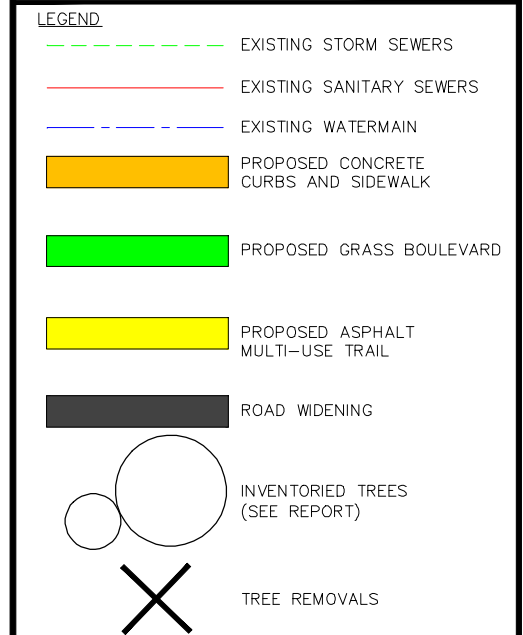


MATCHLINE SEE FIGURE 3

MATCHLINE SEE FIGURE 2



KEY PLAN Scale : NOT TO SCALE



IBI GROUP
 101 - 410 Albert Street
 Waterloo ON N2L 3V3 Canada
 tel 519 585 2255
 ibigroup.com

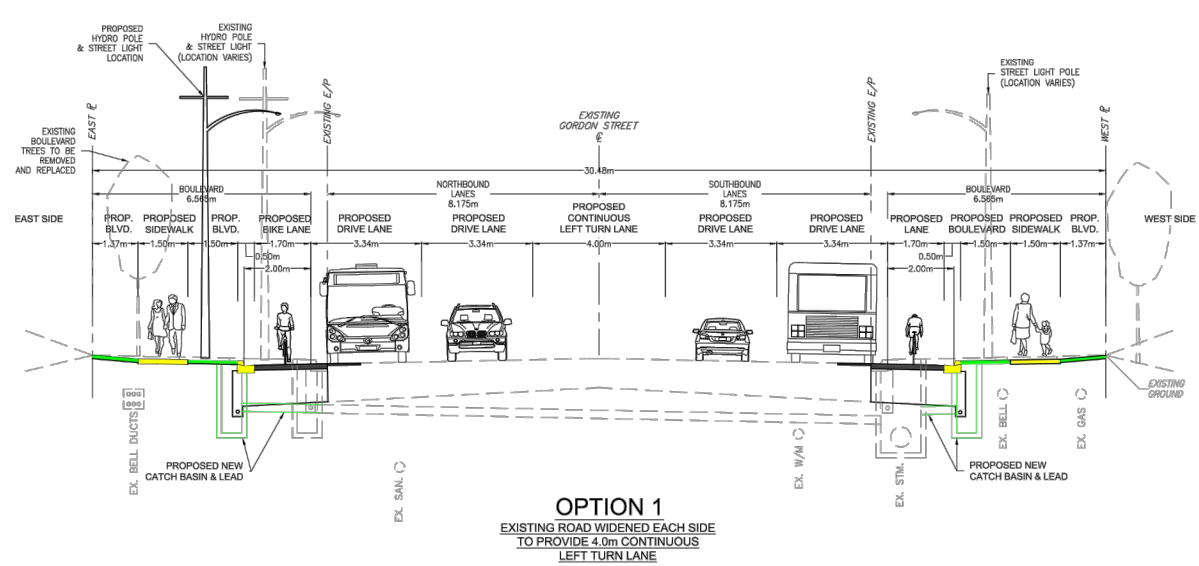
SCALE NTS
 DATE MAY 10, 2020
 PROJECT No. 117734



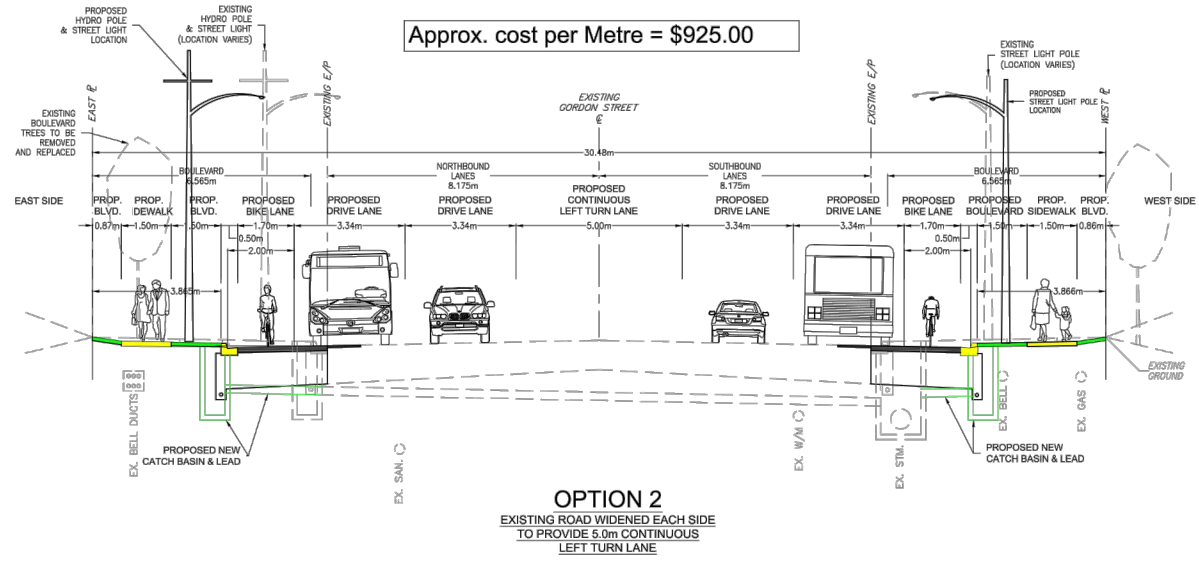
**GORDON STREET
 "SCHEDULE B"
 CLASS ENVIRONMENTAL ASSESSMENT**

"PREFERRED" OPTION No. 4

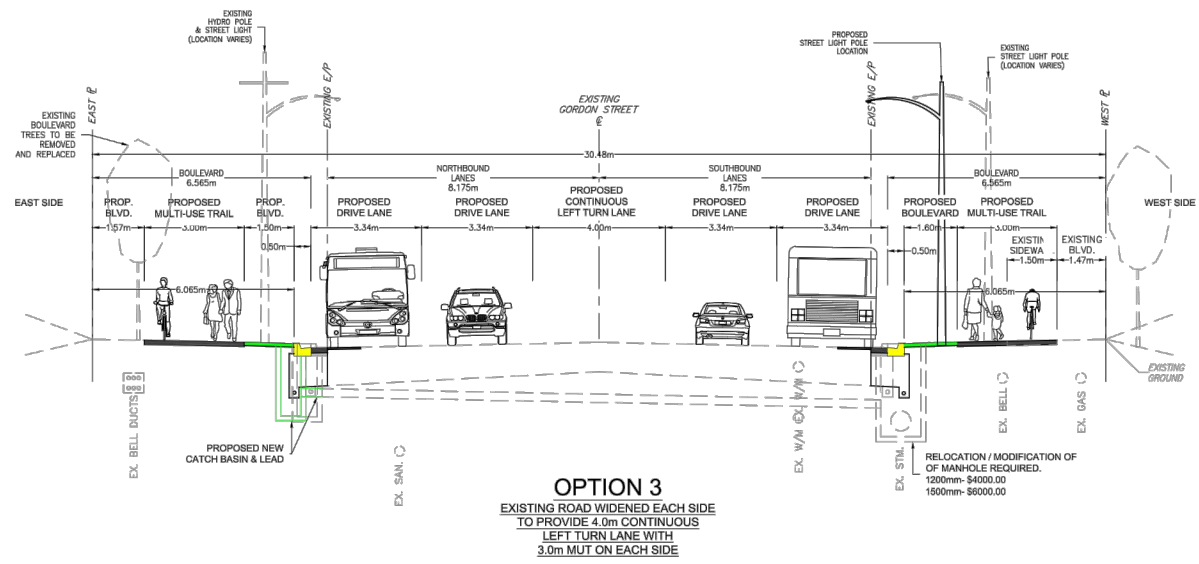
FIGURE 3



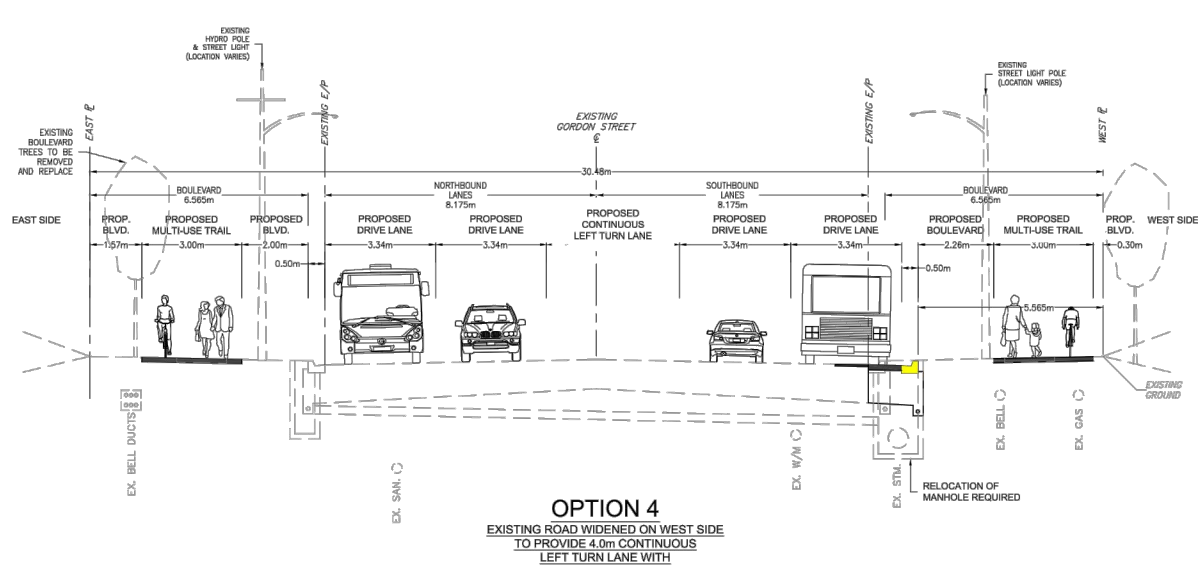
Approx. cost per Metre = \$925.00



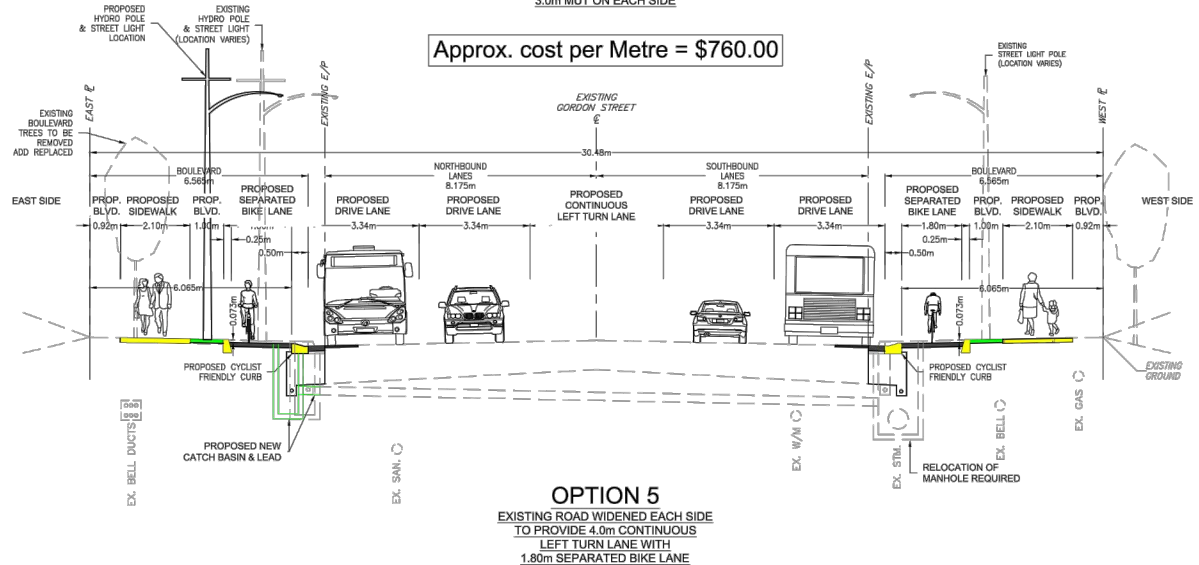
Approx. cost per Metre = \$1,010.00



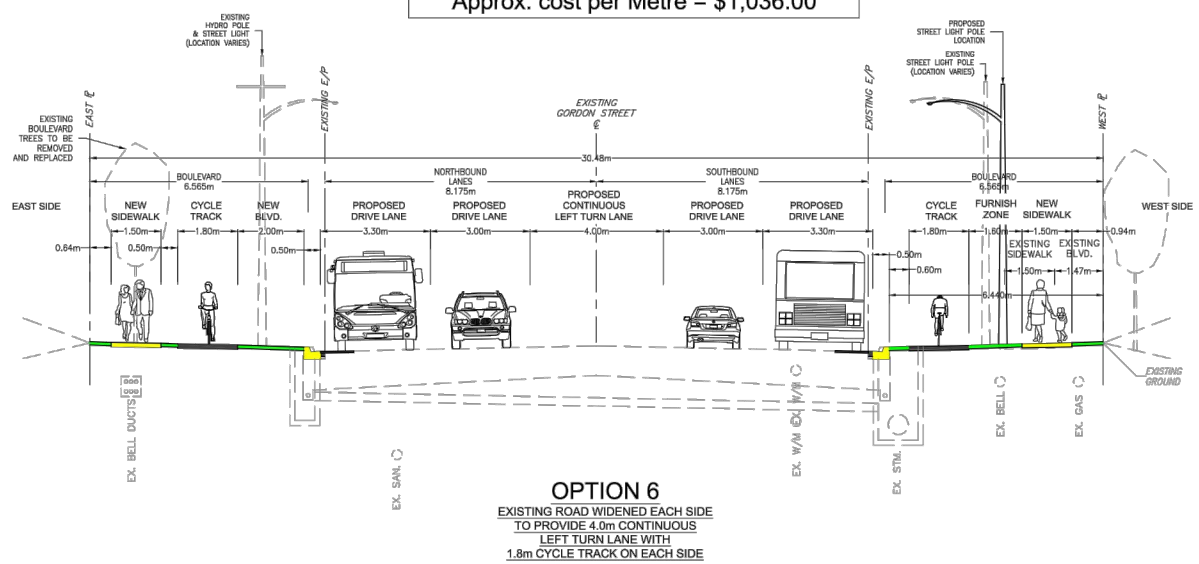
Approx. cost per Metre = \$955.00



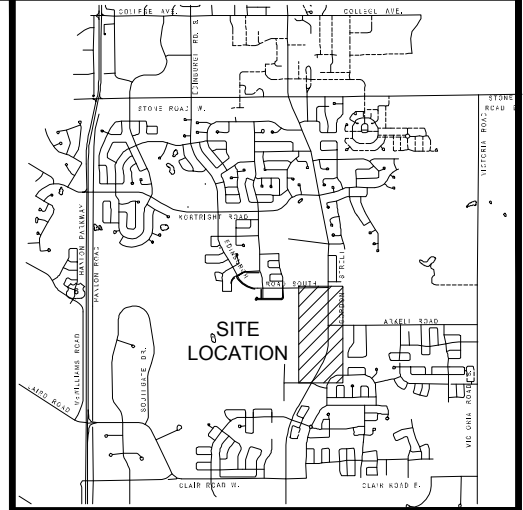
Approx. cost per Metre = \$760.00



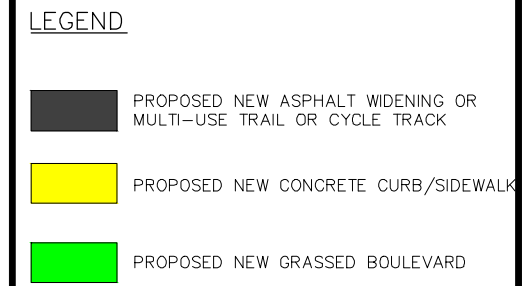
Approx. cost per Metre = \$1,036.00



Approx. cost per Metre = \$797.00



NOTES:
1. ALL EXISTING UTILITIES NOT SHOWN TO BE CONFIRMED DURING THE STUDY PROGRESS.



IBI GROUP
101 - 410 Albert Street
Waterloo ON N2L 3V3 Canada
tel 519 585 2255
ibigroup.com

SCALE: NTS
DATE: MAY 10, 2020
PROJECT No.: 117734



GORDON STREET "SCHEDULE B" CLASS ENVIRONMENTAL ASSESSMENT

TYPICAL SECTION OPTIONS

FIGURE 4