

Emma Street to Earl Street Pedestrian Bridge

Schedule B, Environmental Assessment Results

City of Guelph

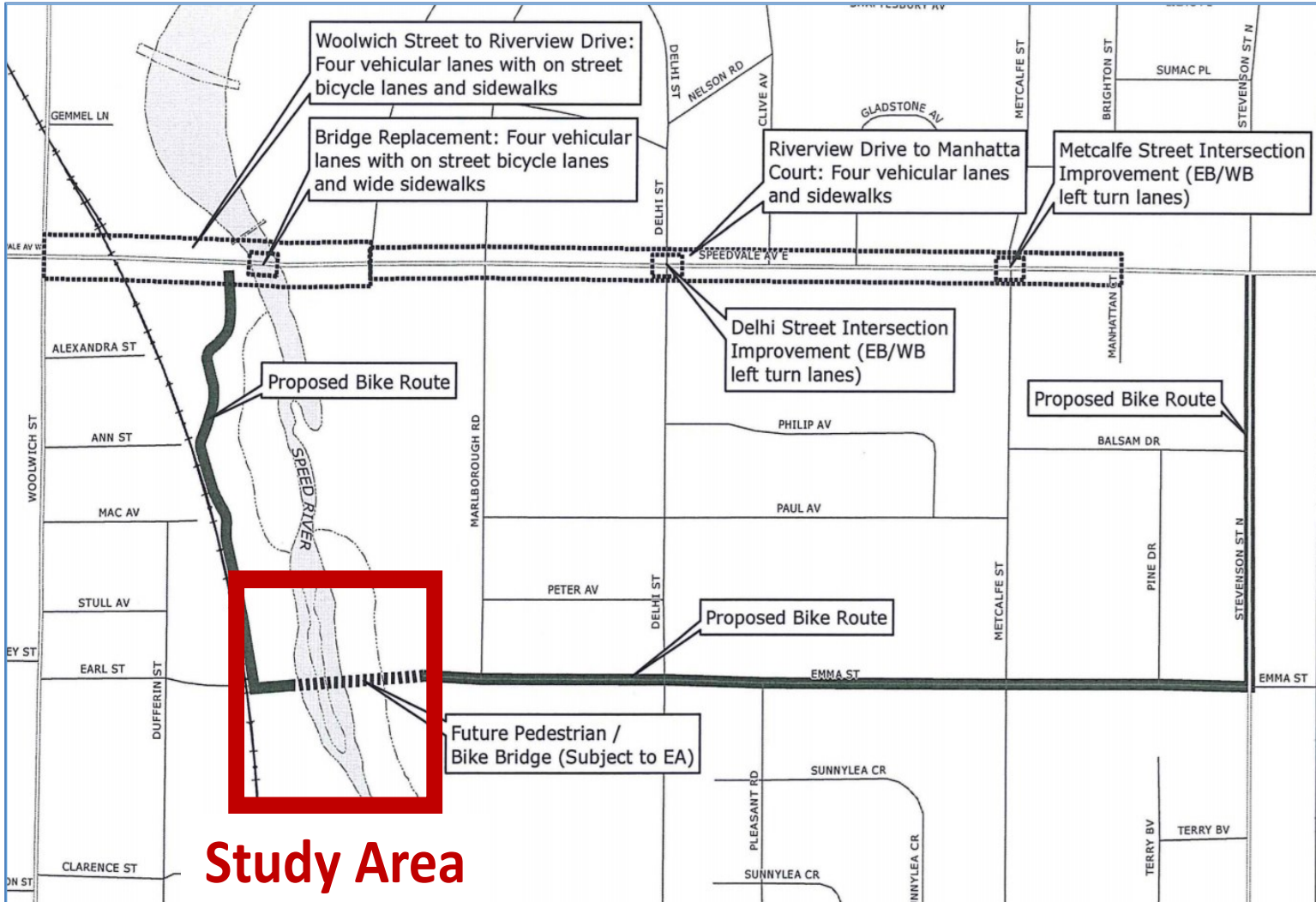
Ken Vanderwal, P.Eng., Manager Technical Services

Leah Lefler, Planner II Environment

Site Location



History



Overview of EA process

- The EA followed Phases 1 and 2 of the planning and design process which involved the following studies:
 - ecological inventories
 - geomorphic assessment
 - hydraulic analysis
 - archaeological assessment
 - hydrogeological review
 - generation and evaluation of alternatives
 - public consultation
 - selection of the preferred solution
- Opportunity statement

“The Emma Street to Earl Street bridge shall ultimately be designed as a pedestrian and cycling bridge, that provides a car free route for cyclists and pedestrians traveling between downtown and the north-east corner of the City of Guelph, with the least impact on the natural environment within the Speedvale River Valley.”
- Evaluation criteria seek to balance needs

Public Consultation

- Public Information Centre #1 was held on October 25th, 2016 to refine the Opportunity Statement.
- Public Information Centre #2 was held on June 7, 2017 to provide feedback on existing conditions, evaluation criteria, preliminary evaluation of alternatives and preferred alternative.
- What we heard
- Public feedback has been incorporated into the preferred alternative

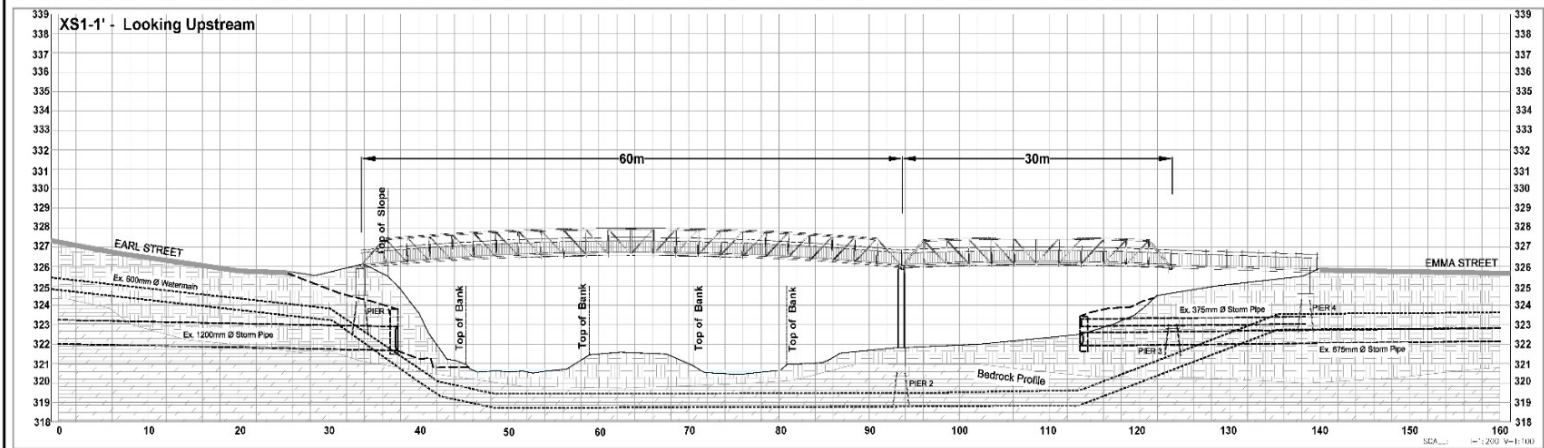
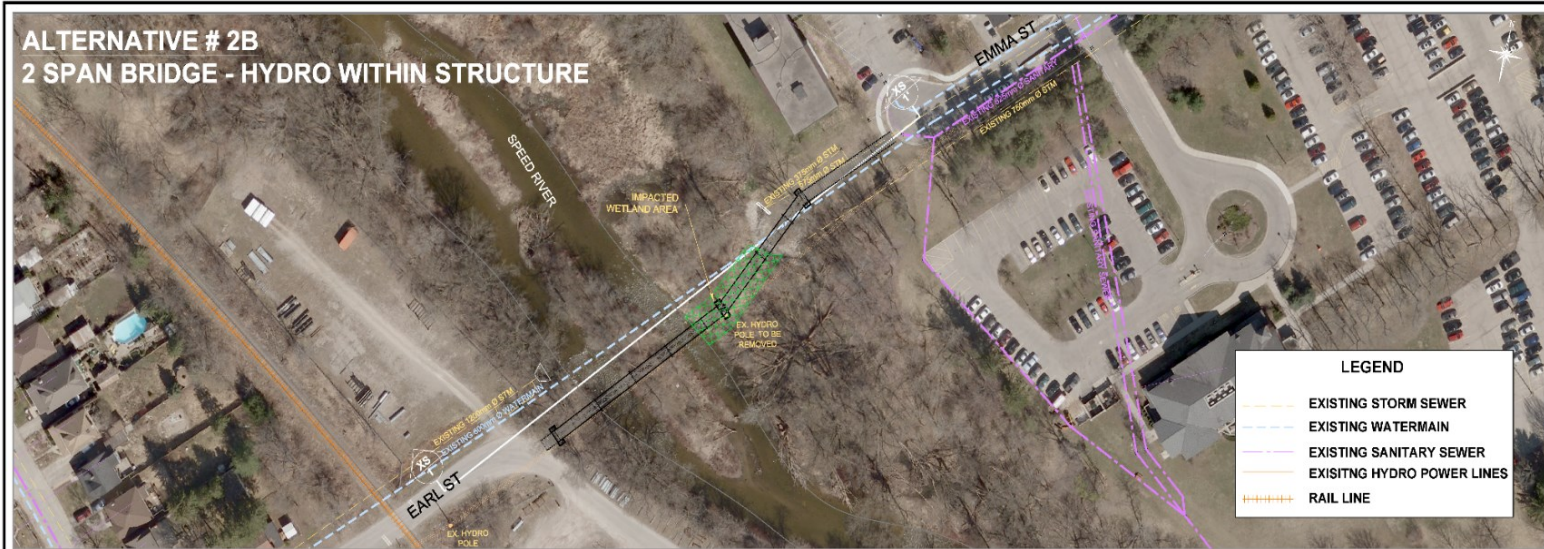
Evaluation of Alternatives

	Null- Do Nothing	Single Span	Double Span Hydro Relocation	Double Span Hydro within Structure	Triple Span
Physical & Natural Criteria	11	10	7	10	3
Hydraulics and Flooding	4	4	2	3	1
Aquatic Habitat	3	3	3	4	1
Terrestrial Habitat	4	3	2	3	1
Social and Cultural Criteria	6	13	12	12	11
Public Safety	0	4	4	4	4
Landowner Impacts	1	2	2	2	2
Benefits to the Community	1	4	4	4	4
Cultural and Archaeological Impacts	4	3	2	2	1
Technical and Engineering Criteria	10	11	10	10	7
Impact on Existing Infrastructure (local)	4	4	3	3	1
Impact on Existing Infrastructure (external)	0	4	4	4	4
Lifespan of Works	4	3	3	3	2
Policy Conformity	2	0	0	0	0
Economic Criteria	8	2	5	5	5
Capital Costs	4	1	2	2	3
Operations and Maintenance Costs	4	1	3	3	2
Cumulative Score	35	36	34	37	26
Rank	3	2	4	1	5

Environmental Considerations



Preferred Alternative 2B



					EMMA STREET @ EARL STREET PEDESTRIAN BRIDGE				
					Plan and Section				
MANAGER	1/23/2017	ISSUED FOR		DESIGN	DM	CONTRACT No.			
OPERATIONAL DESIGN	DATE	REVISIONS	NOTAL SIGNED	SCALE	Plan - horizontal @ 1:500	DRAWING	NO.	DATE	23/03/2017

Strategic Plan Alignment

- The Emma Street to Earl Street pedestrian bridge will align with the following strategic plan priorities:
 - **Sustaining our Future:** Protecting and enhancing the green infrastructure provided by woodlands, wetlands, watercourses and other elements of Guelph's natural heritage system.
 - **Navigating Our Future:** Improving connections to workplaces in Guelph, investing in and promoting active transportation.
 - **Building Our Future:** Continuing working to develop new assets that respond to Guelph's growing and changing social, economic and environmental needs.