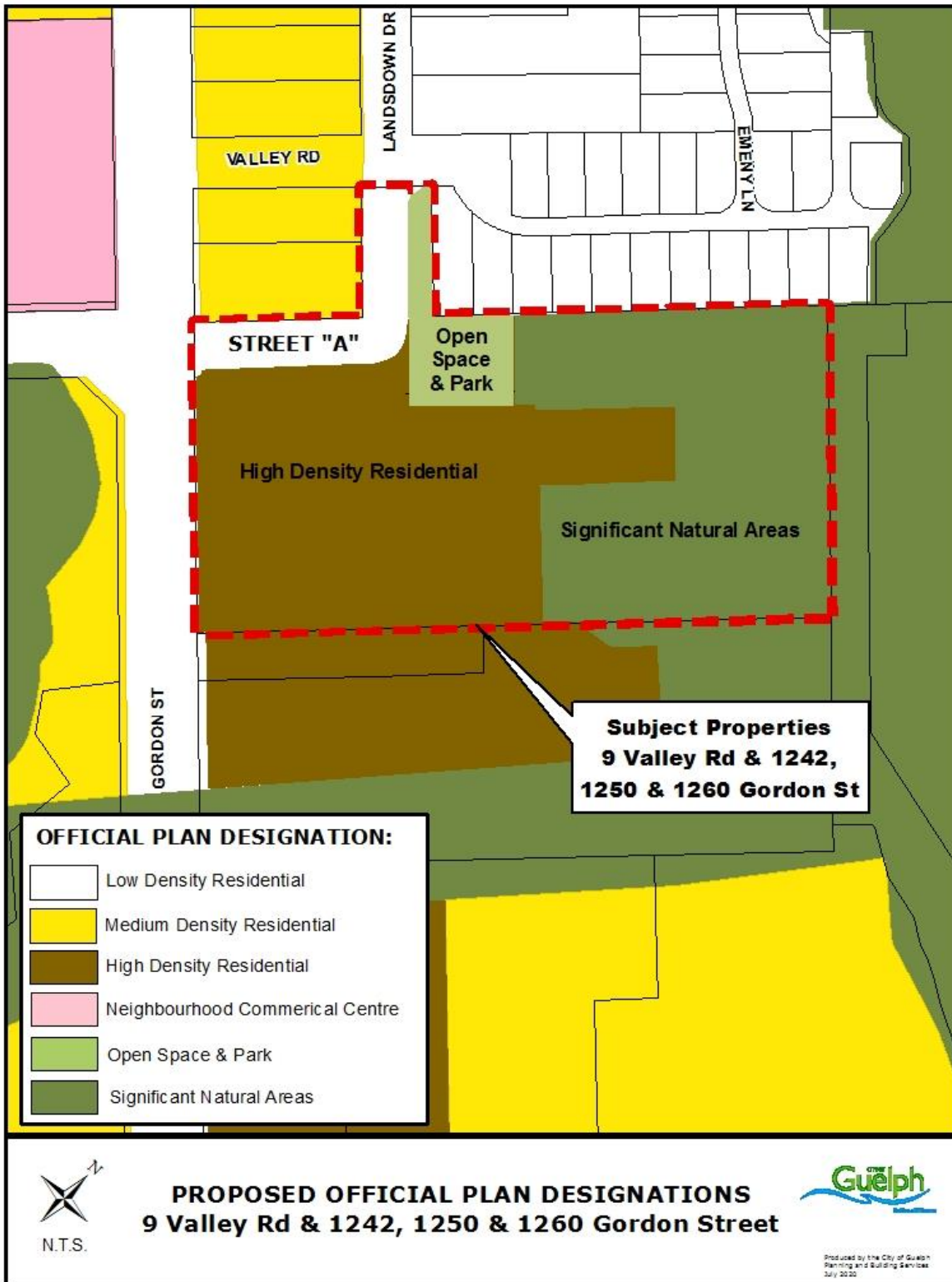


Attachment 4 – Proposed Official Plan Land Use Designations and Policies



Proposed Official Plan Land Use Designations and Policies (continued)

Proposed site-specific policy to be added to the “High Density Residential” land use designation:

Notwithstanding the maximum net density and maximum height in the “High Density Residential” land use designation, the maximum net density shall be 271 units per hectare and a maximum of 12 storeys shall be permitted on the subject lands.

Proposed “Open Space and Parks”

9.7 Open Space and Parks

Open space and parks provide health, environmental, aesthetic and economic benefits that are important elements for a good quality of life. Lands designated Open Space and Parks are public or private areas where the predominant use or function is active or passive recreational activities, conservation management and other open space uses.

Objectives

- a) To develop a balanced distribution of open space, active and passive parkland and recreation facilities that meet the needs of all residents and are conveniently located, accessible and safe.
- b) To co-operate and partner with other public, quasi-public and private organizations in the provision of open space, trails and parks to maximize benefits to the community.
- c) To assist in protecting the City’s urban forests, the Natural Heritage System and cultural heritage resources