

Statutory Public Meeting

Proposed Residential Development



IBI Group

Victoria Park Village Inc.

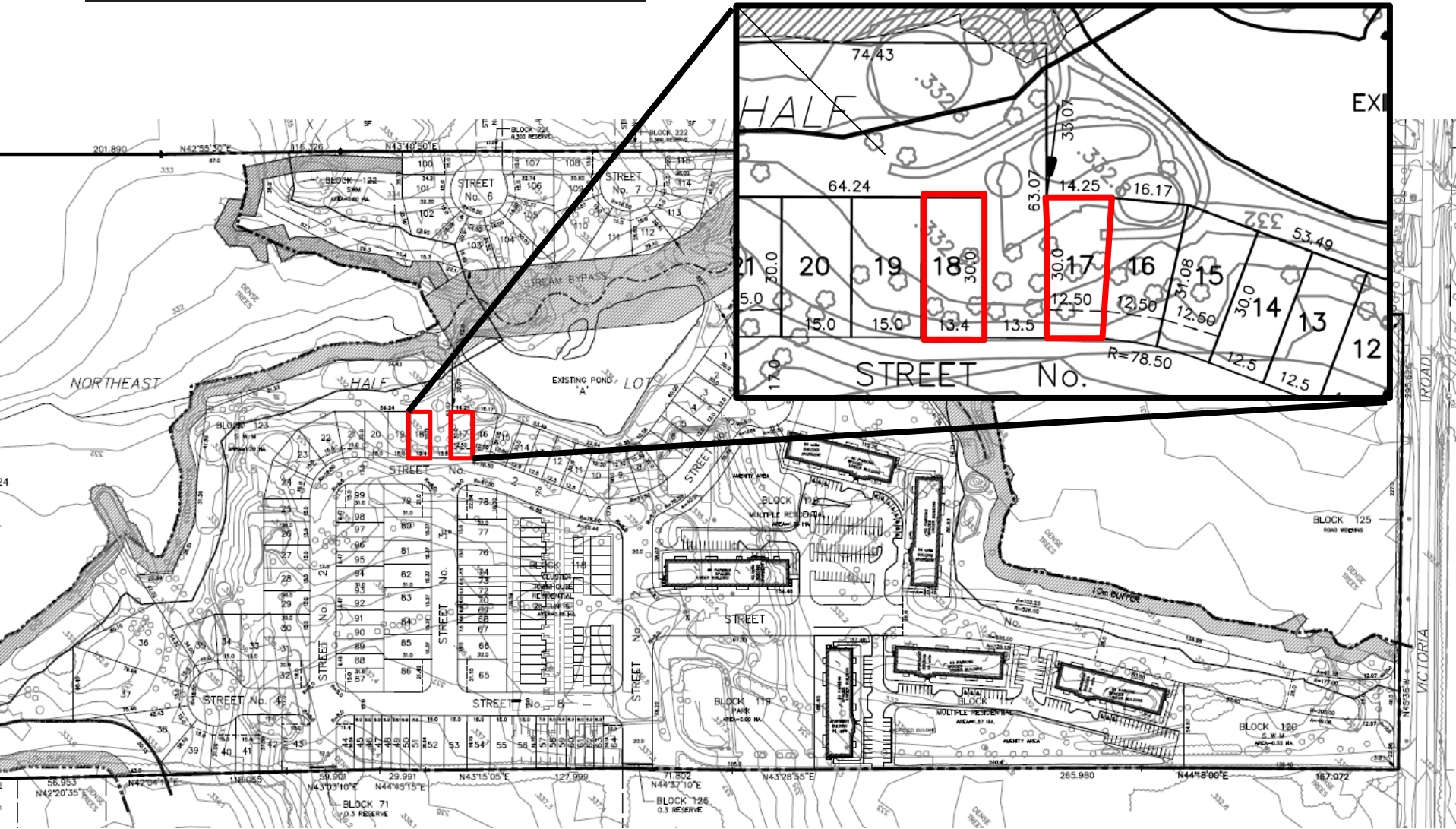
1159 Victoria Road South, Guelph

September 14, 2020



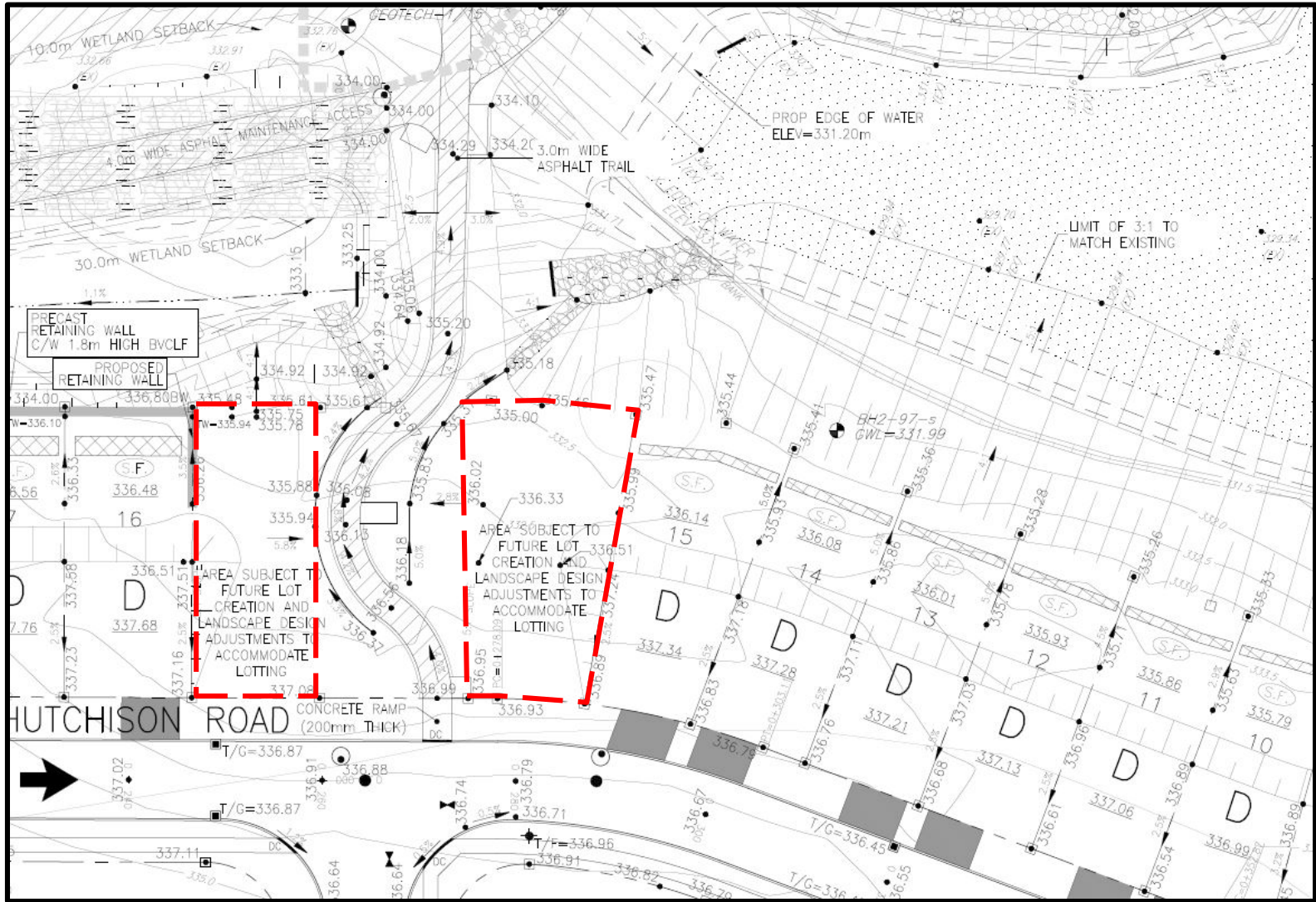
Location Map

STATUTORY PUBLIC MEETING



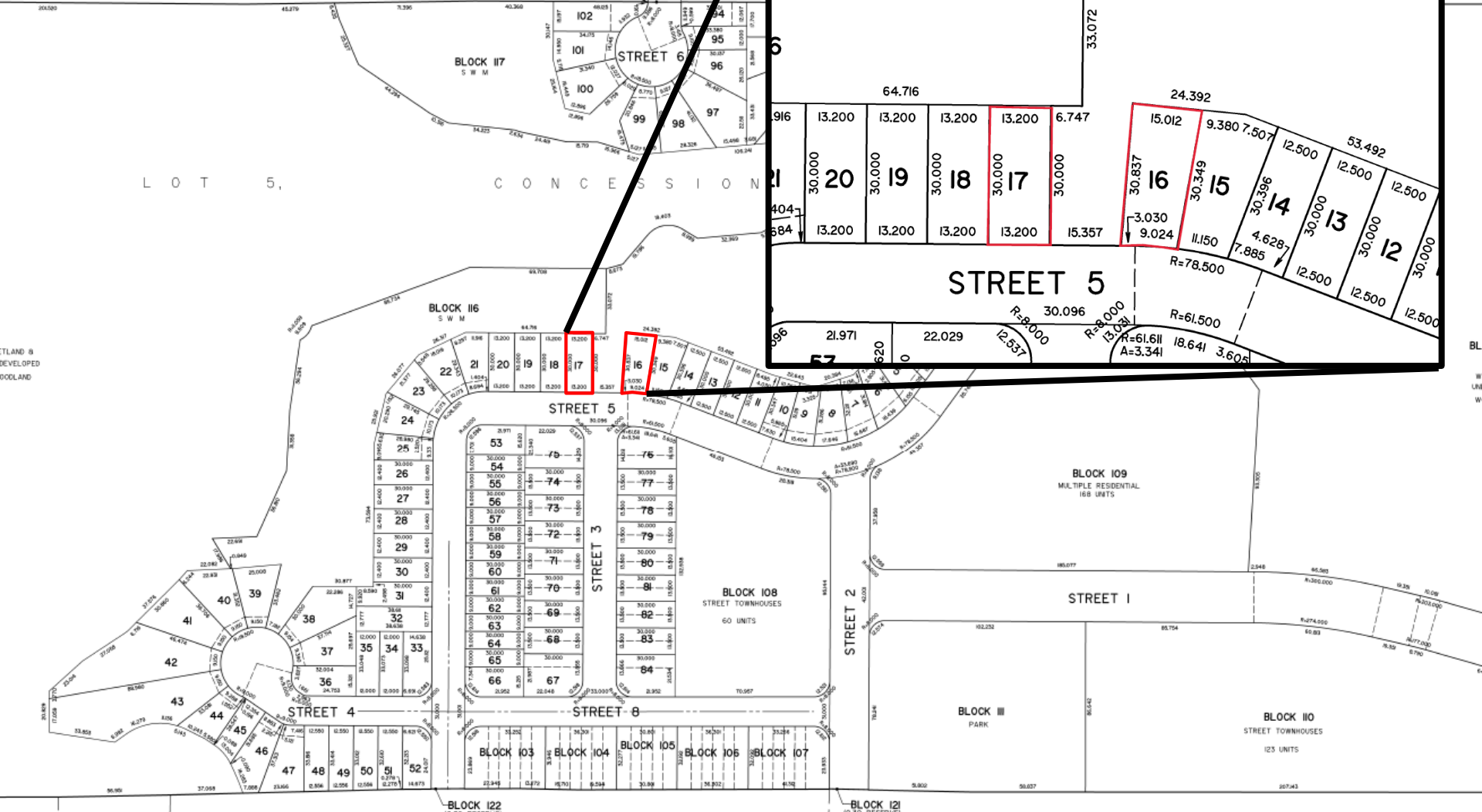
2010 Approved Draft Plan

STATUTORY PUBLIC MEETING



Approved Trail Design

STATUTORY PUBLIC MEETING



Proposed Draft Plan of Subdivision

Conclusion

Proposed 2 lots:

- Will not create adverse environmental impact;
- Minor infilling;
- Re-establishes the lots from 2010 Draft Approved Plan;
- Maintains adequate and safe pedestrian access;
- Adequate servicing capacity to accommodate the lots;
- Maintains “rhythm” of the street

Thank you

