

Sharps Kiosk Locations

Figure 1: Chapel Lane (City owned) – Location of Sharps Kiosk is behind Royal City Church along Chapel Lane.

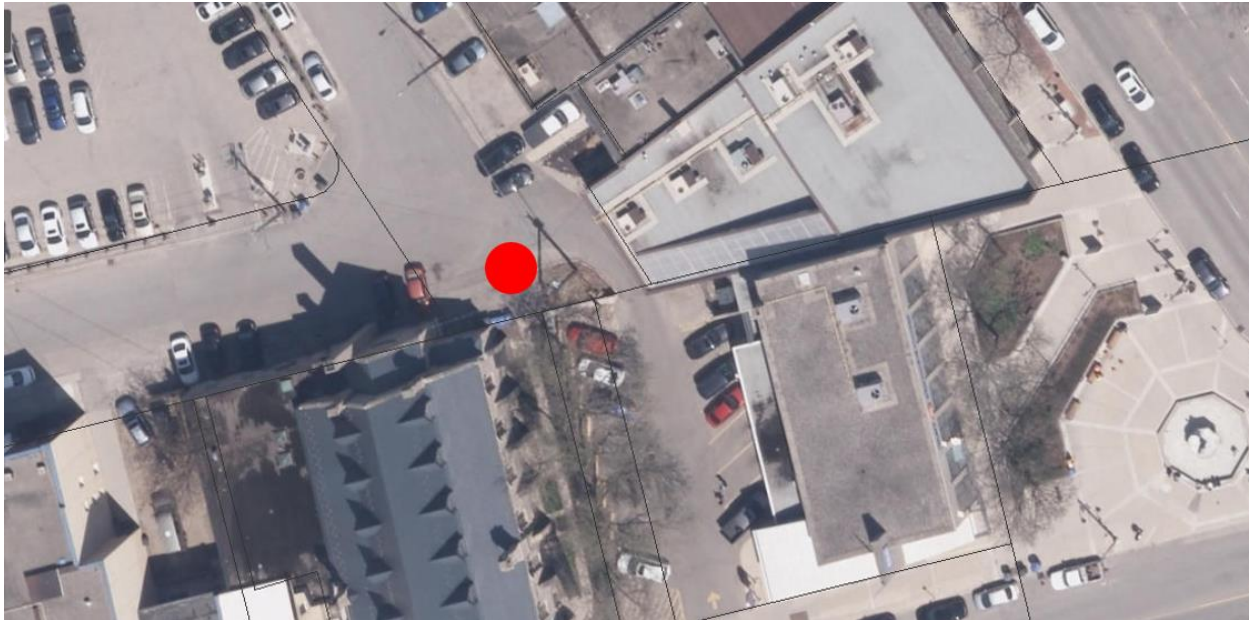
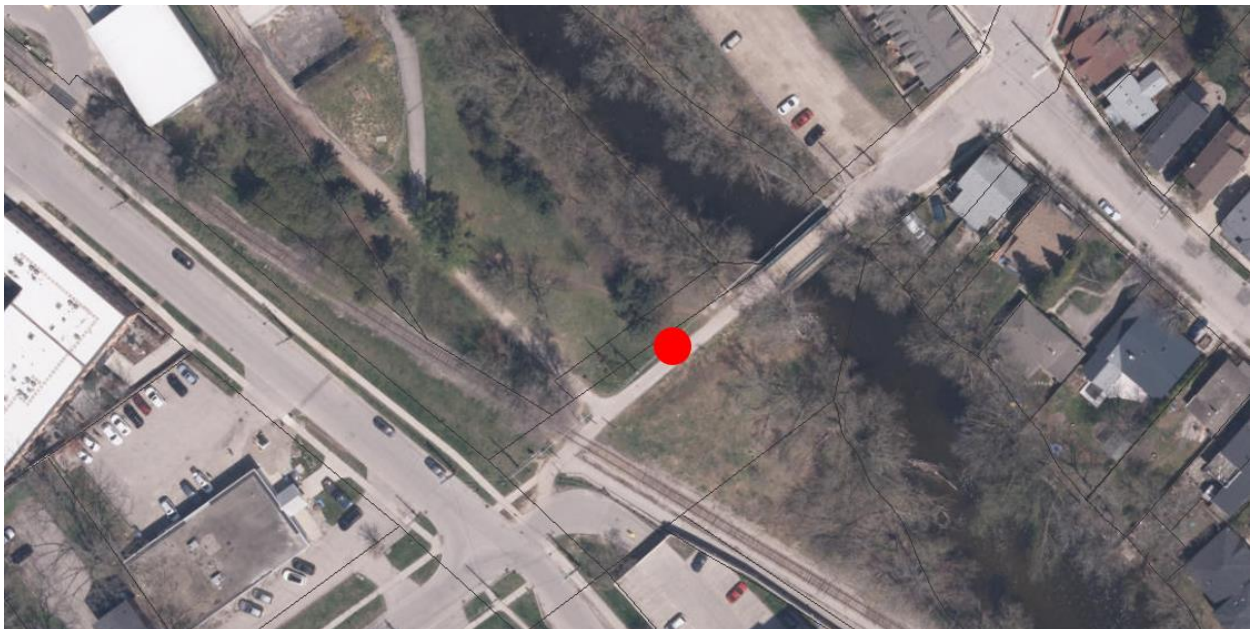


Figure 2: Goldie Mill (City owned) – Location of Sharps Kiosk is along the pathway towards the Norwich St footbridge, on the South side of the Speed River.



Sharps Kiosks – Increasing Access and Community Safety - Attachment 1

Figure 3: Bus Terminal (City owned) – Location of Sharps Kiosk is next to waste bins near the South end of the bus terminal.

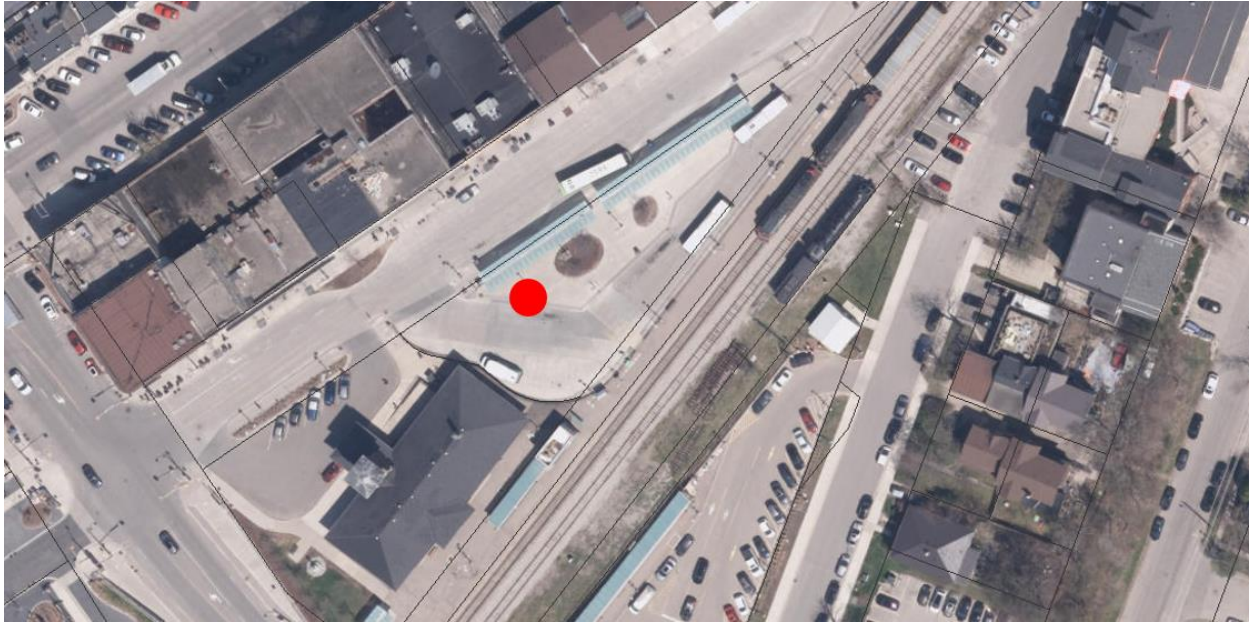


Figure 4: Wellington Plaza (City owned) – Location of Sharps Kiosk is on the river pathway at the North end of the Wellington Plaza.



Sharps Kiosks – Increasing Access and Community Safety - Attachment 1

Figure 5: Royal City Park (City owned) – Location of Sharps Kiosk is on an existing slab of concrete by the baseball diamond in Royal City Park.



Figure 6: River Trail (Guelph Junction Railway owned) – Location of Sharps Kiosk is next to existing waste bins along the river trail by Eramosa Rd.



Sharps Kiosks – Increasing Access and Community Safety - Attachment 1

Figure 7: Marianne's Park (Grand River Conservation Authority owned) – Location of Sharps Kiosk is on the south side of Marianne's Park on existing asphalt.

