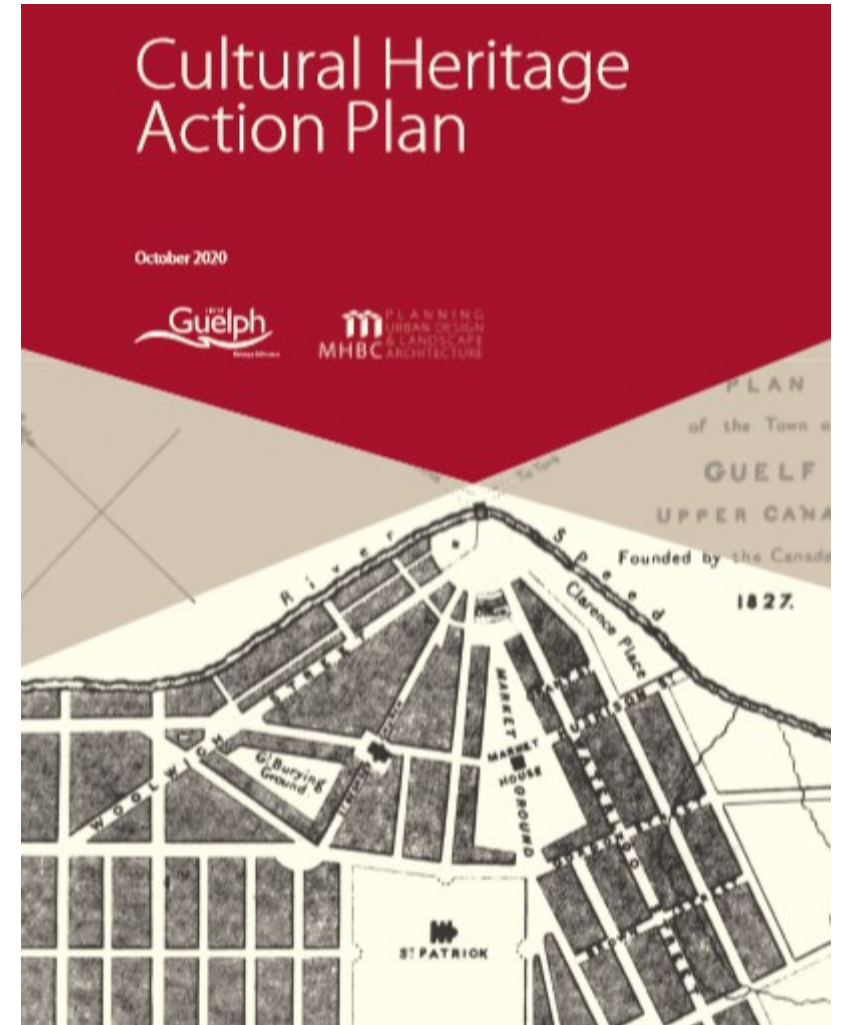
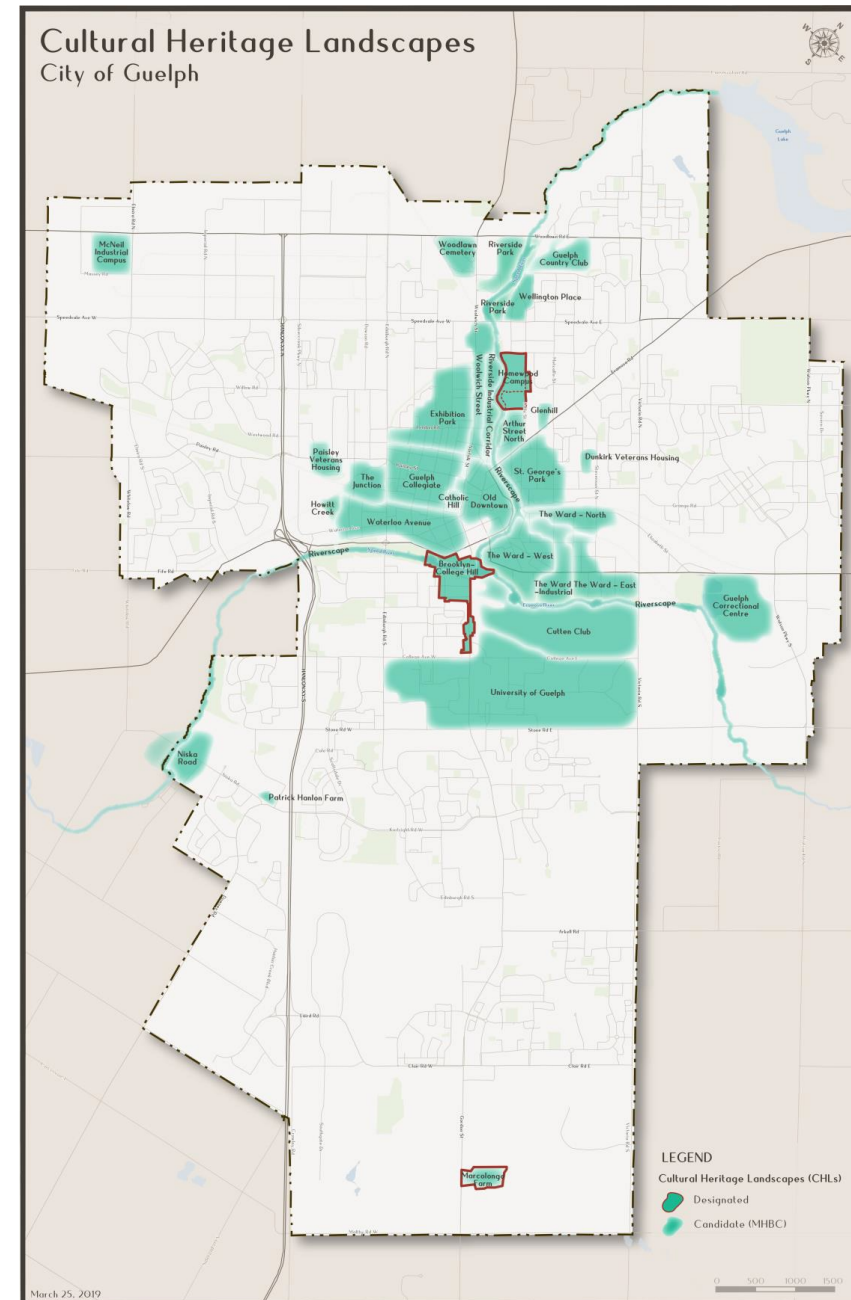


What is the Cultural Heritage Action Plan? (CHAP)

- Implementation of policies in the Official Plan
- Recommends prioritized actions related to conservation of cultural heritage resources
- Identifies candidate cultural heritage landscapes (CHLs) within the city
- Recommends incentives and promotion of cultural heritage resources



Cultural Heritage Landscapes

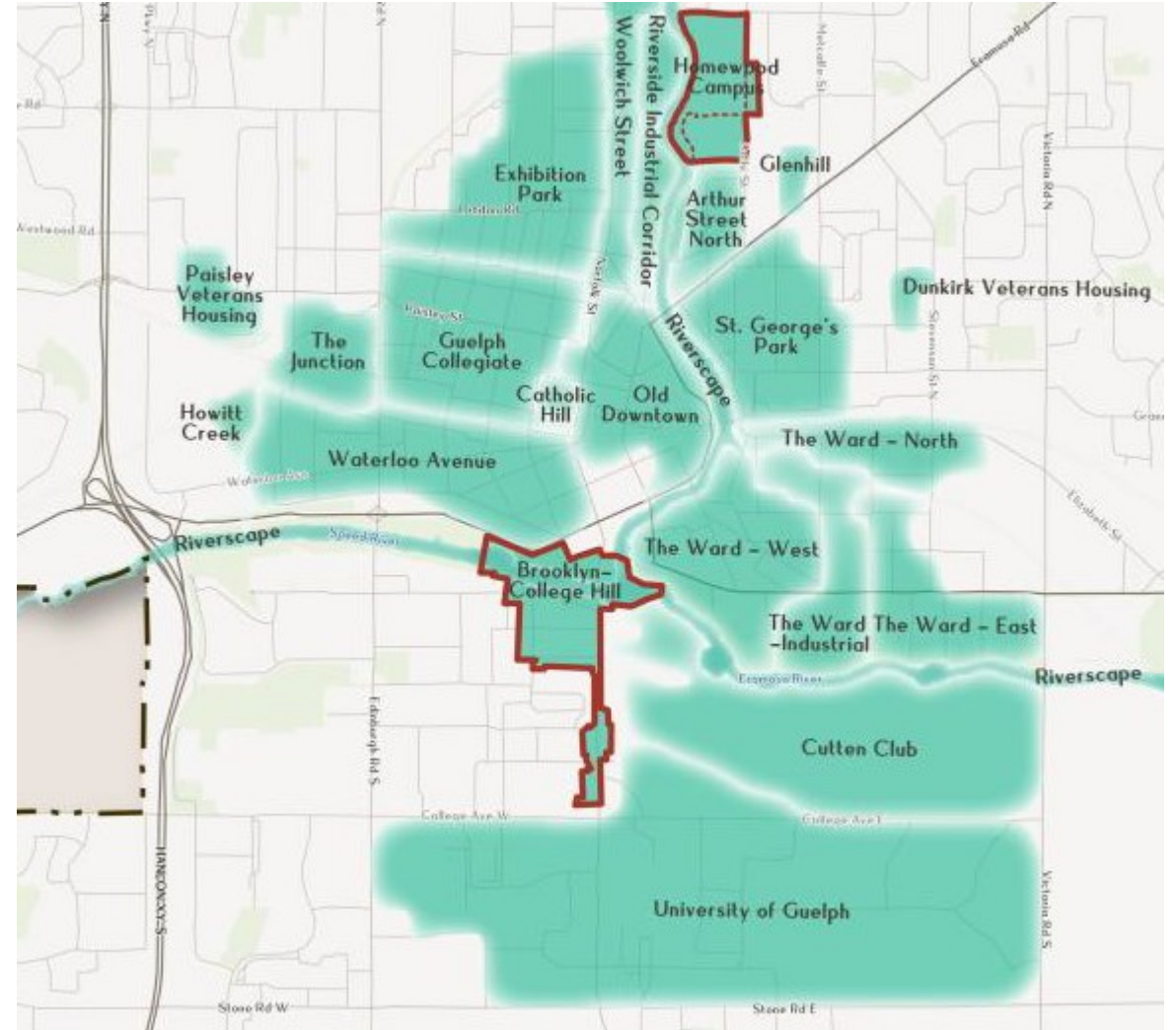


Candidate CHL Areas identified with a 'high' priority

Exhibition Park

St. George's Park

The Ward – West



Financial Incentives

For future consideration by council for commencement in 2025.

Establish a grants program to provide financial assistance to owners of designated properties within Guelph. The program should include a schedule, level of funding, clear eligibility criteria, and monitoring program to review uptake and use of funds.

Recommendation

- That the Cultural Heritage Action Plan be approved; and
- That a heritage conservation district study be initiated for the Ward West candidate cultural heritage landscape (CCHL-23)